

The **complete solution** for all your lighting needs.

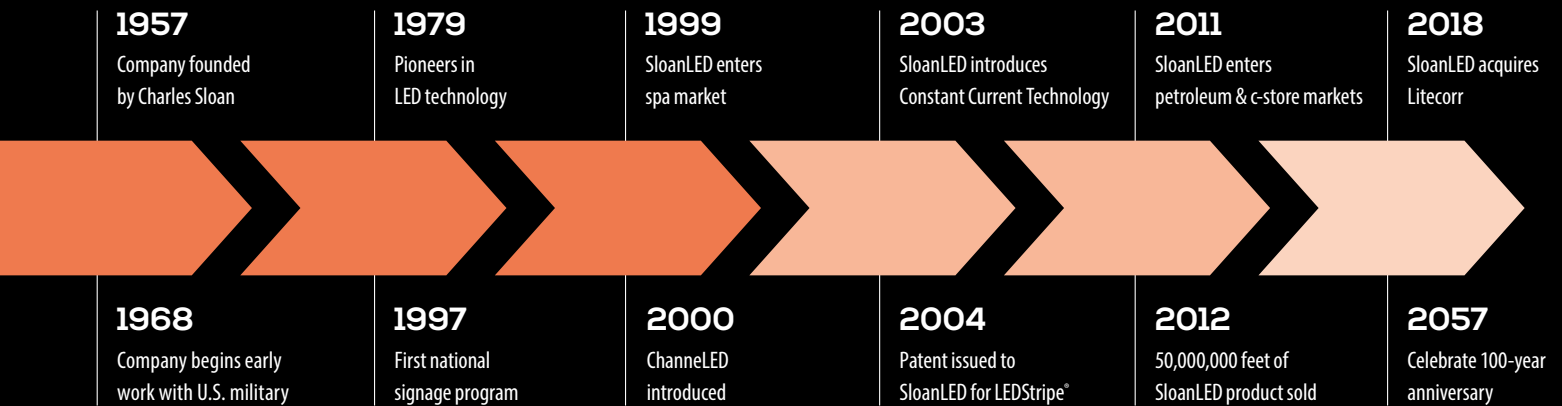
Product Catalog



Brightening Your Brands from the Beginning.

Founded in 1957 to design and develop high-reliability lighting products, SloanLED® quickly became a pioneer in LED technology. Our founder, Charles Sloan, was driven by two simple principles: employ the latest technologies to develop quality lighting products and take excellent care of our customers.

SloanLED has continued to deliver on these principles as a leading supplier of aircraft indicator lights for the last 60 years, and our commitment to producing safe, reliable, lighting solutions that withstand the elements and harshest weather conditions, keeps us at the forefront of the lighting market. Our high-efficiency, long lasting solutions don't just brighten your brands; they represent significant energy cost reductions, maintenance cost savings, easy installation, faster ROI, and deliver exceptional performance with consistent brightness and uniformity.



Innovation

We design, test, and deliver comprehensive solutions that factor in total cost of ownership, maximum ROI, and a positive customer experience.

- Reliable, dependable products
- Lowest total cost of ownership
- Reduced maintenance costs
- Fast, easy installation

Quality

We're a proven industry leader with more than 60 years experience producing safe, reliable lighting solutions.

- ISO 9001:2015 certification for quality management
- Superior product lifespans
- LM79 product testing
- Experienced and proven industry leader

Reliability

We use only the highest caliber components for long lasting lighting solutions that deliver exceptional performance.

- Extreme environmental and product-life testing
- Virtually maintenance free
- Long life products, up to 100,000 hours

Sustainability

Our lighting solutions represent significant energy cost reductions, easy installation, faster ROI, and unsurpassed value.

- Significant energy cost savings
- Recycled/recyclable packaging materials
- Mercury free illumination
- Standardized low-voltage systems

Quick Reference Guide

Border Tubing.....Pg. 4-5

Border tubing and accent LED lighting allows for creative sign solutions. SloanLED offers three LED tubing solutions to fit your application.

Channel LetterPg. 6-10

SloanLED channel letter LED lighting products are designed for a wide range of channel letter applications, including face and halo lit, shallow to deep can depths, and routed acrylic letters.

Product	Desired can depth									12/24 VDC
	1"	2"	3"	4"	5"	6"	7"	8"	9"+	
SloanLED Prism ²⁴ , Prism ²⁴ LP, and Prism	Optimal	Acceptable	Optimal	Optimal	Optimal	Optimal	Optimal	Optimal	Acceptable	12/24 VDC
SloanLED Prism ²⁴ Mini and Prism Mini	Acceptable	Optimal	Optimal	Optimal	Acceptable	Acceptable	Acceptable	Acceptable	Acceptable	12/24 VDC
SloanLED Prism ²⁴ HO	Acceptable	Acceptable	Acceptable	Acceptable	Optimal	Optimal	Optimal	Optimal	Optimal	12/24 VDC
SloanLED Prism Nano	Optimal	Optimal	Optimal	Acceptable	Acceptable	Acceptable	Acceptable	Acceptable	Acceptable	12 VDC
VL4	Acceptable	Acceptable	Optimal	Optimal	Optimal	Acceptable	Acceptable	Acceptable	Acceptable	12 VDC
VL4 Mini	Optimal	Optimal	Acceptable	Acceptable	Acceptable	Acceptable	Acceptable	Acceptable	Acceptable	12 VDC
VL4 HO and VL4 Super HO	Acceptable	Acceptable	Acceptable	Acceptable	Optimal	Optimal	Optimal	Optimal	Optimal	12/24 VDC
BendLUX and SloanLED FlexTAPE	Optimal	Acceptable	Acceptable	Acceptable	Acceptable	Acceptable	Acceptable	Acceptable	Acceptable	12 VDC

Sign Cabinet/Box.....Pg. 11-13

Sign cabinet/box LED lighting from SloanLED is designed for single and double sided and narrow to large box and cloud signs. It's easy to install and is a great solution for new and retrofit applications.

Linear Lighting.....Pg. 14

Linear lighting is a great solution for illuminating cove, awning, and wall wash applications or to highlight non-illuminated signs.

Power SuppliesPg. 15

SloanLED power supplies are engineered to last and are among the most rugged in their class.

Outdoor CommercialPg. 16-20

SloanLED outdoor area LED lighting systems capture customer attention with consistent and bright illumination, in addition to providing sizeable energy savings over non-LED fixtures.

Light Poles & Bracket Mounting Solutions.....Pg. 20

Light pole and bracket mounting solutions.

Indoor Commercial.....Pg. 21-24

SloanLED indoor commercial LED lighting systems use cutting edge LED technology to combine class-leading efficiency, performance, and value to create aesthetically pleasing retail interiors.

Refrigerated DisplayPg. 25-27

SloanLED refrigerated display LED lighting systems use cutting edge LED technology to combine efficiency, performance, and value for state of the art merchandising.

Contractor Essentials.....Pg. 28-33

The SloanLED Contractor Essentials™ program delivers the requirements in-demand by contractors and architects, on-demand —covering the gamut of everyday commercial applications, so your project stays on schedule.

Border Tubing & Accent

Border tubing and accent LED lighting allows for creative sign solutions. SloanLED proudly offers three LED tubing solutions to fit your application. We bring more than 20 years of experience in designing and manufacturing high performance, reliable, long-lasting LED border tube products. Successful brands, who mean business, choose SloanLED.



ColorLINE

Neon-inspired tubing

Add stunning neon-like appeal and increased awareness to any building with this patented LED-based rigid tubing system. Completely assembled and sealed tubes are ready for installation. ColorLINE offers our brightest tubing light output, a neon-like profile, and innovative lit, mitered corners.

- Daytime color when non-illuminated
- Slim profile similar to standard neon
- High impact acrylic: UV stable, hydrocarbon insensitive, and non-fading
- Product can be cut to custom lengths in the field

12
VDC



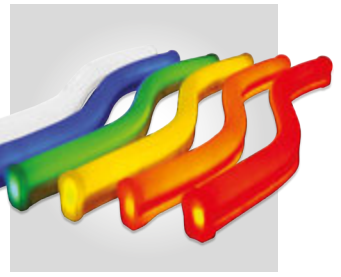
FlexiBRITE

Flexible LED tubing

Add a "neon look" to any LED-lit sign with FlexiBRITE field bendable LED tubing. Easily create an endless array of profiles, contours, and patterns on the fly. Ideal for exterior and interior lighting applications such as sign perimeters, letters, symbols, accent stripes, borders, and open-face channel letters.

- Colors retain hue in the daytime
- Optically modified silicone extrusion: UV stable, hydrocarbon insensitive, and non-fading
- Extremely flexible LED tubing
- Convenient mounting clips and mounting tracks

12
VDC



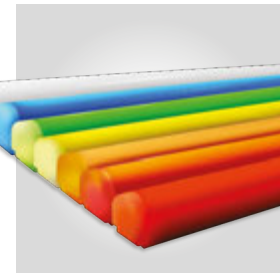
LEDStripe

Large-profile LED tubing

LEDStripe® LED-based rigid tubing system adds elegance and distinction to any building and has become the border tube system of choice for many retail, restaurant, and lodging chains.

- Daytime color when non-illuminated
- High impact acrylic: UV stable, hydrocarbon insensitive, and non-fading
- Product can be cut to custom lengths in the field

24
VDC



SloanLED FlexTAPE

Flexible LED illumination for shallow signs and accents

Low-profile, LED lighting solution that delivers flexibility and fast, easy installation in shallow channel letter and architectural accent applications.

- Available in White (6500 K, 5000 K, 3500 K) and Red
- Easy installation with peel-n-stick back
- Can be cut in 2" (50 mm) segments for zero waste

12
VDC



Colors	Part number*	Lengths	Length code	Approx. cut increments	Power per ft/m	Protection class	Power capacity	Mounting
Red	701800D-R-X	2-ft (0.6-m) Tube	2	2.4 in (60 mm)	2.28 W / 7.5 W	IP66	24 ft (7.3 m) per 60 W 12 VDC power supply	Dual-position mounting clips (400381-25) orient in two directions
Orange	701800D-O-X							
Yellow	701800D-Y-X	4-ft (1.2-m) Tube	4					
Green	701800D-G-X							
Blue	701800D-B-X	6-ft (1.8-m) Tube	6					
White (6500 K)	701800-W-X							
Warm White (3500 K)	701800A-WW-X	8-ft (2.4-m) Tube	8					

FlexiBRITE

Ruby Red	701499-R-X	2-ft (0.6-m)	2	2" (50 mm)	2.8 W / 9.2 W	IP66	20 ft (6 m) per 60 W 12 VDC power supply	Mounting clips: (701572-25) Mounting track: (701456-10)
Citrus Orange	701499C-O-X							
Noviol Gold	701499C-Y-X	10-ft (3.0-m)	10	1.5" (38 mm)				
Emerald Green	701499D-G-X							
Bromo Blue	701499D-B-X							
Snow White	701499D-W-X							

LEDStripe

Red	701189-XH	1-ft (0.3-m) Tube†	1	3 in (75 mm)	1.5 W / 5.0 W (except 1-ft [0.3-m] piece at 3.0 W on average)	IP66	60 ft (18.3 m) per 100 W 24 VDC power supply	Round pre-mounting buttons: 701156 Slide and mount rectangle mounting buttons: 400775
Orange	701189-A-XD	2-ft (0.6-m) Tube	2					
Amber	701189-Y-XD	4-ft (1.2-m) Tube	4					
True Yellow	701189-YT-X							
Green	701189D-G-XD	6-ft (1.8-m) Tube	6					
Blue	701189A-B-XD	8-ft (2.4-m) Tube	8					
White	701189E-W-X	10-ft (3.0-m) Tube	10					
Lemon Yellow†	701189E-WY-X							

ColorLINE Accessories

Joint and corner covers		
Snap-on, frosted joint covers (701807) for clean finish illuminated mitered corners:		
Red, Orange, Yellow, Green, Blue	Inside corner	701800D-IC-Color
	Outside corner	701800D-OC-Color
	Step corner	701800D-SC-Color
White (6500 K)	Inside corner	701800-IC-W
	Outside corner	701800-OC-W
	Step corner	701800-SC-W
Warm White (3500 K)	Inside corner	701800A-IC-WW
	Outside corner	701800A-OC-WW
	Step corner	701800A-SC-WW
Mounting		
Mounting clips	400381-25	

FlexiBRITE Accessories

Mounting	
Mounting clip	701572-25
Mounting track	701456-10

- * "X" in part number denotes desired length. See length code column for length codes.
- † Lemon Yellow illuminates lighter than its daytime color. Lemon Yellow daytime color is Amber.
- ‡ Available in U.S. and Canada only.
- § "Unlit product color charts" provided as a courtesy to give a general idea of product color. Colors in chart not printed using Pantone inks and may vary from actual Pantone number/color. For an accurate representation of product color, a Pantone Color Guide book should be used, or order a sample part. For more information on Pantone, visit Pantone.com.

LEDStripe Accessories

Joint and corner covers		
Snap-on, colored joint and corner covers for clean finish	Joint	701361-Color
	Outside corner	701362-Color
	Inside corner	701363-Color
	Step corner	701364-Color
Cables and connectors		
Hook-up cable, 10-ft (3.0-m)	Connects LEDStripe to power supply	701158-120
Hook-up cable, 15-ft (4.6-m)		701158-180
Jumper kit	For routing around field-cut sections	701385
Y connector	Three-way connector for joining two sections to one	701160-3
Wiring pigtail, large connector	Male, outdoor-rated connector	701187
Wiring pigtail, small connector	Female, outdoor-rated connector	701188
Mounting		
Mounting button	Circular button for standard installation	701156
Mounting clip	Square clip with flanged end	400775
Acrylic end cap	For adjusting product length	400828-FC
Field end cap installation kit	Glue, PCB sealer, de-burr sandpaper, instructions	701491

Unlit product color charts[§]

ColorLINE

Red/ Ruby Red	Orange/ Citrus Orange	Yellow/ Noviol Gold
PANTONE 485 C	PANTONE 151 C	PANTONE 3975 C
Green Emerald Green	Blue/ Bromo Blue	
PANTONE 355 C	PANTONE 2935 C	

FlexiBRITE

Ruby Red	Citrus Orange	Noviol Gold
PANTONE 179 C	PANTONE 1655 C	PANTONE 3955 C
Emerald Green	Bromo Blue	
PANTONE 2242 C	PANTONE 2184 C	

LEDStripe

Red	Orange	Amber	True Yellow
PANTONE 1797 C	PANTONE 1665 C	PANTONE 2012 C	PANTONE 7405 C
Green	Blue	Lemon Yellow	
PANTONE 355 C	PANTONE 2935 C	PANTONE 138 C	

Channel Letter

SloanLED channel letter LED lighting products are designed for the whole spectrum of channel letter applications, including face and halo lit, shallow to deep can depths, and routed acrylic letters.

Extraordinary solutions are built on bright choices

SloanLED provides more than just lighting products.

We're your trusted partner, providing high-efficiency, long lasting light solutions that represent significant energy and maintenance cost savings, easy installation, faster ROI, and exceptional performance with consistent brightness and uniformity, which is what makes SloanLED the bright choice.



Small channel letters

Channel letter applications
2-4" (50-100 mm) deep

Standard channel letters

Channel letter applications
3-8" (75-200 mm) deep

Large channel letters

Channel letter and sign box
applications 5-8" (127-305 mm) deep

Also available:

SloanLED Prism Nano

Premium 12V LED lighting solution for block acrylic signs and small channel letters

- Available in White (7200 K, 6500 K, 5000 K, 4000 K, 3000 K), Red, Green, and Blue
- Designed for applications as shallow as 1" (25 mm)
- Easy flat bends and connections without the need for soldering or PCB cutting



12 VDC



VALUE



12 VDC

VL4

Everyday channel letter lighting solutions

MODS/FT(M)	COLORS	LUMENS/ MOD	EFFICACY
VL4 Mini			
2.5/ft (8.2/m)	White (6500 K, 5000 K, 3000 K)	40	111 lm/W
VL4			
1.4/ft (4.6/m)	White (7200 K, 6500 K), Red, Green, and Blue	Up to 107	Up to 111 lm/W
VL4 HO			
1.5/ft (4.9/m)	White (6500 K)	130	108 lm/W

PERFORMANCE



12 VDC

SloanLED Prism

High-performance 12 VDC channel letter lighting solutions

MODS/FT(M)	COLORS	LUMENS/ MOD	EFFICACY
SloanLED Prism Mini			
2.0/ft (6.6/m)	White (7100 K, 6500 K, 5000 K, 4000 K, 3000 K), Red, Green, and Blue	Up to 50	Up to 116 lm/W
SloanLED Prism			
1.5/ft (4.9/m)	White (7100 K, 6500 K, 5000 K, 4000 K, 3000 K), Red, Orange, Yellow, Green, and Blue	Up to 124	Up to 111 lm/W

PERFORMANCE+



24 VDC

SloanLED Prism²⁴

High-performance 24 VDC channel letter lighting solutions

MODS/FT(M)	COLORS	LUMENS/ MOD	EFFICACY
SloanLED Prism²⁴ Mini			
2.5/ft (8.2/m)	White (7100 K, 6500 K, 5000 K, 4000 K, 3000 K), Red, Green, and Blue	40	100 lm/W
SloanLED Prism²⁴			
Whites 1.2/ft (3.9/m) Red 1.5/ft (4.9/m)	White (7100 K, 6500 K, 5000 K, 4000 K, 3000 K), Red, Green, and Blue	Up to 138	Up to 160 lm/W
SloanLED Prism²⁴ HO			
0.8/ft (2.6/m)	White (6500 K, 5000 K)	180	150 lm/W

PERFORMANCE+

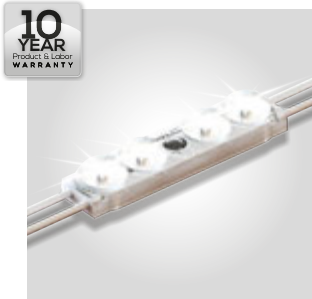
High-performance 24 VDC
channel letter lighting solutions

Modules per ft/m	Description	Part number	Optimal can depth	Power / module	Lumens / module	Efficacy	Protection class	Power capacity	Packaging
SloanLED Prism²⁴ Whites									
1.2/ft (3.9/m)	White 7100 K	701269-7W24S1-MB	3-8" (75-200 mm)	0.86 W	138	160 lm/W	IP66 & 68*	104 modules (86.7 ft / 26.4 m) per 100 W 24 VDC power supply	43.3 ft / 13.2 m (52 modules) per bag
	White 6500 K	701269-6W24S1-MB							
	White 5000 K	701269-5W24S1-MB							
	White 4000 K	701269-4W24S1-MB							
	White 3000 K	701269-3W24S1-MB							
SloanLED Prism²⁴ Colors									
1.5/ft (4.9/m)	Red (626 nm)	701269-RD24S1-MB	3-8" (75-200 mm)	0.43 W	26	60 lm/W	IP66 & 68*	208 modules (138.7 ft / 42.3 m) per 100 W 24 VDC power supply	34.7 ft / 10.6 m (52 modules) per bag
	Green (527 nm)	701269-GR24S1-MB		0.54 W	59	109 lm/W		167 modules (111.3 ft / 33.9 m) per 100 W 24 VDC power supply	
	Blue (468 nm)	701269-BL24S1-MB		0.59 W	18	31 lm/W		152 modules (101.3 ft / 30.9 m) per 100 W 24 VDC power supply	
SloanLED Prism²⁴ High Output									
0.8/ft (2.6/m)	White 6500 K	701269-6W24HJ3-MB	5-12" (127-305 mm)	1.20 W	180	150 lm/W	IP66 & 68*	75 modules (93.8 ft / 28.5 m) per 100 W 24 VDC power supply	47.5 ft / 14.5 m (38 modules) per bag
	White 5000 K	701269-5W24HJ3-MB							
SloanLED Prism²⁴ Mini Whites									
2.5/ft (8.2/m)	White 7100 K	701269-7W24MJ1-MB	2-4" (50-100 mm)	0.40 W	40	100 lm/W	IP66 & 68*	225 modules (90.0 ft / 27.4 m) per 100 W 24 VDC power supply	30.0 ft / 9.1 m (75 modules) per bag
	White 6500 K	701269-6W24MJ1-MB							
	White 5000 K	701269-5W24MJ1-MB							
	White 4000 K	701269-4W24MJ1-MB							
	White 3000 K	701269-3W24MJ1-MB							
SloanLED Prism²⁴ Mini Colors									
2.5/ft (8.2/m)	Red (623 nm)	701269-RD24MJ1-MB	2-4" (50-100 mm)	0.26 W	10	40 lm/W	IP66 & 68*	340 modules (136.0 ft / 41.5 m) per 100 W 24 VDC power supply	30.0 ft / 9.1 m (75 modules) per bag
	Green (529 nm)	701269-GR24MJ1-MB			22	85 lm/W		214 modules (85.6 ft / 26.1 m) per 100 W 24 VDC power supply	
	Blue (468 nm)	701269-BL24MJ1-MB			0.48 W	9		19 lm/W	
SloanLED Prism²⁴ LP									
1.5/ft (4.9/m)	White 7100 K	701269-7W24LJ1-MB	3-8" (75-200 mm)	0.43 W	70	162 lm/W	IP66 & 68*	208 modules (138.7 ft / 42.3 m) per 100 W 24 VDC power supply	43.3 ft / 13.2 m (52 modules) per bag
	White 6500 K	701269-6W24LJ1-MB							
	White 5000 K	701269-5W24LJ1-MB							
	White 4000 K	701269-4W24LJ1-MB							
	White 3000 K	701269-3W24LJ1-MB							

SloanLED Prism²⁴

Premium 24V LED channel letter lighting solution

- Available in Standard (White [7100 K, 6500 K, 5000 K, 4000 K, 3000 K], Red, Green, Blue) and High Output (White [6500 K and 5000 K])
- Ideal for standard channel letters 3-8" (75-200 mm) deep (standard model) and large channel letters 5-12" (125-200 mm) deep (high output model)
- Use fewer modules for faster installation and lower cost per sign

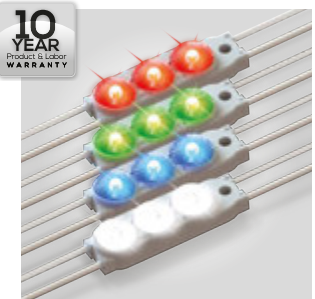


24
VDC

SloanLED Prism²⁴ Mini

Premium 24V LED lighting solution for small channel letters

- Available in White (7100 K, 6500 K, 5000 K, 4000 K, and 3000 K), Red, Green, and Blue
- Ideal for small channel letters 2-4" (50-100 mm) deep
- Use fewer modules for faster installation and lower cost per sign



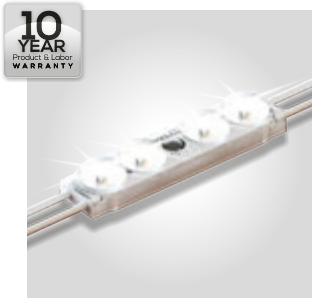
24
VDC

* SloanLED Prism²⁴ IP68 test parameters are 1.3 m submersion for 30 minutes. Do not mount in submerged application or where module will be directly exposed to prolonged flowing or dripping water.

SloanLED Prism²⁴ LP

Premium 24V LED lighting solution for low-profile channel letters

- Available in White (7100 K, 6500 K, 5000 K, 4000 K, and 3000 K)
- Ideal for low-profile channel letters and signs 3-8" (75-200 mm) deep



24
VDC

10
YEAR
Product & Labor
WARRANTY

PERFORMANCE

High-performance 12 VDC channel letter lighting solutions

Modules per ft/m	Description	Part number	Optimal can depth	Power / module	Lumens / module	Efficacy	Protection class	Power capacity	Packaging
SloanLED Prism Whites									
1/ft (3.3/m)	White 6500 K	701269-6WSJ2-MB	3-8" (75-200 mm)	1.12 W	124	111 lm/W	IP66 & 68*	48 modules (48.0 ft / 14.6 m) per 60 W 12 VDC power supply	48.0 ft / 14.6 m (48 modules) per tray
1.5/ft (4.9/m)	White 7100 K	701269-7WSJ1-MB						48 modules (32.0 ft / 9.8 m) per 60 W 12 VDC power supply	32.0 ft / 9.8 m (48 modules) per tray
	White 6500 K	701269-6WSJ1-MB							
	White 5700 K	701269-57SJ1-MB							
	White 5000 K	701269-5WSJ1-MB							
	White 4000 K	701269-4WSJ1-MB							
White 3000 K	701269-3WSJ1-MB	120			107 lm/W				
			115	103 lm/W					
SloanLED Prism Colors									
2/ft (6.6/m)	Red (628 nm)	701269-RDSJ3-MB	3-8" (75-200 mm)	0.72 W	24	33.5 lm/W	IP66 & 68*	75 modules (37.5 ft / 11.4 m) per 60 W 12 VDC power supply	24 ft / 7.3 m (48 modules) per tray
1.5/ft (4.9/m)	Orange (606 nm)	701269-ORSJ1-MB						75 modules (50 ft / 15.2 m) per 60 W 12 VDC power supply	32 ft / 9.8 m (48 modules) per tray
	Yellow (589 nm)	701269-YLSJ1-MB							
	Green (527 nm)	701269-GRSJ1-MB							
	Blue (471 nm)	701269-BLSJ1-MB							
					11	15 lm/W			
			60	83 lm/W					
			18	25 lm/W					
SloanLED Prism Mini Whites									
2.0 ft (6.6 m)	White 7100 K	701269-7WMJ2-MB	2-4" (50-100 mm)	0.43 W	50	116 lm/W	IP66 & 68*	125 modules (62.5 ft / 19.1 m) per 60 W 12 VDC power supply	48.0 ft / 14.6 m (96 modules) per bag, 5 bags per carton
	White 6500 K	701269-6WMJ2-MB							
	White 5000 K	701269-5WMJ2-MB							
	White 4000 K	701269-4WMJ2-MB							
	White 3000 K	701269-3WMJ2-MB			45	105 lm/W			
SloanLED Prism Mini Colors									
2.0 ft (6.6 m)	Red (624 nm)	701269-RDMJ2-MB	2-4" (50-100 mm)	0.30 W	12	40 lm/W	IP66 & 68*	180 modules (90.0 ft / 27.4 m) per 60 W 12 VDC power supply	48.0 ft / 14.6 m (96 modules) per bag, 5 bags per carton
	Green (535 nm)	701269-GRMJ2-MB			30	100 lm/W			
	Blue (470 nm)	701269-BLMJ2-MB			8	27 lm/W			
SloanLED Prism Nano									
7.6 ft (25 m)	White 7200 K	701269-7WNJ1-MB	1-3" (25-75 mm)	0.31 W	33	106 lm/W	IP66	150 modules (19.7 ft / 6.0 m) per 60 W 12 VDC power supply	19.7 ft / 6.0 m (150 modules) per bag, 7 bags per carton
	White 6500 K	701269-6WNJ1-MB							
	White 5000 K	701269-5WNJ1-MB							
	White 4000 K	701269-4WNJ1-MB							
	White 3000 K	701269-3WNJ1-MB			25	83 lm/W			
SloanLED Prism Nano Colors									
7.6 ft (25 m)	Red (625 nm)	701269-RDNJ1-MB	1-3" (25-75 mm)	0.12 W	4	33 lm/W	IP66 & 68*	450 modules (59.0 ft / 18.0 m) per 60 W 12 VDC power supply	19.7 ft / 6.0 m (150 modules) per bag, 7 bags per carton
	Green (527 nm)	701269-GRNJ1-MB			12.3	103 lm/W			
	Blue (470 nm)	701269-BLNJ1-MB			2.3	19 lm/W			

SloanLED Prism

Premium 12V LED channel letter lighting solution

- Available in Standard (White [7100 K, 6500 K, 5700 K, 5000 K, 4000 K, 3000 K], Red, Orange, Yellow, Green, Blue)
- Ideal for standard channel letters 3-8" (75-200 mm) deep
- Versatile mounting options

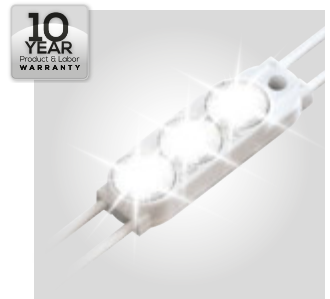
* Prism IP68 test parameters are 1.3 m submersion for 30 minutes. Do not mount in submerged application or where module will be directly exposed to prolonged flowing or dripping water.



SloanLED Prism Mini

Premium 12V LED lighting solution for small channel letters

- Available in White (7100 K, 6500 K, 5000 K, 4000 K, 3000 K), Red, Green, and Blue
- Ideal for small channel letters 2-4" (50-100 mm) deep
- Versatile mounting options



VALUE SERIES

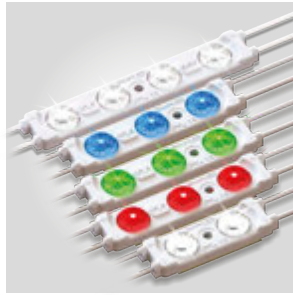
Everyday channel letter lighting solutions

Modules per ft/m	Description	Part number	Optimal can depth	Power / module	Lumens / module	Efficacy	Protection class	Power capacity	Packaging
VL4 Whites									
1.4/ft (4.6/m)	White 7200 K	701269-7W2A2-MB	3-5" (75-125 mm)	0.96 W	107	111 lm/W	IP66	56 modules (40.0 ft / 12.2 m) per 60 W 12 VDC power supply	40.0 ft / 12.2 m (56 modules) per bag, 10 bags per carton
	White 6500 K	701269-6W2A2-MB							
VL4 Colors									
1.5/ft (4.9/m)	Red (623 nm)	701269-3W2A2-MB	3-5" (75-125 mm)	0.50 W	20	40 lm/W	IP66	108 modules (72.0 ft / 21.9 m) per 60 W 12 VDC power supply	72.0 ft / 21.9 m (108 modules) per bag, 4 bags per carton
	Green (524 nm)	701269-GR3A2-MB			50	100 lm/W			
	Blue (468 nm)	701269-BL3A2-MB			9.5	19 lm/W			
VL4 Mini									
2.5/ft (8.2/m)	White 6500 K	701269-6W1A2-MB	2-3" (50-75 mm)	0.36 W	40	111 lm/W	IP66	150 modules (60.0 ft / 18.3 m) per 60 W 12 VDC power supply	60.0 ft / 18.3 m (150 modules) per bag, 3 bags per carton
	White 5000 K	701269-5W1A2-MB							
	White 3000 K	701269-3W1A2-MB							
VL4 High Output									
1.5/ft (4.9/m)	White 6500 K	701269-6W3A1-MB	5-8" (125-200 mm)	1.20 W	130	108 lm/W	IP66	45 modules (30.0 ft / 9.1 m) per 60 W 12 VDC power supply	30.0 ft / 9.1 m (45 modules) per bag, 10 bags per carton
VL4 Super High Output (24 VDC)									
0.65/ft (2.13/m)	White 6500 K	701269-6W4A1-MB	5-12"+ (125-305 mm+)	1.42 W	233	164 lm/W	IP66	60 modules (92.3 ft / 28.1 m) per 100 W 24 VDC power supply	92.3 ft / 28.1 m (60 modules) per bag, 5 bags per carton

VL4

Everyday standard face lit solutions

- Available in Standard (White [7200 K, 6500 K], Red, Green, and Blue), High Output and Super High Output (White 6500 K)
- Ideal for standard channel letters 3-8" (75-200 mm) deep (Standard), large channel letters 5-12"+ (125-305 mm+) deep (High Output and Super High Output)
- Versatile mounting options

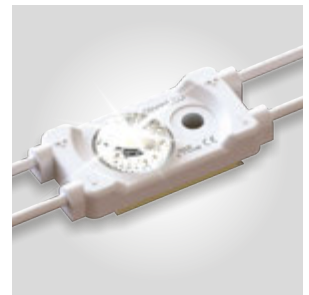


12 VDC 24 VDC

VL4 Mini

Everyday LED lighting solution for small channel letters

- Available in White (6500 K, 5000 K, 3000 K)
- Ideal for small channel letters 2-4" (50-100 mm) deep
- Versatile mounting options



12 VDC

Also available:

LEDs per ft/m	Description	Part number	Optimal can depth	Power per ft/m	Lumens per ft/m	Efficacy	Protection class	Power capacity	Packaging
SloanLED FlexTAPE Whites									
18 / 60	White 6500 K	701990-6W12SA1	2" (50 mm)	1.4 / 4.6 W	160 / 525	114.3 lm/W	IP64*	42 modules (30.0 ft / 9.1 m) per 60 W 12 VDC power supply	Ten (10) 16.4-ft (5-m) reels per carton
	White 5000 K	701990-5W12SA1							
	White 3500 K	701990-3512SA1							
SloanLED FlexTAPE Colors									
18 / 60	Red (623 nm)	701990-RD12SA1	2" (50 mm)	1.1 / 3.6 W	39.6 / 129.8	35.4 lm/W	IP64*	3 assemblies (49.2 ft / 15.0 m) per 60 W 12 VDC power supply	Ten (10) 16.4-ft (5-m) reels per carton
BendLUX									
3	White 6500 K	701960-6WS241	1.2" (30 mm)	0.3 W per section, 4.2 per strip	365	85 lm/W	N/A	12.5 strips per 60 W 12 VDC power supply	12 strips per box

* May be installed in damp or wet environment in enclosure with appropriate weather protection. Do not mount in submerged application or where module will be directly exposed to prolonged flowing or dripping water.

Sign Cabinet/Box

SloanLED offers brilliant sign lighting solutions for single and double-sided, narrow to large, new and retrofit, box and cloud signs. Our products are designed and engineered with sign makers in mind, to provide bright, even illumination, incredible ROI, and fast, easy installation. We spend our time inside the box, to provide lighting solutions that go beyond the box to brighten your bottom line.



SloanLED PrismBEAM²⁴

Pre-assembled, stick-based LED illumination for new & retrofit sign cabinet applications

Leveraging the power and efficiency of our 24 V channel letter modules, SloanLED PrismBEAM²⁴ delivers bright, uniform illumination in new and retrofit, single and double-sided sign cabinets.

- Available in all standard lamp sizes
- Easy installation using existing sockets, requiring no connectors or adapters
- Incredible efficacy at 165 lm/W—44% more efficient than its predecessor
- Uniform illumination at 5-8" (125-200 mm) optimum, up to 16" (400 mm) maximum from face

10 YEAR
Product & Labor
WARRANTY

24
VDC



	Single-sided	Double-sided	
Lengths	18 in (0.46 m)	701972-6W24PS181	701972-6W24PD181
	24 in (0.61 m)	701972-6W24PS241	701972-6W24PD241
	30 in (0.76 m)	701972-6W24PS301	701972-6W24PD301
	36 in (0.91 m)	701972-6W24PS361	701972-6W24PD361
	42 in (1.07 m)	701972-6W24PS421	701972-6W24PD421
	48 in (1.22 m)	701972-6W24PS481	701972-6W24PD481
	60 in (1.52 m)	701972-6W24PS601	701972-6W24PD601
	64 in (1.63 m)	701972-6W24PS641	701972-6W24PD641
	72 in (1.83 m)	701972-6W24PS721	701972-6W24PD721
	84 in (2.13 m)	701972-6W24PS841	701972-6W24PD841
	96 in (2.44 m)	701972-6W24PS961	701972-6W24PD961
	108 in (2.74 m)	701972-6W24PS1081	701972-6W24PD1081
117 in (2.97 m)	701972-6W24PS1171	701972-6W24PD1171	
120 in (3.05 m)	701972-6W24PS1201	701972-6W24PD1201	
Color temperatures	6500 K		
Efficacy	165 lm/W		
Optimum cabinet depth	5-8" (127-203 mm)	10-16" (254-406 mm)	
Protection class	IP66 & IP68*		
Life rating	>60,000 hours		
Fastening	Mounts to existing lampholders or SloanLED PrismBEAM ²⁴ brackets		

SloanLED PrismBEAM²⁴ Accessories

Bracket	
Optional – Sold in bags of 10	402607-10



* SloanLED PrismBEAM²⁴ IP68 test parameters are 1.3 m submersion for 30 minutes. Do not mount in submerged application or where module will be directly exposed to prolonged flowing or dripping water.

SignBOX 3

LED illumination for single or double-sided sign boxes

SignBOX 3, for single or double-sided sign cabinets, features micro prism lens technology engineered to deliver bright, uniform illumination and wider spacing in new or retrofit sign boxes.

- Illuminates 5" (125 mm) from the face
- SignBOX 3 Module features a peel-and-stick adhesive back for fast, easy installation
- 24 VDC loading allows 48 single-sided modules or 24 double-sided modules per power supply for maximum efficiency and fewer power supplies

Part number	Strapped single-sided		Strapped double-sided		Module
	6500 K	701946-6WSLS1	701946-6WDSL1	701946-6WSLT1	701946-6WSLT1
5000 K	701946-5WSLS1	701946-5WDSL1	701946-5WSLT1	701946-5WSLT1	
Modules per ft (m)	1 (3.3)				
Coverage per row	12" (305 mm)				
Optimal light throw	5 - 12" (125 - 300 mm) from face				
Protection class	IP66 & IP68*				
Life rating	>60,000 hours				
Power per module	1.92 W	3.84 W	1.92 W		
Efficacy	156 lm/W				
Power capacity per SloanLED 100 W 24 VDC power supply	48	24	48		
Fastening	Clips with mechanical fasteners		Peel-n-stick		
Packaging	60 modules per carton, 40 clips included		3 trays, 48 modules per tray		
Lumens per module	300	600	300		

SignBOX 3 Accessories

Mounting hardware	
Bracket – Bag of 10	402107-10
Coupler – Bag of 10	402108-10
Clip – Bag of 20	402106-20



SloanLED BrightLINE

LED illumination for shallow, single-sided sign boxes

SloanLED BrightLINE delivers bright, uniform illumination and fast, easy installation in shallow, single-sided, fabric-face light boxes.

- Ideal for single-sided, fabric-face light boxes 1.6 - 4.7" (40 - 120 mm) deep
- Features prism lens technology for bright, even illumination
- Can be cut in width and length for zero waste

24
VDC



Part number	Long		Short	
	701989-6W24SA1	701989-6W24CA1		701989-6W24CA1
Color temperatures	6500 K			
Coverage per row	Cabinet depth	1.6" (40 mm)	4" (100 mm)	
		2" (50 mm)	5" (120 mm)	
		2.4" (60 mm)+	6" (150 mm)	
Strips per foot / meter	2.0 / 6.7 (fully spaced)			
Life rating	>54,000 hours			
Power per strip	4.8 W	1.6 W		
Efficacy	104 lm/W			
Lumens per strip	500	167		
Power capacity per SloanLED 100 W 24 VDC power supply	18 strips (8.9 ft / 2.7 m)	56 strips (27.6 ft / 8.4 m)		
Fastening	Peel-n-stick and mechanical			
Packaging	Ten 1.6-ft (0.5-m), 18-piece, daisy-chains per carton	Ten 6.3" (160 mm), 18-piece, daisy-chains per carton		

PosterBOX Slim 2

Side illumination for shallow light boxes

PosterBOX™ Slim 2 washes light across single and double-sided displays using FanFlare™ lens technology that optimizes the light inside the box. The result is uniform light without the stripes associated with fluorescent tubes.

- Excellent white light intensity and uniformity
- Optimal for applications as shallow as 2" (50 mm), e.g., indoor textile prints, movie posters, and cabinets using FlexFace®

* Prism IP68 test parameters are 1.3 m submersion for 30 minutes. Do not mount in submerged application or where module will be directly exposed to prolonged flowing or dripping water.

† Testing highly recommended as all substrates and graphics vary.

‡ For best performance, 6.5 m (2 ft) spacing is recommended.



Part number	701946-6WXLP3	701946-SWXLP3
Color temperatures	6500 K	5000 K
Light coverage†	2 ft (0.6 m)	
Modules per foot/meter	1.4 / 4.6	
Minimum box depth	2 in (50 mm), single or double-sided	
Protection class	IP66	
Viewing angle	15° × 43°	
Power per module	1.68 W	
Efficacy	110 lm/W	
Lumens per module	185	
Power capacity	32 modules per SloanLED 60 W 12 VDC power supply	
Fastening	Peel-n-stick and mechanical	
Packaging	32 daisy chained modules per bag, 4 bags per carton	

PosterBOX 3

Large, shallow fabric-faced light box illumination

PosterBOX™ 3, engineered specifically for large, fabric-faced light box applications, is the bright and even lighting solution this unique application requires. With an output of 1700 lumens (Long) and a built-in LED module spacer, striping and spotting vanish.

- Slim, edge mounted modules make installs fast and easy
- Bright, even illumination in large cabinets with shallow depths of 2" (50 mm) for single-sided applications and 4" (100 mm) for double-sided applications
- High efficiency and long life
- Built-in module spacer eliminates measuring and yields perfect LED pitch every time

Part number	Short	701946-6WSRP1
	Long	701946-6WLRP1
Viewing angle	12.2° × 44.8° illumination	
Color temperature (nominal)	6500 K	
Minimum cabinet depth	Single-sided	3" (75 mm)
	Double-sided	4" (100 mm)
Protection class	IP66	
Power per module	Short	7.2 W
	Long	14.0 W
Efficacy	Short	118 lm/W
	Long	121 lm/W
Lumens per assembly	Short	850
	Long	1700
Power capacity	6 modules per SloanLED 100 W 24 VDC power supply	
Fastening	Mechanical fasteners, Peel-n-stick (optional)	
Packaging	6 assemblies per tray, 5 trays per carton	

PosterBOX Mini

Side illumination for shallow or narrow light boxes

PosterBOX™ Mini is a cost-effective, edge-lit cabinet lighting solution for lightbox applications as shallow as 2" (50 mm) deep, and gives installers unprecedented freedom with adjustable spacing and an innovative design that accommodates shallow light boxes of any shape making it the bright choice for a variety of applications.

- Cost effective, edge-lit cabinet lighting solution for applications as shallow as 2" (50 mm) deep
- Innovative design and adjustable spacing make installation easy for a variety of light boxes of different depths and shapes
- FanFlare™ technology projects light in a fan pattern to evenly illuminate sign face

Part number	701946-6WMLP1
Viewing angle	15 × 40°
Module spacing	7.4" (188 mm) center-to-center
Protection class	IP66
Power per module	1.2 W
Efficacy	87 lm/W
Lumens per module	104
Power capacity	45 modules per SloanLED 60 W 12 VDC power supply
Fastening	Peel-n-stick and mechanical
Packaging	60 modules per bag, 10 bags per carton

For more information, visit SloanLED.com

PosterBOX ID

High-performance light box illumination for interior signage and POP applications

PosterBOX™ ID is a value-driven lighting solution delivering the power and brilliance of PosterBOX 3 to indoor applications—trimming unnecessary hardware and outdoor protection to offer a low-cost solution with the same quality and reliability you've come to expect from SloanLED.

- Illuminate box widths up to 10 ft (3 m) by placing product on opposing sides of the display
- Top-tier LED chips and high-performance optics
- Constant Current Technology

Part number	Short	701946-6WSNP1
	Long	701946-6WLNLP1
Location rating	Indoor use only	
Color temperature	6500 K	
Power per assembly	Short	7.2 W
	Long	14.0 W
Efficacy	Short	118 lm/W
	Long	121 lm/W
Lumens per assembly	Short	850
	Long	1700
Power capacity	Short	Max. of 12 units per SloanLED 100 W 24 VDC power supply
	Long	Max. of 6 units per SloanLED 100 W 24 VDC power supply
Fastening	Peel-n-stick and mechanical	
Packaging	Six (6) assemblies per bag, 5 bags per carton	

Linear Lighting

Linear Lighting from SloanLED is a great solution for illuminating cove, awning, and wall wash applications or to highlight non-illuminated signs.



HighLINER 3

Outdoor and indoor linear lighting

- Easy installation for both new construction and retrofit
- Improves walkway and aisle visibility and building aesthetics
- Easily daisy-chain up to six (6) 4-ft (1.2-m) luminaires with 100 W driver
- NSF/ANSI 2 qualified for use around food processing and on processing equipment



Color temperatures (CCT)		3500 K	5000 K
Part number	1' (0.3 m), 4.6 W	701912-L135C3i18	701912-L150C3i18
	2' (0.6 m), 9.3 W	701912-L235C3i18	701912-L250C3i18
	4' (1.2 m), 18.5 W	701912-L435C3i18	701912-L450C3i18
	6' (1.8 m), 27.8 W	701912-L635C3i18	701912-L650C3i18
	8' (2.4 m), 37.0 W	701912-L835C3i18	701912-L850C3i18
Output (nominal)	1' (0.3 m), 4.6 W	559 Lumens	607 Lumens
	2' (0.6 m), 9.3 W	1,119 Lumens	1,168 Lumens
	4' (1.2 m), 18.5 W	2,237 Lumens	2,430 Lumens
	6' (1.8 m), 27.8 W	3,356 Lumens	3,646 Lumens
	8' (2.4 m), 37.0 W	4,475 Lumens	4,861 Lumens
Efficacy*	126 lm/W	132 lm/W	
Color rendering (CRI)	>80		
Ingress protection	Luminaire: IP68 [†] ; Std. wire nut with housing [‡] : IP66		
UL location rating	Dry, damp, and wet locations		
Life rating	L ₇₀ >100,000 hours calculated [‡]		
Dimming	All luminaires dimmable with 0-10 V _D or PWM input to drivers		

Specifications subject to change without notice.

SlimLINER

Low-profile outdoor and indoor linear lighting

- Fast, easy installation with versatile mounting options
- Can be cut in the field to custom lengths
- Slim, lightweight, low-profile fixture
- 12" (305 mm) bend radius
- Illuminates awnings evenly
- Constant Current Technology (CCT)



Part number	701956-5WL461	701956-3WL461
Color temperatures (CCT)	5000 K	3500 K
Lumens per fixture	970	825
Color rendering (CRI)	70 (nominal)	82 (nominal)
In-field bends	Radial bend: 12 in (305 mm)	
Protection class	IP66 & IP68	
Fastening	Peel-n-stick or mounting clips (401203), 4 included with each unit	
Power capacity	6 units per SloanLED 60 W 12 VDC power supply	

* Tolerance range for optical and electrical data +/- 15%.

† IP68 ratings provide protection for extreme outdoor and wet applications, or harsh weather exposure. Do not mount in submerged applications.

‡ Based on LED component manufacturer data.

§ Luminaires ship with mounting clips and wire nut housings.

SloanLED LEDBlade

LED canopy fascia
& wall wash fixture

- Ideal for canopy fascia and wall wash applications requiring excellent light throw
- Can be cut to custom lengths in the field
- Linear form factor for fast, easy installation
- No UV emissions
- 5-year parts and labor assistance warranty



**24
VDC**

Part number	701994-6WA5X1
Color temperature (CCT)	6500 K
Lumens per assembly	3,118
Life rating	$L_{70} @ >60,000$ hours
Efficacy	120 lm/W
Ingress protection	IP66
UL location rating	Dry, damp, and wet
Fastening	Mounting clips
Power capacity	Three (3), 5-ft (1.5-m) SloanLED LEDBlade sections per SloanLED 100 W 24 VDC power supply

SloanLED LEDBlade Accessories

Cables and connectors		
Hook-up cable, 10-ft (3.0-m)	Connects LEDBlade to power supply	701158-120
Hook-up cable, 15-ft (4.6-m)		701158-180
Wiring pigtail, large connector	Male, outdoor-rated connector	701187-DC
Wiring pigtail, small connector	Female, outdoor-rated connector	701188-DC
Mounting		
Mounting clip	For mounting product to surfaces	402453
Field end cap	For adjusting product length	402494
Field end cap installation kit	Glue, PCB sealer, de-burr sandpaper, instructions	701491

Power Supplies

SloanLED power supplies are engineered to last and are among the most rugged in their class.

12 VDC* – Compatible with SloanLED 12 VDC products

Model	Part number	Dimensions	Nominal input voltage	Max. input current	Power output	Location rating	Operating temperature	Protection class
Self-Contained 20 W	701680	4.65 in × 1.38 in × 1.03 in (118 mm × 35 mm × 26 mm)	100-240 VAC, 50-60 Hz	0.55 A	20 W @ 12 VDC, Class 2 output	Dry and damp locations	-30° C to +60° C	IP67
60C2 60 W	701507-60C2	6.26 in × 2.17 in × 1.30 in (159 mm × 55 mm × 33 mm)	100-277 VAC, 50-60 Hz	0.80 A	60 W @ 12 VDC, Class 2 output	Dry and damp locations	-40° C to +60° C, derate to 50% of max load at +70° C	IP66
60C3(D) 60 W	701507-60C3(D)	5.80 in × 1.80 in × 1.00 in (147 mm × 46 mm × 25 mm)	100-277 VAC, 50-60 Hz	0.80 A	60 W @ 12 VDC, Class 2 output	Dry and damp locations	-40° C to +60° C, derate to 50% of max load at +70° C	IP64
60W3 60 W	701507-60W3	9.76 in × 1.76 in × 1.36 in (248 mm × 45 mm × 35 mm)	100-277 VAC, 50-60 Hz	0.80 A	60 W @ 12 VDC, Class 2 output	Dry, damp, and wet locations	-40° C to +60° C, derate to 50% of max load at +70° C	IP68
120D1 120 W	701507-120D1	9.6 in × 2.2 in × 1.7 in (244 mm × 56 mm × 43 mm)	100-277 VAC, 50-60 Hz	1.70 A	120 W @ 12 VDC, two (2) Class 2 outputs	Dry and damp locations	-40° C to +60° C, natural convection cooling	IP54

24 VDC* – Compatible with SloanLED 24 VDC products

Model	Part number	Dimensions	Nominal input voltage	Max. input current	Power output	Location rating	Operating temperature	Protection class
24 VDC 100 W <i>Dry, damp, and wet</i>	701895-24C1	9.29 in × 2.44 in × 1.55 in (236 mm × 62 mm × 39 mm)	100-277 VAC, 50-60 Hz	1.30 A	100 W @ 24 VDC, Class 2 output	Dry, damp, and wet locations	-40° C to +60° C, derate to 50% of max load at +70° C	IP68
24S1 100 W	701895-24S1	7.60 in × 2.48 in × 1.59 in (193 mm × 63 mm × 40 mm)	100-277 VAC, 50-60 Hz	1.40 A	96 W @ 24 VDC, Class 2 output	Dry and damp locations	-40° C to +60° C	IP64
24S2(D) 100 W <i>Dimming and non-dimming</i>	701895-24S2(D)	8.60 in × 1.73 in × 1.14 in (218 mm × 44 mm × 29 mm)	108-277 VAC, 50-60 Hz	1.20 A	96 W @ 24 VDC, Class 2 output	Dry and damp locations	-40° C to +60° C, derate to 50% of max load at +65° C	IP54
300T1 300 W	701895-300T1	15.3 in × 5.12 in × 1.5 in (389 mm × 130 mm × 38 mm)	100-277 VAC, 50-60 Hz	4.0 A	3 × 96 W @ 24 VDC, Class 2 output	Dry and damp locations	-40° C to +60° C, derate to 50% of max load at +70° C	IP54

Accessories



Universal Primary Wire Enclosure[†]
402218



Universal LED Wireless Dimmer
601115



Wired LED Dimming Solutions[‡]
Dimming module - 701817
Dim control box - 701843

* Configured for Class 2 Output.
† Compatible with 701507-60C1, 701507-60C2, 701507-120D1, and 701936.
‡ Wired dimming solution only compatible with specific 12V / 24V SloanLED power supplies. Visit SloanLED.com for more information.

Outdoor Commercial

SloanLED outdoor commercial LED lighting systems capture customer attention with consistent and bright illumination, in addition to providing sizable energy savings over non-LED fixtures.



All SloanLED Lighting Systems products installed in the U.S. are protected by our **NEW Performance+ Service Warranty**. Visit product page for details

Revolutionary design for powerful solutions.

PDL3 MODUS

LED lighting system

PDL3 MODUS sets a new standard in canopy/soffit lighting with its slim, lightweight, 1" (25 mm) design, optimized Type V symmetric distribution, included driver, and IP68 rating offering the industries best protection from dust and water intrusion.

- Standard power supply module includes three field-selectable lumen output power settings: High (123, 141, 164 W output), Medium (76, 98, 119 W output), and Low (36, 50, 64 W output)



Standard



High Output

- Superior efficacy, up to 159 lm/W, for lower energy consumption and a smaller carbon footprint
- Faster ROI, industry-leading 10-year warranty, and virtually maintenance-free
- **Energy savings up to 250% over typical HID fixtures**

* Requires 1-10 V connector cable (P/N 410168).
 † ATEX certification for luminaire at 5000 K CCT only.
 ‡ All models are shipped at the highest system power setting unless ordered with factory preset options P1 or P2.
 § Based on 5000 K CCT data.



	PDL3 MODUS						PDL3 MODUS High Output		
	M75			M150			MH200		
Power settings	Low (36 W) P2	Med (50 W) P1	High (64 W) DF†	Low (76 W) P2	Med (98 W) P1 [‡]	High (119 W) DF†	Low (123 W) P2	Med (141 W) P1	High (164 W) DF†
System efficacy [§]	159.3lm/W	157.9 lm/W	155.0 lm/W	152.7 lm/W	146.9 lm/W	142.5 lm/W	169.6 lm/W	167.8 lm/W	165.5 lm/W
Input voltage	100-277 VAC, 50-60 Hz								
Delivered lumens [§]	5,670	7,869	9,951	11,540	14,800	16,880	20,700	23,210	26,040
Light distribution	Symmetric (Type 5)								
Color temperature (CCT)	4000 K, 5000 K								
Ingress protection	IP68 (highest dust and water protection)								
UL location rating	Suitable for wet locations								
Life rating	Reported: L ₇₀ >60,000 hours; Calculated: L ₇₀ >150,000 hours						Reported: L ₇₀ >60,000 hours; Calculated: L ₇₀ >175,000 hours		
Dimming	1-10 VDC control on power supply*								

Specifications subject to change without notice.

Canopy/Soffit Applications

Driver enclosure

Order number: 601106



Included in kit: Power supply enclosure, gasket, and mounting hardware.†

- Power supply enclosure allows water to pass through and out
- Gasket seals against canopy – Eliminates need to seal installation with tar/roofing material

Surface Mounted Applications

Surface mounting enclosure

Order number: 601022-M



Included in kit: SloanLED surface mounting box.†

- Mounts to: Solid flat surface, reinforced J-box

Shoebbox Retrofit Applications

Shoebbox mounting plate

Order number: 401397 (White), 401397-BZ (Bronze)



401397 (shoebbox plate – **ordered separately**) combined with any PDL3 luminaire will complete typical 24 × 24 shoebbox housing retrofits.‡

Ordering Information											
Part number											
Example: 701948-5WTWT3-M150											
701948 -	<input type="text"/>	T	<input type="text"/>	3-	<input type="text"/>	<input type="text"/>	<input type="text"/>	<input type="text"/>	<input type="text"/>	<input type="text"/>	<input type="text"/>
Color temp. (CCT)		Body color		Power* (Low, Med, High power settings)							
Code	Desc.	Code	Desc.	Code	Desc.	Code	Desc.	Code	Desc.	Code	Desc.
4W	4000 K	BZ	Bronze (MH200 only)	M75	75 W power (36, 50, 64 W output)	(blank)	High power setting (default)				
5W	5000 K	WT	White	M150	150 W power (76, 98, 119 W output)	P1	Medium power setting				
				MH200	200 W high output power (123, 141, 164 W output)	P2	Low power setting				



Symphony Floodlight

LED floodlight
SYM-F

Symphony Floodlights from SloanLED provide superior uniformity and performance and are available in a variety of sizes, wattages, and optic choices

- Features dimming drivers standard and 3 or 7 pin photocontrol options
- Small footprint size, smaller than equivalent output HID fixtures
- Includes universal mounting plate for all standard J-boxes

	70 W	100 W	150 W	200 W	240 W
COB LED	Dual	Triple		Quad	
Efficacy	126 lm/W	125 lm/W	134 lm/W	129 lm/W	126 lm/W
Lumens*	9,200	12,900	20,000	27,400	29,500
NEMA distributions	5H4V, 5H5V, 7H6V				
Color temperatures	3000 K, 4000 K, 5000 K				
Color rendering	>70 CRI				
Dimming	0-10 V dimming				
Ingress protection	IP65				
Life rating	Calculated L ₇₀ @ 25° C ambient >150,000 hours per TM21-11				
Body colors	Black, Bronze, Silver, White, Custom				



Ordering Information													
Part number													
Example: SYM-F-L-150UL-4K1-76-01-BK													
SYM-F-	<input type="text"/>	<input type="text"/>	-	<input type="text"/>	1-	<input type="text"/>	-	<input type="text"/>	-	<input type="text"/>	<input type="text"/>		
Power		Input voltage		Color temp.		Dist.		Options†				Finish	
Code	Desc.	Code	Desc.	Code	Desc.	Code	Desc.	Code	Desc.	Code	Desc.	Code	Desc.
M-70	70 W	UL	120-277 VAC	3K	3000 K	54	5H4V	01	Button photocell	NS	No sensor	BK	Black
L-100	100 W	UH	347-480 VAC	4K	4000 K	55	5H5V	01‡	Twist photocell	02	Motion sensor	BZ	Bronze
L-150	150 W			5K	5000 K	76	7H6V	03‡§	01 & 02	04‡	SPD	CC	Custom§
X-200	200 W							07	L & X type only	05	SPD+01	SL	Silver
X-240	240 W									06	SPD+02	WT	White
										07	SPD+03		

* Based on 5000 K CCT.
 † 4 kV standard surge protection, "L" and "M" 120 V and 6 kV standard surge protection, "X" 120 V.
 ‡ 7-pin socket only.
 § CC requires approved RAL ID.
 ¶ 10 kV for "M" and 20 kV for "L" and "X".

SurfLite 1

LED surface mounted canopy light
LCG-CP



- Slim design fits more applications with low overhead clearance
- Superior optic design for low glare and even light distribution

System power	45 W [‡]	65 W [‡]
Input voltage	100-277 VAC, 50-60 Hz	
System efficacy	130 lm/W	130 lm/W
Power factor	>0.95	
Light output	5,850 Lumens	8,450 Lumens
Color temperatures (CCT)	3000 K, 4000 K, 5000 K	
Color rendering (CRI)	>70	
Dimming	1-10 VDC control on power supply	
Ingress protection	IP65	
UL location rating	Suitable for wet locations	
Life rating	>50,000 hours at maximum operating conditions	
Finish	Bronze and White [†] powder paint	

Ordering Information

Part number
Example: LCG-CP-45W-U-40K-BZ-D1

LCG-CP- -U- - -D1

Wattage		Kelvin temperature		Finish	
Code	Description	Code	Description	Code	Description
45W	45 W	30K	3000 K [†]	BZ	Bronze
65W	65 W	40K	4000 K	WT	White [†]
		50K	5000 K		

Twilight

LED post top fixture
LCG-PT



Twilight LED post top luminaire delivers bright, even illumination to a broad range of applications.

- Tier 1 LED for high luminous efficiency and long life
- High-crystalline optical glass lens for reduced glare

System power	30 W	40 W	50 W	80 W [‡]	100 W [‡]
Input voltage	100-277 VAC and 480 VAC ^Δ				
System efficacy	90 lm/W	90 lm/W	96 lm/W	93 lm/W	91.5 lm/W
Power factor	>0.90				
Light output [§]	2,826 Lumens	3,600 Lumens	4,800 Lumens	7,512 Lumens	9,147 Lumens
Color temperatures (CCT)	3000 K, 4000 K, 5000 K				
Color rendering (CRI)	>70				
Dimming	Non-dimming				
Ingress protection	IP65				
UL location rating	Suitable for wet locations				
Life rating	L ₇₀ @ 2 >50,000 hours				
Finish	Black, Bronze, or White [†] polyester powder coat				

Ordering Information

Part number
Example: LCG-PT-30W-U-40K-T2-BZ

LCG-PT- - - - -

Power		Voltage		Kelvin temp.		Optics		Finish	
Code	Desc.	Code	Desc.	Code	Desc.	Code	Desc.	Code	Desc.
30W	30 W	U	100-277 VAC	30K	3000 K [†]	T2	Type II	BK	Black
40W	40 W	H	480 VAC ^Δ	40K	4000 K	T5	Type V	BZ	Bronze
50W	50 W			50K	5000 K			WT	White
80W	80 W [‡]								
100W	100 W [‡]								

Optimus 2

LED pole mount light
LCA-SB



Optimus 2 is a value-engineered solution, built for high-performance, durability, and fast, easy installation, and features a full selection of optics, mounting options, and outputs, making it flexible enough to suit any outdoor lighting need.

- Features dimming drivers standard and 3 or 7 pin photocontrol options
- Small footprint size, smaller than equivalent output HID fixtures
- Includes universal mounting plate for all standard J-boxes

	60 W	100 W	150 W	200 W	300 W
Efficacy [§]	156.4 lm/W	140.7 lm/W	144 lm/W	150.9 lm/W	142.7 lm/W
Light output (nominal)	9,776.5 Lumens	14,167 Lumens	21,323.5 Lumens	29,989.8 Lumens	41,582.7 Lumens
Light distribution	Type II, Type III, Type IV, and Type V				
Color temperatures	3000 K, 4000 K, 5000 K				
Color rendering	>70 CRI				
Dimming	0-10 VDC / PWM or motion/daylight sensor control				
Ingress protection	IP66				
Life rating	122,000 (calculated)				
Body colors	Black [†] , Bronze, Gray [†] , and White				

Ordering Information

Part number
Example: LCA-SB-300W-U-50K-T5-BK-X-D1

LCA-SB- - - - - -X-

Power		Input voltage		Color temp.		Light dist.		Body color		Control	
Code	Desc.	Code	Desc.	Code	Desc.	Code	Desc.	Code	Desc.	Code	Desc.
60W	60 W	U	120-277 VAC	30K	3000 K [†]	T2	Type II	BK	Black [†]	D1	0-10VDC/PWM control
100W	100 W	H	347-480 VAC	40K	4000 K	T3	Type III	BZ	Bronze	D2	Motion/daylight sensor control
150W	150 W			50K	5000 K	T4	Type IV	GY	Gray [†]	D3	0-10VDC/PWM + 3-pin photocell socket
200W	200 W					T5	Type V	WT	White	D5	0-10VDC/PWM + 5-pin photocell socket
300W	300 W										

* Available by special order, please contact SloanLED for lead times.
 † DLC Classified as "Parking Garage" distribution.
 ‡ DLC Classified as "Low Bay" distribution.
 § Based on 5000 K CCT.
 ¶ 80 W and 100 W models are not DLC listed and are available special order only. Please contact SloanLED Sales.
 Δ 480 VAC uses 480-277 VAC stepdown transformer. Field install, ship alongside.

Detroit

LED semi cutoff wall pack
LCG-WPSC

Detroit semi-cutoff wall pack fixtures provide great security or broad area lighting in alleyways, commercial parks, and commercial/manufacturing facilities. Designed with lumen outputs of 5000 lm to 16,000 lm, they are a perfect retrofit for 250 W to 400 W HID fixtures.



DLC Premium applies to 45 & 70 W models. All other are DLC Standard.

- Die cast aluminum provides efficient cooling and durability
- Excellent optics design
- Easy to install with hinged base
- Mounts over J-box or wire with conduit by knockouts on three sides

System power	45 W	70 W	100 W	150 W
Input voltage	100-277 VAC or 347-480 VAC [†]			
Power factor	>0.95			
Light output [‡]	5,450 Lumens	8,450 Lumens	10,895 Lumens	16,686 Lumens
Color temperatures (CCT)	3000 K [‡] , 4000 K, 5000 K			
Color rendering (CRI)	>70		>80	
Dimming	Non-dimming			
Ingress protection	IP65			
UL location rating	Suitable for wet locations			
Life rating	>50,000 hours (L ₇₀) [§]			
Finish	Bronze or White [†] polyester powder coat			

Ordering Information

Part number

Example: LCG-WPSC-70W-U-50K-BZ

LCG-WPSC- - - -

Nominal wattage		Voltage		Kelvin temperature		Finish	
Code	Desc.	Code	Desc.	Code	Desc.	Code	Desc.
45W	45 W	U	100-277 VAC	30K	3000 K [‡]	BZ	Bronze
70W	70 W	H	347-480 VAC [†]	40K	4000 K	WT	White [†]
100W	100 W			50K	5000 K		
150W	150 W						

Portland

LED full cutoff wall pack
LCG-WPFC

Portland full-cutoff wall pack fixtures provide a glare-free pathway and architectural wall light in retail malls, condominiums and apartments, business parks, and educational facilities. Designed for Dark Sky compliance, they are the first choice for public areas that are light sensitive.



- Die cast aluminum provides efficient cooling and durability
- Excellent optics design with zero light above 90°
- Easy to install with hinged base
- Mounts over J-box or wire with conduit by knockouts on three sides of base

System power	45 W	70 W
Input voltage	100-277 VAC or 347-480 VAC [†]	
Power factor	>0.95	
Light output [‡]	5,946 Lumens	8,463 Lumens
Color temperatures (CCT)	3000 K [‡] , 4000 K, 5000 K	
Color rendering (CRI)	>70	
Dimming	Non-dimming	
Ingress protection	IP65	
UL location rating	Suitable for wet locations	
Life rating	>50,000 hours (L ₇₀) [§] at maximum operating conditions	
Finish	Bronze or White [†] polyester powder coat	

Ordering Information

Part number

Example: LCG-WPFC-70W-U-50K-BZ

LCG-WPFC- - - -

Nominal wattage		Voltage		Kelvin temperature		Finish	
Code	Desc.	Code	Desc.	Code	Desc.	Code	Desc.
45W	45 W	U	100-277 VAC	30K	3000 K [‡]	BZ	Bronze
70W	70 W	H	347-480 VAC [†]	40K	4000 K	WT	White [†]
				50K	5000 K		

* Based on LED component manufacturer data. ‡ Based on 5000 K data.
† Available by special order, please contact SloanLED for lead times. § Based on 4000 K data.

Solarta

LED flood lights
LCG-FL

Solarta floodlights are designed as a replacement for 100 W HID fixtures in landscape, architectural wall wash, and signage lighting. Their versatile design makes them a great solution where you need task or accent lighting in your outdoor application.

- Medium range floodlights for outdoor foliage, sign, and accent lighting
- Tier 1 LED for high efficiency and long life
- Mounting knuckle and trunnion are adjustable 180°



System power	45 W	70 W
Input voltage	110-277 VAC or 200-480 VAC [†]	
Power factor	>0.95	
Light output [‡]	5,400 Lumens	8,400 Lumens
Color temperatures (CCT)	3000 K [‡] , 4000 K, 5000 K	
Color rendering (CRI)	>70	
Driver efficiency	>90%	
Ingress protection	IP65	
UL location rating	Suitable for wet locations	
Life rating	>50,000 hours (L ₇₀) [§] at maximum operating conditions	
Finish	Bronze or White [†] polyester powder coat	

Ordering Information

Part number

Example: LCG-FL-45W-U-30K-BZ-K

LCG-FL- - - - -

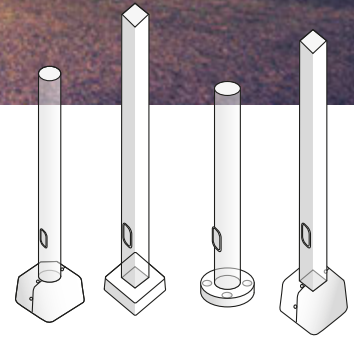
Nominal wattage		Voltage		Kelvin temperature		Finish		Mounting	
Code	Desc.	Code	Desc.	Code	Desc.	Code	Desc.	Code	Desc.
45W	45 W	U	100-277 VAC	30K	3000 K [‡]	BZ	Bronze	K	Knuckle
70W	70 W	H	200-480 VAC [†]	40K	4000 K	WT	White [†]	T	Trunnion [†]
				50K	5000 K				

Solid support for brilliant outdoor lighting designs

LIGHT POLE & BRACKET MOUNTING SOLUTIONS

As the complete solution provider for all your lighting needs, SloanLED offers steel and aluminum light pole and bracket mounting solutions in a variety of heights, styles, configurations, and colors for total flexibility in any outdoor lighting design. Our light poles and brackets are fully industry-qualified and deliver the durability and reliability you've come to expect from SloanLED.

- Single source for warranty concerns
- Designed to meet AASHTO requirements
- Professional engineering stamped (P.E.)
- In-house technical consultation available



Ordering Information															
Part number															
Example: SP-SSA-4141-WH (14-ft aluminum, 4" square, 11Ga., white pole)															
Form		Profile		Material		Size		Height†				Wall‡		Color	
Code	Desc.	Code	Desc.	Code	Desc.	Code	Desc.	Code	Desc.	Code	Desc.	Code	Desc.	Code	Desc.
S	Square	S	Straight sides	A	Aluminum	4	4"	8	8-ft	18	18-ft	1	1/8" wall / 11Ga.	BK	Black
R	Round	T	Tapered*	S	Steel	5	5"	10	10-ft	20	20-ft	3	3/16" wall or 7 Ga.	BZ	Bronze
						6	6"	12	12-ft	25	25-ft			WH	White
								14	14-ft	30	30-ft				
								15	15-ft	35	35-ft				
								16	16-ft						

Available accessories

Refer to product spec sheet for ordering numbers.

- Area light cross arms
- Pole top flood mount brackets
- Pole top reducers
- Cross arm brackets
- Spoke brackets
- Bull horns

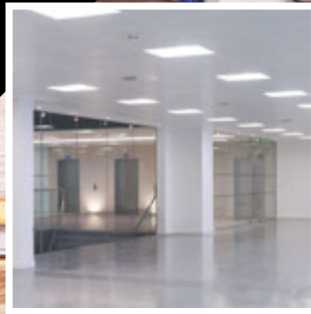
* Tapered poles by special quote only.
 † Height may be limited by material and wall thickness. Contact SloanLED for more information.

Indoor Commercial

SloanLED indoor commercial LED lighting systems use cutting edge LED technology to combine class-leading efficiency, performance, and value to create aesthetically pleasing retail interiors.



All SloanLED Lighting Systems products installed in the U.S. are protected by our **NEW Performance+ Service Warranty**. Visit product page for details



SHL2 Series Linear High Bay

Full body LED high bay

SHL2 Series Linear High Bay is designed for a wide range of applications and features various wattages, lumen outputs, surge protection options, and standard diffused lens making it the ideal 1-to-1 replacement or new project specification choice.

Ordering Information													
Part number													
Example: SHL2-320UF-50													
SHL2- <input type="text"/> - <input type="text"/> <input type="text"/> <input type="text"/> <input type="text"/> <input type="text"/>													
Power		Voltage		Diffuser		Color temp.		EM options		Sensor options		Surge protection options	
Code	Desc.	Code	Desc.	Code	Desc.	Code	Desc.	Code	Desc.	Code	Desc.	Code	Desc.
90	90 W	U	100-277 V (std.)	F	Frosted (std.)	40	4000 K	(blank)	None	(blank)	None	6K	6kV SPD (std.)
135	135 W	H	347-480 V	C	Clear	50	5000 K	EM12	1200 lm	MS1	PIR occ. sensor	10K [†]	10KV SPD
180	180 W							EC12	1200 lm (CA)	MS2	MW occ. sensor		
265	265 W							EM24	2400 lm				
320	320 W							EC24	2400 lm (CA)				

	90 W (87 W)		135 W (132 W)		180 W (175 W)		265 W (267 W)		320 W (320 W)	
Color temperatures (CCT)	4000 K	5000 K	4000 K	5000 K	4000 K	5000 K	4000 K	5000 K	4000 K	5000 K
Lumens	12,193	12,394	18,401	18,564	24,457	24,603	37,590	37,996	44,235	44,460
Efficacy [†]	135.5 lm/W	137.7 lm/W	136.3 lm/W	137.5 lm/W	135.9 lm/W	136.7 lm/W	141.8 lm/W	143.4 lm/W	138.2 lm/W	138.9 lm/W
Power factor	>0.90									
THD	<20%									
Color rendering (CRI)	>80									
Beam angle	100°									
Life rating	L70 @ 25° C per IES TM21-11; Tested: 54,000 hours; Calculated: 122,000 hours									
Dimming	0-10 VDC dimming standard									
Environment	UL Listed for damp locations									
Installation	Chain mounting standard (3-ft [0.9-m] chain and v-hook included)									

SHL2 Series Linear High Bay Accessories*

Pendant mount kit, small (90, 135, 180 W)	SHL2-PMK-12X23
Wire guard kit, small (90, 135, 180 W)	SHL2-WG-12X23
Pendant mount kit, med. (265 & 320 W)	SHL2-PMK-12X45
Wire guard kit, med. (265 & 320 W)	SHL2-WG-12X45
Cable mount kit, 10-ft (3-m) – ALL MODELS	SHL2-CMK3
Cable mount kit, 16.5-ft (5-m) – ALL MODELS	SHL2-CMK5
Surface mount kit – ALL MODELS	SHL2-SMK
Hand-held remote programmer MS2 sensor – ALL MODELS	MWAVEDHS-REM

* Accessories shipped alongside, not pre-assembled.
[†] Output performance shown using frosted diffuser.
[‡] 10kV models are not DLC listed.



Indoor SLVT Series

Linear Vapor Tight SLVT

The SLVT Series Linear Vapor Tight is a fully gasketed, wet location fixture, IP66-rated and is ideal for outdoor areas, canopies, locker rooms, cold storage, parking garages, warehouses, and more.

- Screwless, pressure wire connectors and easy, tool-free installation
- Class P power supply provides ease of maintenance and flexibility
- Pendant and surface mounting for convenient installation
- 0-10 V dimming standard, motion sense dimming optional



Wattage	2' x 2'			35 W			2' x 4'			75 W		
	25 W	3000 K	4000 K	5000 K	3000 K	4000 K	5000 K	3000 K	4000 K	5000 K	3000 K	4000 K
Color temp. (CCT)	3000 K	4000 K	5000 K	3000 K	4000 K	5000 K	3000 K	4000 K	5000 K	3000 K	4000 K	5000 K
System efficacy	121 lm/W	138 lm/W	136 lm/W	131 lm/W	140 lm/W	136 lm/W	131 lm/W	140 lm/W	136 lm/W	129 lm/W	136 lm/W	133 lm/W
Lumens	3,115	3,298	3,242	4,817	5,117	4,975	7,330	7,850	7,623	9,550	10,035	9,827

Ordering Information

Part number
Example: SLVT2425U-40T5WH-D1MS1

SLVT - U- WH-D1

Length		Input power		Kelvin temperature		Option 1		Option 2	
Code	Desc.	Code	Desc.	Code	Desc.	Code	Desc.	Code	Desc.
24	2-ft (0.6-m)	25	25 W	30	3000 K	MS1	Internal microwave sensor	EC8	8 W battery backup
48	4-ft (1.2-m)	35	35 W	40	4000 K				
				50	5000 K				

* 4' model may be ordered with both the internal microwave sensor (MS1) and the 8 W battery backup.
2' model may only be ordered with either the internal microwave sensor (MS1) OR the 8 W battery.

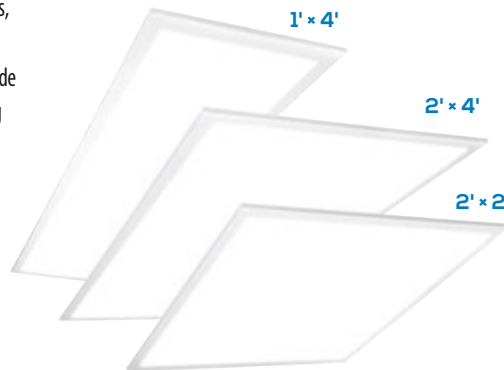
SloanLED Horizon

Premium backlit LED recessed luminaire

SloanLED Horizon, designed to provide quality illumination for schools, offices, healthcare facilities, retail, and other commercial spaces, features recessed, suspended, and surface mounting options for easy, secure installation in a wide range of applications. The fully-luminous lens, quality construction, dimming options, and superior efficacy make SloanLED Horizon the bright choice!

- Perfect fit for new construction or retrofit applications
- Available in 3500 K, 4000 K, and 5000 K
- 0-10 VDC dimming standard from 100% to 10% output
- Surface, Flange, and Cable mounting options available

* EC type emergency drivers are CEC T20 compliant for BC mark.
† 2' x 2' and 2' x 4' models only.



Emergency battery backup*

Part number	EM12/EC12	EM24/EC24	
EM lumens	2' x 2'	1006	2193
	2' x 4' (40 & 50 W)	1022	2227
Wattage		7.8 W	17.0 W
Runtime		90 minutes	

SloanLED Horizon Accessories

Surface mounting kits		
1' x 4'	2' x 2'	2' x 4'
LEDSMKT-14	LEDSMKT-22	LEDSMKT-24
Flange mounting kits		
1' x 4'	2' x 2'	2' x 4'
FLANGKIT14-ET	FLANGKIT22-ET	FLANGKIT24-ET
Cable mounting kit: LEDPNL-CMK		

System power	1' x 4'			2' x 2'			2' x 4'								
	32 W	3500 K	4000 K	5000 K	3500 K	4000 K	5000 K	40 W	3500 K	4000 K	5000 K	3500 K	4000 K	5000 K	
Color temperatures (CCT)	3500 K	4000 K	5000 K	3500 K	4000 K	5000 K	3500 K	4000 K	5000 K	3500 K	4000 K	5000 K	3500 K	4000 K	5000 K
Light output (Lumens)	4,124	4,147	4,169	4,174	4,234	4,293	5,274	5,330	5,385	7,217	7,330	7,442	7,330	7,442	7,442
Efficacy (lm/W)	128	129	129	129	131	134	131	132	134	131	133	135	133	133	135
Input voltage	120-277 VAC, 50-60 Hz														
Power factor	>0.90														
THD	<20%														
Beam angle	100°														
Color rendering (CRI)	>80														
Dimming	0-10 VDC dimming, current sinking														
Environment	cULus listed for damp locations, IC rated for insulation contact														
Life rating	L ₇₀ @ 25° C per TM21-11, 54,000 hours (reported), 144,000 hours (calculated)														

Ordering Information

Part number
Example: FP20-1248-3235V-EM12

FP20- V-

Size		Kelvin temperature		Emergency drivers†	
Code	Desc.	Code	Desc.	Code	Desc.
1248-32	1' x 4' (32 W)	35	3500 K	EM12	EM12
2424-32	2' x 2' (32 W)	40	4000 K	EC12*	CA T20
2448-40	2' x 4' (40 W)	50	5000 K	EM24	EM24
2448-55	2' x 4' (55 W)			EC24*	CA T20

Borealis

LED parabolic troffers
LCG-TF



2x2 (35 W) and
2x4 (48 W) models

The Borealis troffer family is designed as a budget-minded fixture to illuminate office, retail, healthcare, and educational applications. They are a direct drop-in replacement for 2' x 2' and 2' x 4' fluorescent troffers and offer standard and high-output lumen levels from their integrated power supply.

- Delivers uniform, general ambient light to interior spaces
- Highly efficient light engine delivers superior quality light
- Available in 3000 K, 3500 K, 4000 K and 5000 K
- 0-10 V dimming



Indoor

	2' x 2'	2' x 4'
System power	35 W	48 W
Input voltage	100-277 VAC, 50-60 Hz	
System efficacy	128 lm/W	
Light output	4,508 Lumens	6,136 Lumens
Beam angle	119°	
Color temperatures (CCT)	3000 K, 3500 K, 4000 K, 5000 K†	
Color rendering (CRI)	>80	
Color temperatures (CCT)	3000 K, 3500 K, 4000 K, 5000 K†	
Color rendering (CRI)	>80	
Finish	White polyester powder coat	

Ordering Information

Part number
Example: LCG-TF22-40W-U-40K-D1

LCG-TF- - -U- -D1

Size		Wattage		Kelvin temperature	
Code	Desc.	Code	Desc.	Code	Desc.
22	2' x 2'	35W	35 W	35K	3500 K
24	2' x 4'	48W	48 W	40K	4000 K
				50K	5000 K†

Borealis Accessories

Battery backup		
Wattage	Fixture wattage	Part number
16 W	35 W & 40 W	EM-L1654
25 W	48 W	EM-L2554

* Available by special order, please contact SloanLED for lead times.
† 5000 K only available on 40 W fixtures.

Daybreak

LED comfort luminaires
LCG-TR



Daybreak recessed luminaires are designed to provide improved visual comfort promoting a healthy and productive environment. The center illuminated optic provides direct illumination while the two-side wing panels provide comfortable, indirect illumination.

- Available in 3500 K, 4000 K, and 5000 K
- CRI 80+
- EM battery backup available
- 0-10 V dimming standard, dims to 10%



Battery backup

Part number	Wattage	Fixture wattage
EM-L1654/EM12/EC12	16 W	40 W
EM-L2554/EM24/EC24	25 W	60 W

	2' x 2'		2' x 4'	
System power	40 W	40 W	62 W	
Input voltage	100-277 VAC, 50-60 Hz			
System efficacy	117 lm/W	114 lm/W	115 lm/W	
Light output	4,441 Lumens	4,443 Lumens	7,068 Lumens	
Beam angle	90°			
Color temperatures (CCT)	3500 K, 4000 K, 5000 K			
Color rendering (CRI)	80			
Dimming	0-10 V dimming standard, dims to 10%			
Finish	White polyester powder coat			

Ordering Information

Part number
Example: LCG-TR22-40W-U-40K-D1

LCG-TR -D1-

Size		Wattage		Input		Kelvin temperature		Emergency drivers	
Code	Desc.	Code	Desc.	Code	Desc.	Code	Desc.	Code	Desc.
22	2' x 2'	40W	40 W	U	100-277 V	35K	3500 K	EM12	
24	2' x 4'	40W	40 W	H	347-480 V	40K	4000 K	EC12	CAT20
		62W	62 W			50K	5000 K	EM24	
								EC24	CAT20
								EM-L1654	
								EM-L2554	

Area 51

LED die-cast UFO high bay
LCG-UFO

The Area 51 high bay fixture is designed for the high-performance lighting of warehouse, manufacturing, and indoor and outdoor area lighting.

- Die-cast high-performance magnesium body is more lightweight and runs cooler than aluminum
- Three lumen outputs from 15,000 lm to 28,000 lm to meet the requirements of most applications
- Spun aluminum shade option can be used to guard against glare in lower height installations
- 1-10 V dimming driver is standard
- Optional occupancy sensor available



Area 51 Accessories

Shade accessory*
LCG-UFO-AL

System power	100 W	150 W	200 W
Input voltage	120-277 VAC and 200-480 VAC*		
System efficacy	150 lm/W	140 lm/W	140 lm/W
Power factor	>0.95		
Light output	15,000 Lumens	21,000 Lumens	28,000 Lumens
Color temperatures (CCT)	4000 K, 5000 K		
Color rendering (CRI)	>70		
Dimming	1-10 VDC control on power supply		
Ingress protection	IP65		
UL location rating	Suitable for wet locations		
Life rating	>50,000 hours (L ₇₀)		
Finish	Black and White† polyester powder coat		

Ordering Information

Part number
Example: LCG-UFO-150W-U-40K-BK-D1

LCG-UFO- - - - -D1

Wattage		Voltage		Kelvin temperature		Finish	
Code	Desc.	Code	Desc.	Code	Desc.	Code	Desc.
100W	100 W	U	120-277 VAC	40K	4000 K	BK	Black
150W	150 W	H	200-480 VAC†	50K	5000 K	WT	White†
200W	200 W						

* Available by special order, please contact SloanLED for lead times.

† Shade fits 100 W unit only.

Achieve Round High Bay

High performance round high bay
SRHB



Achieve Round High Bay was designed not only to deliver superior illumination but to exceed its 10-year warranty and lifespan, so you can turn it on and leave it on.

- Rugged, die-cast construction for corrosion-resistant life
- Three lumen packages to choose from: 12,359; 21,058; and 29,410 lumens*
- Four reflector options available for superior application performance
- 150,000 hours calculated life
- 10 kV surge protection standard

Model	100 W	166 W	245 W
Input voltage	120-277 VAC standard, 347-480 VAC optional*		
System efficacy	127 lm/W	127 lm/W	120 lm/W
Power factor	>0.9		
Light output*	12,359 Lumens	21,058 Lumens	29,410 Lumens
Color temperatures (CCT)	4000 K, 5000 K		
Color rendering (CRI)	>80		
Dimming	1-10 VDC, 100% to <10%		
Ingress protection	IP65		
UL location rating	Suitable for wet locations		
Life rating	L ₇₀ @ 50° C ambient >150,000 calculated hours per TM21-11		
Finish	Gray*		

Ordering Information

Part number
Example: SRHB-245-U-50T5GY-D1-S1EM20

SRHB- - - T5GY-D1- -

Wattage		Voltage		Kelvin temp.		Options†		Emergency‡	
Code	Desc.	Code	Desc.	Code	Desc.	Code	Desc.	Code	Desc.
100	100 W	U	120-277 VAC	40	4000 K	(blank)	None	(blank)	None
166	166 W	H	347-480 VAC*	50	5000 K	S1‡§	Microwave sensor fixture mount	EC20	20 W, battery backup, CEC
245	245 W					S2‡§	Microwave sensor reflector mount	EM20	20 W battery backup

Achieve Round High Bay Accessories



Bell reflector, acrylic
SRHB-AC

Bell reflector, aluminum
SRHB-AL

16" Flat glass and clamp band
SRHB-FG

16" Wire guard
SRHB-WG

16" PC low-profile conical lens and clamp band
SRHB-FA

16" PC deep-profile conical lens and clamp band
SRHB-Y

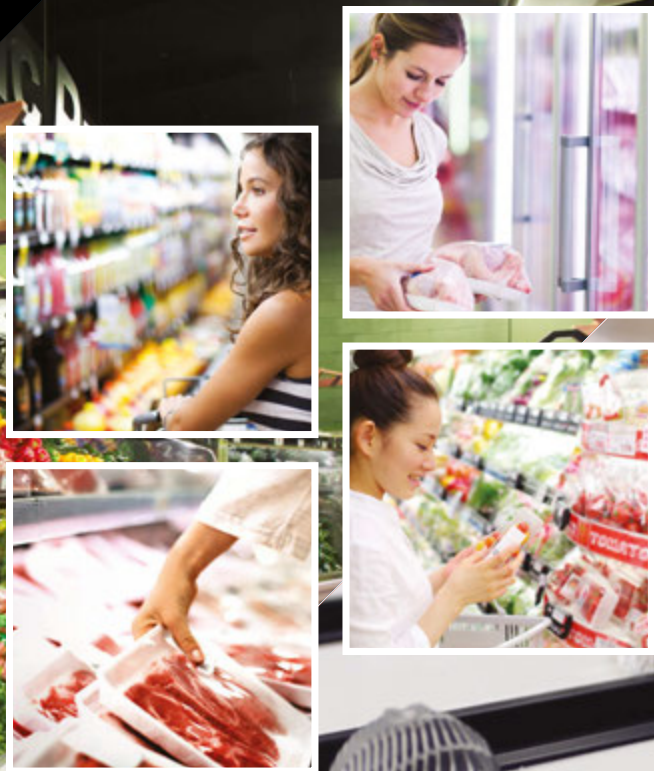
Pendant mount accessory
SRHB-P

Specifications subject to change without notice.

* Contact SloanLED sales for options.
† Sold separately.
‡ Sensors are factory wired and field installed.
§ For factory default, see Sensor Control Options on product spec sheet. Visit SloanLED.com for more information.
¶ 347-480 V is not DLC approved.
Δ Not all configurations meet DLC Premium classification.

Refrigerated Display

Cold Series™ refrigerated display LED lighting systems use cutting edge LED technology to combine efficiency, performance, and value for state of the art merchandising.



All SloanLED Lighting Systems products installed in the U.S. are protected by our **NEW Performance+ Service Warranty**.
[Visit product page for details](#)

Cold Deck FIT

LED lighting system for multi-deck merchandisers



Cold Deck FIT lighting system is designed to optimize visual appeal of produce, meat, and dairy cases (multi-deck merchandisers). Extends shelf life of perishables through reduced heat output.

- Illuminates product facings with crisp, uniform light dispersion
- Optimize visual appeal and color accuracy of meat products with new "Prime" meat-tuned LED chip
- Waterproof (IP68) for produce "wet zones" or spray down maintenance of display cases
- **Up to 77% energy savings compared with typical fluorescent fixtures**

Cold Door 3

LED lighting system for cooler doors



Cold Door 3 LED lighting system is highly adaptable for varying case styles and shelf depths, and provides crisp, uniform illumination across doors for walk-in coolers/freezers, and remote glass door reach-ins.

- **Performance** (4000 K and 5000 K color temperatures, comes in lengths for 4', 5', 6', and 7' doors) and **ECO** (3500 K, 4000 K and 5000 K color temperatures, comes in lengths for 5', 6', and 7' doors) models available
- Delivers bright, uniform light, vibrant color, and reduced glare to product facings at depths as shallow as 2" (50 mm)
- Optional wing accessories conceal light source from consumers
- **Up to 85% energy savings compared with typical fluorescent fixtures**

24 VDC Power Supplies – Compatible with SloanLED 24 VDC Refrigerated Display products



Model	Part number	Dimensions	Nominal input voltage	Max. input current	Power output	Location rating	Operating temperature	Protection class
100L1(D) 100 W <i>Dimming and non-dimming</i>	701895-100L1(D)	9.5 in × 1.7 in × 1.0 in (241 mm × 43 mm × 25 mm)	120-277 VAC, 50-60 Hz	0.95 A	100 W @ 24 VDC, Class 2 output	Dry and damp locations	-40° C to +60° C, derate to 50% of max load at +60° C	IP54

Cold Deck FIT		1' (0.3 m)	3' (0.9 m)	4' (1.2 m)	
Input voltage		100-240 VAC, 50-60 Hz			
Output voltage		24 VDC, Class 2 low voltage			
Fixture power	Canopy	2.3 W	9.0 W	11.3 W	
	Shelf	1.1 W	3.4 W	4.5 W	
Illuminance	2700 K	Canopy	241	963	1204
		Shelf	137	410	547
	3500 K	Canopy	266	1063	1329
		Shelf	153	797	611
	4000 K	Canopy	276	1104	1380
		Shelf	158	472	630
	Prime	Canopy	N/A	N/A	630
		Shelf			313
Color temperatures (CCT)		2700 K, 3500 K, 4000 K, Prime (meat-tuned) [†]			
Color rendering (CRI)		>80			
Dimming		Optional Motion Sensing [‡]			
Ingress protection		IP68 (highest dust and water protection)			
Life rating		>60,000 hours (L ₉₀) [§]			
Body color		Smooth white			

Ordering Information

Part number
Example: 701940-4WC4F1

701940- - - F1

Kelvin temperature		Type		Length	
Code	Desc.	Code	Desc.	Code	Desc.
MW	Prime (meat-tuned) [*]	C	Canopy	1	1-ft (0.3-m)
2W	2700 K	S	Shelf	3	3-ft (0.9-m)
3W	3500 K			4	4-ft (1.2-m)
4W	4000 K				

Cold Deck FIT Accessories[§]

Stand-off clip	401091
5 clip spanner wrenches	401368-5
Small terminal block	401350
Large terminal block	401351

Cold Deck FIT Dimming

Dimming controller	701890-PWR
Occupancy sensor, Standard [¶]	400661
Occupancy sensor, Wide [¶]	400964

Cold Door 3, Performance

		4' (1.2 m)	5' (1.5 m)	6' (1.8 m)	7' (2.1 m)
Input voltage		100-240 VAC (to power supply)			
Fixture voltage		24 VDC			
Total lumens [¶]	Center	1280	1547	1813	1947
	End	880	1063	1247	1338
System power	Center	12.4	15.5	18.1	19.3
	End	8.1	10.5	11.6	12.6
Calculated system efficacy	Center	103	100	100	101
	End	109	102	108	106
Lumens/ft (nominal)	Center	320			
	End	220			
Color temperatures (CCT)		3500K, 4000 K, 5000 K			
Color rendering (CRI)		>80			
Life rating		>60,000 hours (L ₉₀) at maximum operating conditions [§]			
Dimming		Optional Motion Sensing [‡]			
Body color		Black			

Ordering Information

Part number
Example: 701906-4WC4X3

701906-

Kelvin temperature		Type		Length (nominal)	
Code	Desc.	Code	Desc.	Code	Desc.
3W	3500 K	C	Center	4X3	4-ft (1.2-m)
4W	4000 K	E	End	5X3	5-ft (1.5-m)
5W	5000 K			6X3	6-ft (1.8-m)
				7X3	7-ft (2.1-m)

Cold Door 3 Accessories[§]

	Two pack	Bulk
Snap-in clip [¶]	401943-2	401943-24
4' Invisibility Light Guard [¶]	402074-46-2	402074-46-12
5' Invisibility Light Guard [¶]	402074-56-2	402074-56-12
6' Invisibility Light Guard [¶]	402074-66-2	402074-66-12
7' Invisibility Light Guard [¶]	402074-71-2	402074-71-12
4' End Reflector [¶]	402074-46-EC-2	402074-46-EC-12
5' End Reflector [¶]	402074-56-EC-2	402074-56-EC-12
6' End Reflector [¶]	402074-66-EC-2	402074-66-EC-12
7' End Reflector [¶]	402074-71-EC-2	402074-71-EC-12

Cold Door 3 Dimming

Dimming controller [¶]	701890-PWR
Occupancy sensor, Standard	400661
Occupancy sensor, Wide [¶]	400964

- * Prime available in 4' (1.2 m) length only.
- † Based on LED component manufacturer data.
- ‡ See Cold Series Dimming Control data sheet.
- § Six (6) clips included with each canopy light to space by 1/2" (13 mm) or angle by 10°. Additional clips may be used to increase spacing and/or angle (see install guide). Additional clips may also be used to angle shelf lights if desired. Screws not included for fastening to non-magnetic shelves.
- ¶ May require an L-bracket (not included) for mounting.
- Δ Alternative for 400661. Cat 5 cabling to the sensor not included.
- ◇ Calculated from LM80 data.
- ¥ Bulk package includes 24 clips
- ⊞ Bulk package includes 12 pieces.
- Ⓢ Also functions as a power controller, replacing P/N 701929 when dimming is specified. Use with 701895-24W power supply.

Cold Door 3, ECO		5' (1.5 m)	6' (1.8 m)	7' (2.1 m)
Input voltage		100-240 VAC (to power supply)		
Fixture voltage		24 VDC		
Total lumens ^d	Center	1280	1547	1813
	End	880	1063	1247
System power	Center	12.4	15.5	18.1
	End	8.1	10.5	11.6
Calculated system efficacy	Center	103	100	100
	End	109	102	108
Lumens/ft (nominal)	Center	320		
	End	220		
Color temperatures (CCT)		4000 K, 5000 K		
Color rendering (CRI)		>80		
Life rating		>60,000 hours (L ₉₀) at maximum operating conditions ^e		
Dimming		Optional Motion Sensing ^f		
Body color		Black		

Ordering Information					
Part number					
Example: 701906-4WCSV3					
701906-	<input type="text"/>	<input type="text"/>	<input type="text"/>	<input type="text"/>	<input type="text"/>
Kelvin temperature		Type		Length (nominal)	
Code	Desc.	Code	Desc.	Code	Desc.
3W	3500 K	C	Center	5V3	5-ft (1.5-m)
4W	4000 K	E	End	6V3	6-ft (1.8-m)
5W	5000 K			7V3	7-ft (2.1-m)

Cold Door 3 Accessories ^a	Two pack	Bulk
Snap-in clip ^a	401943-2	401943-2
4' Invisibility Light Guard ^a	402074-2	402074-46-12
5' Invisibility Light Guard ^a	402074-56-2	402074-56-12
6' Invisibility Light Guard ^a	402074-66-2	402074-66-12
7' Invisibility Light Guard ^a	402074-76-2	402074-76-12
4' End Reflector ^a	402074-46-EC-2	402074-46-EC-12
5' End Reflector ^a	402074-56-EC-2	402074-56-EC-12
6' End Reflector ^a	402074-66-EC-2	2 402074-66-EC-12
7' End Reflector ^a	402074-76-EC-2	402074-76-EC-12

Cold Door 3 Dimming	
Dimming controller ^a	701890-PWR
Occupancy sensor, Standard	400661
Occupancy sensor, Wide ^f	400964

Manage foot traffic with Simple Safety Solutions from SloanLED

The SloanLED Touchless Occupancy Indicator System helps guests to avoid lines and practice proper social distancing by providing a visual indication at entry doors of when a space is in use or available, allowing visitors to feel safe and confident in your establishment.



Touchless Occupancy Indicator System

Ceiling and wall mount systems



- Ideal for restrooms, shared office spaces, and anywhere social distancing should be encouraged
- Reopen with confidence
- Give visitors a sense of safety
- Manage foot traffic and avoid long lines



601147
Wall mount sensor

601153
Ceiling mount sensor

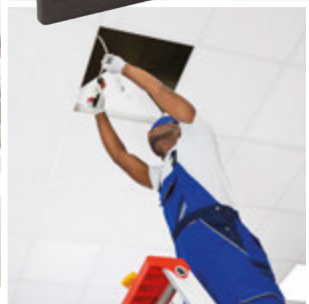
Indicator light (Wall mount kit) (Ceiling mount kit)
601151 Red/Green indicator 601149 Red/Green indicator

Contractor Essentials™

SloanLED simplifies the selection of everyday commercial lighting products with our Contractor Essentials program, covering the gamut of commercial projects, from a name you can trust.



All SloanLED Lighting Systems products installed in the U.S. are protected by our **NEW Performance+ Service Warranty**.
Visit product page for details



The lighting you need when you need it.

Contractor Essentials™ SHL2 Linear High Bays

LED full-body high bays

- 0-10 VDC dimming standard
- Frosted diffuser standard, clear diffuser optional
- Wire guard, cable hanging, surface mount, and pendant mount accessories available
- California T20 BC compliant battery backup available
- California T20 occupancy sensors available
- Standard 6 kV and optional 10 kV surge protection



SHL2 Linear High Bays		90 W (87 W)	135 W (132 W)	180 W (175 W)	265 W (267 W)	320 W (320 W)
Lumens	4000 K	12,193	18,401	24,457	37,590	44,235
	5000 K	12,394	18,564	24,603	37,996	44,460
Efficacy*	4000 K	135.5 lm/W	136.3 lm/W	135.9 lm/W	141.8 lm/W	138.2 lm/W
	5000 K	137.7 lm/W	137.5 lm/W	136.7 lm/W	143.4 lm/W	138.9 lm/W
Input voltage		120-277 VAC, 50-60 Hz (std.); 347-480 VAC, 50-60 Hz (optional)§				
Color rendering (CRI)		>80				
Dimming		0-10 V dimming standard				
Surge protection		6 kV standard, 10 kV optional				
Environment		cULus Listed for damp locations				
Life rating		L ₇₀ @ 25° C per IES TM21-11; >54,000 hours reported; 122,000 hours calculated				

Ordering Information

Part number

Example: SHL2-320UF-50EC12MS16KV

SHL2- -

Power	
Code	Desc.
90	90 W
135	135 W
180	180 W
265	265 W
320	320 W

Voltage	
Code	Desc.
U	100-277 V (std.)
H	347-480 V

Diffuser	
Code	Desc.
F	Frosted (std.)†
C	Clear‡

Color temp. (CCT)	
Code	Desc.
40	4000 K
50	5000 K

EM options	
Code	Desc.
(blank)	None
EM12	1200 lm
EC12	1200 lm (CA)
EM24	2400 lm
EC24	2400 lm (CA)

Sensor options	
Code	Desc.
(blank)	None
MS1	PIR occ. sensor
MS2	Microwave occ. sensor

Surge protection	
Code	Desc.
6KV	6 kV SPD (std.)
10KV†	10 kV SPD sensor

* Lumens were calculated with no lens.
† 10 kV models are not DLC listed.
‡ Per DLC V4.4, all products are DLC-P. Per DLC V5.0 frosted diffuser compliant to all DLC Standard. Clear diffuser compliant to DLC Premium.
§ 347-480 VAC fixture utilizes Step Down Transformers.

Contractor Essentials™
LEDHBR Round High Bays
 LED high bays



Image shown with optional yoke arm and occupancy sensor.

- Perfect fit for new construction or retrofit applications
- Easy installation
- Watertight, compression-type electrical connectors prevent moisture intrusion
- 0-10 VDC dimming standard
- Acrylic and aluminum refractor options
- Motion and daylight sensor option

LEDHBR Round High Bays		100 W	150 W	200 W	239 W
Light output†	4000 K	13,961 Lumens	20,799 Lumens	27,415 Lumens	32,727 Lumens
	5000 K	13,950 Lumens	20,624 Lumens	27,169 Lumens	32,250 Lumens
Efficiency	4000 K	140 lm/W	139 lm/W	137 lm/W	137 lm/W
	5000 K	140 lm/W	137 lm/W	136 lm/W	135 lm/W
Input voltage	120-277 VAC and 347-480 VAC, 50-60 Hz				
Color rendering (CRI)	>80				
Dimming	0-10 V dimming standard				
Environment	cULus wet location				
Life rating	L ₇₀ @ 25° C per IES TM21-11; >50,000 hours reported; 141,000 hours calculated (120-277 VAC); 205,000 hours estimated (347-480 VAC)				
Finish	White powder coat				

Ordering Information

Part number
 Example: LEDHBR-27-5K-PRM-BLK-UNV-OS

-PRM-BLK-

Input		Wattage‡		Color temp. (CCT)		Driver		Option	
Code	Desc.	Code	Desc.	Code	Desc.	Code	Desc.	Code	Desc.
LEDHBR	120-277 VAC	14	100 W	4K	4000 K	UNC	347-480 V	(blank)	Non sensor
LEDHBRS	347-480 VAC	21	150 W	5K	5000 K	UNV	120-277 V	OS*	Occ. & daylight sensor
		27	200 W						
		32	239 W						

* Minimum ambient operating temp with optional occupancy sensor is -13° F (-25° C).
 † Based on 120-277VAC. For 347-480 VAC output, please contact SloanLED.
 ‡ In 347 V, 14 = 102 W, 21 = 151 W, 27 = 200 W, 32 = 243 W.

Contractor Essentials™
HBRE Economy Round High Bays
 LED high bays



- Easy installation in new construction or retrofit applications
- Watertight, compression-type electrical connectors prevent moisture intrusion
- 0-10 VDC dimming standard
- 4 kV surge protection standard
- 6-ft (1.8-m) AC power cord standard

HBRE Eco. Round High Bays		102 W	150 W	200 W	241 W
Lumens	120 V	14,497 (4000 K)	20,859 (4000 K)	28,341 (4000 K)	33,552 (4000 K)
	277 V	14,864 (5000 K)	21,406 (5000 K)	28,948 (5000 K)	34,240 (5000 K)
Efficiency	120 V	142 lm/W	139 lm/W	142 lm/W	139 lm/W
	277 V	146 lm/W	142 lm/W	145 lm/W	142 lm/W
Input voltage	120-277 VAC				
Color rendering (CRI)	≥80				
Color temperatures (CCT)	4000 K, 5000 K				
Dimming	0-10 V dimming standard				
Surge protection	4 kVA standard				
Environment	cULus wet location				
Life rating	174,000 hours reported per TM21-11				
Finish	Black				

Ordering Information

Part number
 Example: HBRE-14L-4K

HBRE- -

Lumens		Color temp. (CCT)	
Code	Desc.	Code	Desc.
14L	14,000	4K	4000 K
21L	21,000	5K	5000 K
28L	28,000		
34L	34,000		

Contractor Essentials™

CPLED Parking Garage Luminaires

LED canopy luminaires



- 171,000 hours calculated life
- Diecast housing and polycarbonate lens
- 4 kV surge protection standard, 10 kV SPD optional
- Optional occupancy/daylight sensor
- Suitable for parking garages, covered eating area canopies, and pedestrian canopies

CPLED Parking Garage Luminaires

		40 W	56 W	102 W
Light output	4000 K	4,943 Lumens	7,002 Lumens	12,516 Lumens
	5000 K	5,024 Lumens	7,077 Lumens	12,708 Lumens
Efficiency	4000 K	124 lm/W	125 lm/W	123 lm/W
	5000 K	126 lm/W	126 lm/W	125 lm/W
Input voltage	120-277 VAC, 50-60 Hz			
Beam angle	140°			
Color rendering (CRI)	>80			
Dimming	0-10 VDC control on power supply			
Surge protection	4 kV standard, 10 kV SPD optional			
UL location rating	cULus listed for wet locations			
Life rating	L ₇₀ @ 25° C per TM21-2008; >50,000 hours reported; 171,000 hours calculated			
Finish	Bronze or White powder coating			

Ordering Information

Part number

Example: CPLED-13-4K-WHT-UNV-OS

* DLC Classified as "Parking Garage" distribution.

CPLED- - - -UNV-

Wattage		Color temp. (CCT)		Finish		Options	
Code	Desc.	Code	Desc.	Code	Desc.	Code	Desc.
5	40 W	4K	4000 K	BRZ	Bronze	(blank)	No sensor
7	56 W	5K	5000 K	WHT	White	OS	Occ. & daylight sensor
13	102 W					SP10	10 kV Surge protector
						OS-SP10	Motion sensor & 10 kV SPD

Contractor Essentials™

BWALED Utility Wraps

LED wrap luminaires



- Perfect fit for new construction or retrofit applications
- Uniform illumination with no visible LED pixelation
- Steel endcaps with knockouts for surface and feed thru wiring
- 0-10 VDC dimming standard

BWALED Utility Wraps

Light output	3500 K	4,771 Lumens
	4000 K	5,200 Lumens
	5000 K	5,240 Lumens
Efficacy	3500 K	119 lm/W
	4000 K	130 lm/W
	5000 K	131 lm/W
Input voltage	120-277 VAC, 50-60 Hz	
Beam angle	100°	
Color rendering (CRI)	>80	
Environment	cULus approved for damp locations	
Surge protection	2.5 kV standard	
Dimming	0-10 VDC dimming standard	
Life rating	L ₇₀ @ 25° C per IES TM21-11; >50,000 hours reported; 122,000 hours calculated	

Ordering Information

Part number

Example: BWALED4FT-40-4KMV-ET

BWALED4FT-40- MV-ET

Color temp. (CCT)	
Code	Desc.
35K	3500 K
4K	4000 K
5K	5000 K

Contractor Essentials™

GRPL Bollards

LED bollards

- Indirect specular cone reflector and optional internal louvers
- High impact, UV resistant polycarbonate lens
- Aluminum alloy body
- 150,000 hours calculated life



Ordering Information

Part number

Example: GRPL-5510-20W-U7-30-BZ-TV

GRPL- - -U7- -BZ-TV

Model		Wattage		Color temp. (CCT)	
Code	Desc.	Code	Desc.	Code	Desc.
5510	Full lens	20W	20 W	30	3000 K
5520	Louvered	30W	30 W	40	4000 K
				50	5000 K

GRPL Bollards

		GRPL-5510	GRPL-5520
Light output*	20 W	2,546 Lumens	706 Lumens
	30 W	3,410 Lumens	1,231 Lumens
Efficiency†	20 W	129 lm/W	37 lm/W
	30 W	116 lm/W	42 lm/W
Input voltage	120-277 VAC, 50-60 Hz		
Color temperatures (CCT)	3000 K, 4000 K, 5000 K		
Color rendering (CRI)	>70		
Dimming	0-10 V standard		
Surge protection	4 kV standard		
UL location rating	UL and cULus approved for wet locations		
Life rating	L ₇₀ @ 25° C per TM21-11; 54,000 hours reported; >150,000 hours calculated		
Finish	Bronze		

* Based on 5000 K CCT.

† DLC Premium does not apply to 5510 3000 K model or any 5520 models.

WLE Economy Wraps

LED wrap luminaires

- Perfect fit for new construction or retrofit applications
- Includes round cover for wall or ceiling mounting to junction box
- Available in 3000 K, 4000 K, and 5000 K
- 147,000 hours calculated life



WLE Economy Wraps

	3000 K	4000 K	5000 K
Light output	4,034 Lumens	4,119 Lumens	4,203 Lumens
Efficacy	116 lm/W	118 lm/W	120 lm/W
Input voltage	120-277 VAC, 50-60 Hz		
System power	35 W		
Beam angle	165°		
Color rendering (CRI)	>80		
Surge protection	1.0 kV standard		
Environment	cULus approved for damp locations		
Light guide lens	Polycarbonate lens		
Life rating	L ₇₀ @ 25° C per TM21-11; >50,000 hours reported; 147,000 hours calculated		
Finish	White powder coating		

Ordering Information

Part number
Example: WLE-4FT-40L-4K

WLE-4FT-40L-

Color temp. (CCT)	
Code	Desc.
3K	3000 K
4K	4000 K
5K	5000 K

WPA Wall Packs

LED adjustable wall packs

- Heavy-duty, spring-loaded hinge provides vertical adjustability of the luminaire housing up to 90°
- Adjustability allows for full cut-off through forward throw patterns
- Uniform illumination, no visible LED pixelation
- Complies with EN61000-4-5, surge immunity (2 kV)



WLE Economy Wraps

	23 W	37 W
Light output (nominal)*	2,680 Lumens	4,234 Lumens
Efficacy*	>118 lm/W	
Input voltage	120-277 VAC, 50-60 Hz	
Input current	120 V - 0.19, 240 V - 0.10, 277 - 0.08	120 V - 0.31, 240 V - 0.16, 277 - 0.13
Beam angle	110°	
Color rendering (CRI)	>80	
Surge protection	2 kV standard	
Ingress protection	IP65	
Life rating	L ₇₀ @ 25° C per TM21-2008; 50,000 hours tested; 56,000 hours calculated	
Dimming	0-10 VDC dimming	
Finish	Dark bronze powder coat	

Ordering Information

Part number
Example: WPA-3L-5K

* Based on 4000 K CCT.

WPA- -

Lumens		Color temp. (CCT)	
Code	Desc.	Code	Desc.
3L	3000L	4K	4000 K
4L	4000L	5K	5000 K

LEDWPA Wall Packs

LED adjustable wall packs

- LED modules can be independently aimed, 175° up/down, 350° rotation each module
- Capable of up/down wall grazing
- Bright, uniform illumination
- Rugged diecast body and polycarbonate lens
- Seamless lens gasket prevents water intrusion



LEDWPA Wall Packs

		25 W	40 W	60 W†
Lumens	4000 K	3,325	5,238	7,809
	5000 K	3,280	5,131	7,854
Efficacy	4000 K	133 lm/W	131 lm/W	128 lm/W
	5000 K	131 lm/W	128 lm/W	129 lm/W
Beam		100°		
Color rendering (CRI)		>70		
cULus location rating		Listed for wet locations		
Ingress protection		IP65		
Life rating		L ₇₀ @ 25° C per IES TM21-11; 50,000 hours reported; 61,000 hours calculated		
Finish		Dark bronze powder coat		

Ordering Information

Part number
Example: LEDWPA60W-5K

† 60 W model not DLC listed.

LEDWPA -

System power		Color temp. (CCT)	
Code	Desc.	Code	Desc.
25W	25 W	4K	4000 K
40W	40 W	5K	5000 K
60W	60 W†		

Contractor Essentials™ PNL Standard Backlit Panels

LED recessed luminaires



- Perfect fit for new construction or retrofit applications
- Available in 3500 K, 4000 K, and 5000 K
- 0-10 VDC dimming standard, dims to 10%
- 144,000 hours calculated life
- Surface, Flange, and Suspended mounting accessories available
- Emergency battery backup accessories available

PNL Standard Backlit Panels

		2' x 2', 36 W	2' x 4', 44 W
Light output	3500 K	4,259 Lumens	5,240 Lumens
	4000 K	4,354 Lumens	5,282 Lumens
	5000 K	4,449 Lumens	5,323 Lumens
Efficacy	3500 K	118 lm/W	120 lm/W
	4000 K	121 lm/W	121 lm/W
	5000 K	123 lm/W	122 lm/W
Input voltage	120-277 VAC, 50-60 Hz		
Beam	115°		
Color rendering (CRI)	>80		
Environment	Damp location, IC rated for insulation contact		
Dimming	0-10 VDC dimming standard, dims to 10%		
Life rating	L ₇₀ @ 25° C per IES TM21-11; >50,000 hours reported; 144,000 hours calculated		
Finish	White powder coat		

Ordering Information

Part number
Example: PNL2X4-50L-5K

PNL - -

* EC emergency drivers are California Energy Commission (CEC) listed.

Configuration		Color temp. (CCT)		Emerg. drivers	
Code	Desc.	Code	Desc.	Code	Desc.
2X2-40L	2' x 2' @ 36 W	35K	3500 K	(blank)	No EM
2X4-50L	2' x 4' @ 44 W	4K	4000 K	EM12	
		5K	5000 K	EC12*	CA T20
				EM24	
				EC24*	CA T20

Contractor Essentials™ FP20 Premium Backlit Panels

LED recessed luminaires



- Perfect fit for new construction or retrofit applications
- Available in 3500 K, 4000 K, and 5000 K
- 0-10 VDC dimming standard, dims to 10%
- 144,000 hours calculated life
- Surface, Flange, and Suspended mounting accessories available
- Emergency battery backup accessories available

FP20 Premium Backlit Panels

		1' x 4', 32 W	2' x 2', 32 W	2' x 4', 40 W	2' x 4', 55 W
Light output	3500 K	4,124 Lumens	4,174 Lumens	5,274 Lumens	7,217 Lumens
	4000 K	4,147 Lumens	4,234 Lumens	5,330 Lumens	7,330 Lumens
	5000 K	4,169 Lumens	4,293 Lumens	5,385 Lumens	7,442 Lumens
Efficacy	3500 K	128 lm/W	129 lm/W	131 lm/W	131 lm/W
	4000 K	129 lm/W	131 lm/W	132 lm/W	133 lm/W
	5000 K	129 lm/W	134 lm/W	134 lm/W	135 lm/W
Input voltage	120-277 VAC, 50-60 Hz				
Beam	100°				
Color rendering (CRI)	>80				
Environment	cULus listed for damp locations, IC rated for insulation contact				
Dimming	0-10 VDC dimming standard				
Life rating	L ₇₀ @ 25° C per IES TM21-11; 54,000 hours reported; 144,000 hours calculated				
Finish	White powder coat				

Ordering Information

Part number
Example: FP20-1248-32-35-EM12

PNL - -

† EC emergency drivers are California Energy Commission (CEC) listed.
‡ 2' x 2' and 2' x 4' models only.

Configuration		Color temp. (CCT)		Emerg. drivers†	
Code	Desc.	Code	Desc.	Code	Desc.
1248-32	1' x 4' @ 32 W	35	3500 K	EM12	
2424-32	2' x 2' @ 32 W	40	4000 K	EC12‡	CA T20
2448-40	2' x 4' @ 40 W	50	5000 K	EM24	
2448-55	2' x 4' @ 55 W			EC24‡	CA T20

CB Troffers

LED low-profile center-basket troffers

- Perfect fit for new construction or retrofit applications
- Long lasting, energy efficient system delivers up to 135 lumens per watt
- Available in 3500 K, 4000 K, and 5000 K
- 0-10 VDC Dimming standard
- 144,000 hours calculated life
- Plaster/drywall flange, surface, and cable mount kits available



CB Troffers		2' x 2', 24 W	2' x 4', 33 W
Light output	3500 K	3,096 Lumens	4,538 Lumens
	4000 K	3,192 Lumens	4,562 Lumens
	5000 K	3,212 Lumens	4,605 Lumens
Efficacy	3500 K	130 lm/W	137 lm/W
	4000 K	134 lm/W	138 lm/W
	5000 K	135 lm/W	139 lm/W
Input voltage	120-277 VAC, 50-60 Hz		
Beam	90°		
Color rendering (CRI)	≥80		
Environment	UL rated for damp locations, IC rated for insulation contact		
Dimming	0-10 VDC dimming standard		
Life rating	L ₇₀ @ 25° C per IES TM21-11; >50,000 hours reported; 144,000 hours calculated		
Finish	White powder coat		

Ordering Information

Part number
Example: CB22-3L-35K-PRM-ODS-EM24

CB - -PRM- -

* EC type emergency drivers are CEC T20 compliant for BC mark.

Length		Color temp. (CCT)		Occupancy sensor		Emerg. drivers	
Code	Desc.	Code	Desc.	Code	Desc.	Code	Desc.
22-3L	2' x 2'	35K	3500 K	(blank)	No occupancy sensor	(blank)	No EM
24-5L	2' x 4'	4K	4000 K	ODS	Microwave	EM12	
		5K	5000 K			EC12*	CA T20
						EM24	
						EC24*	CA T20

SL Strip Lights

LED strip lights

- Easy installation in new construction or retrofit
- Uniform illumination with no visible LED pixelation
- 0-10 VDC dimming standard



SL Strip Lights	2-ft (0.6-m), 20 W	3-ft (0.9-m) [†] , 25 W	4-ft (1.2-m), 35 W	8-ft (2.4-m), 65 W
Light output [‡]	2,540 Lumens	3,333 Lumens	4,600 Lumens	8,765 Lumens
Efficacy	129 lm/W	135 lm/W	134 lm/W	138 lm/W
Input voltage	120-277 VAC, 50-60 Hz			
Color rendering (CRI)	>80			
Environment	UL rated for damp locations			
Dimming	0-10 VDC dimming standard			
Life rating	L ₇₀ @ 25° C per IES TM21-11; >50,000 hours reported; 190,000 hours calculated			

[†] Available as special order. Contact SloanLED Sales.
[‡] Output performance shown using 5000 K CCT.

Ordering Information

Part number
Example: SL-2FT-25L-5K-ODS

PNL - - -

Length & Lumens		Color temp. (CCT)		Occupancy		Emerg. drivers	
Code	Desc.	Code	Desc.	Code	Desc.	Code	Desc.
2FT-25L	2-ft @ 2,500 L	35K	3500 K	(blank)	No sensor	(blank)	No EM
3FT-33L	3-ft [†] @ 3,300 L	4K	4000 K	OS	PIR	EM12	
4FT-46L	4-ft @ 4,600 L	5K	5000 K	ODS	Microwave	EC12 [§]	CA T20
8FT-80L	8-ft @ 8,000 L					EM24	
						EC24 [§]	CA T20

[§] EC emergency drivers are California Energy Commission (CEC) listed.

Contractor Essentials™
SLVT Premium
Linear Vapor Tights
 LED sealed and gasketed fixtures



- Fully gasketed, polycarbonate housing with polycarbonate captive latches for a water and dust-tight seal
- Optional stainless steel latches available
- Class P power supply provides ease of maintenance and flexibility
- IP65 rated for wet locations
- 0-10 V dimming standard, motion and daylight sensor dimming optional
- 165,000 hours calculated life

* 4' model may be ordered with both the internal microwave sensor (MS1) and the 8 W battery backup. 2' model may only be ordered with either the internal microwave sensor (MS1) OR the 8 W battery.
 † Charging temperature is 32° F to 104° F (0° C to 45° C).
 Discharge temperature is -68° F to +140° F (-20° C to +50° C).

SLVT Premium Linear Vapor Tights		2', 25 W	4', 35 W	4', 55 W	4', 75 W
Light output	3500 K	3,115	4,817	7,330	9,550
	4000 K	3,298	5,117	7,850	10,035
	5000 K	3,242	4,975	7,623	9,827
Efficacy	3500 K	121 lm/W	131 lm/W	131 lm/W	129 lm/W
	4000 K	138 lm/W	140 lm/W	140 lm/W	136 lm/W
	5000 K	136 lm/W	136 lm/W	136 lm/W	133 lm/W
Input voltage	120-277 VAC, 50-60 Hz				
Beam	120°				
Color rendering (CRI)	>80				
UL location rating	UL & cUL listed for wet locations				
Dimming	0-10 VDC dimming standard				
Life rating	L ₇₀ @ 25° C per IES TM21-11; >54,000 hours reported; 165,000 hours calculated				

Ordering Information

Part number
 Example: SLVT2425U-40WH-D1MS1

SLVT U- WH-D1

Length		Input power		Color temp (CCT)		Options*	
Code	Desc.	Code	Desc.	Code	Desc.	Code	Desc.
24	2' x 2'	25	25 W	30	3000 K	EC8	8 W battery backup†
				40	4000 K	MS1	Internal microwave sensor
48	2' x 4'	33	35 W	50	5000 K		
		55	55 W				
		75	75 W				

Contractor Essentials™
LEDMPALPRO
Commercial Flood Lights
 LED building and monument lights



- Perfect fit for new construction or retrofit applications
- 0-10 VDC dimming standard
- Lens is IK 9 rated for protection from external impacts
- 6 kV surge protection standard
- Rated for 3G vibration

LEDMPALPRO Commercial Flood Lights	80 W	100 W	140 W [‡]	240 W [‡]	280 W [‡]
Light output [§]	10,009 Lumens	12,084 Lumens	16,687 Lumens	28,409 Lumens	32,955 Lumens
Efficiency	125 lm/W	121 lm/W	119 lm/W	125 lm/W	125 lm/W
Input voltage	120-277 VAC and 347-480 VAC, 50-60 Hz				
Light distribution	3H3V, 4H 4V, 5H 5V, 7H 7V				
Color rendering (CRI)	>80				
cULus location rating	Listed for wet locations				
Ingress protection	IP66				
Life rating	L ₇₀ @ 25° C per IES TM21-11; >50,000 hours reported; 372,000 hours calculated				
Finish	Dark bronze polyester powder coat				

Ordering Information

Part number
 Example: LEDMPALPRO140-5K-3H3V-

LEDMPALPRO -

System power		Color temp. (CCT)		Distribution		Voltage	
Code	Desc.	Code	Desc.	Code	Desc.	Code	Desc.
80	80 W	4K	4000 K	3H3V	3H x 3V	(blank)	120-277 V
100	100 W	5K	5000 K	4H4V	4H x 4V	UNC	347-480 V [¶]
140	140 W [‡]			5H5V	5H x 5V		
240	240 W [‡]			7H7V	7H x 7V		
280	280 W [‡]						

§ Performance shown based on 5000 K CCT and T5 data.
 ¶ Only 140 W, 240 W & 280 W are available in 347 V. 347 V models are not available as DLC.

Confidence for the road ahead.

SloanLED, leaders in light technology for over 60 years, continues our tradition of excellence by announcing an extended warranty on our most popular signage products. While most commercial LED light manufacturers offer 5-year limited warranties, SloanLED offers a 10-year limited product and labor warranty. Plus SloanLED has added 5-year labor assistance to the existing 5-year product warranty on power supplies.

Quality manufacturing processes and rigorous product testing are the reason SloanLED products are built to last, so you can have confidence for the road ahead, knowing your investment in signage is well-protected.

Filing a claim is easy!

No pre-registration necessary!



Visit SloanLED

Visit our online claim form at:
<https://sloanled.com/LaborAssistanceClaimForm>



Tell us your story

Give us a little bit of information about yourself and how we can assist you.



Relax, things just got brighter!

Enjoy peace of mind, knowing SloanLED has you covered. We'll take it from here!

For more information, contact your SloanLED sales representative, or visit slnld.co/warranty



**10
YEAR**
Product & Labor
WARRANTY

Products included in the extended warranty:

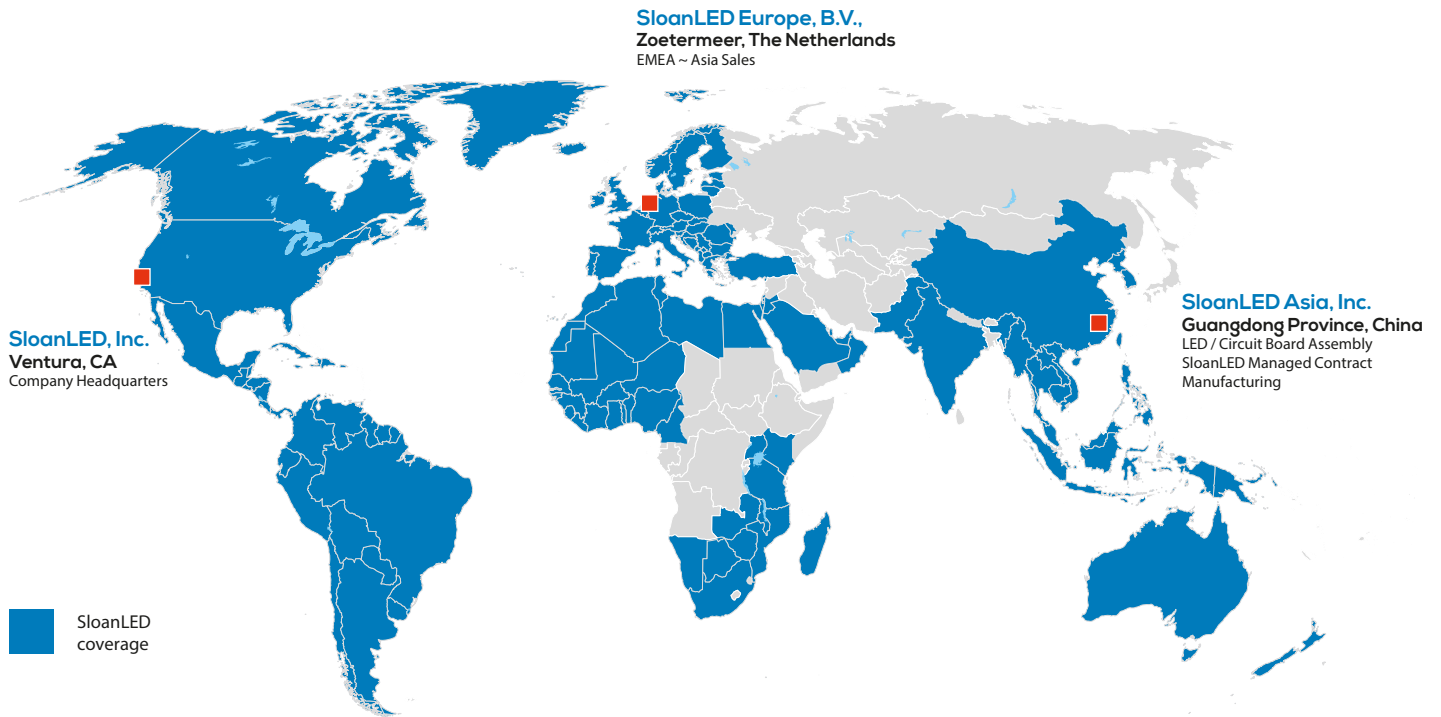
- Complete SloanLED Prism²⁴ family (Standard, Mini, and LP)
- Complete SloanLED Prism family (Standard, Enlighten, Mini, and Nano)
- SignBOX 3
- SloanLED PrismBEAM
- PosterBOX family (Standard, Slim, PosterBOX 3, and PosterBOX ID)



SloanLED[®]
Leaders in LED Technology

No matter where you are. We've got you covered.

From Alaska to Australia, with 150+ employees, and the best global coverage in the industry, we've got you covered.



SloanLED Headquarters

5725 Olivas Park Drive, Ventura, CA, USA
805.676.3200 • info@SloanLED.com

SloanLED Europe b.v.

Argonstraat 110, 2718 SN Zoetermeer, NL
+31 88 12 44 900 • europe@SloanLED.com



SloanLED.com

Trade names, marks and logos shown are the property of their respective owners. Specifications may change without notice.

© 2021 SloanLED Rev AI 2021-09-21

