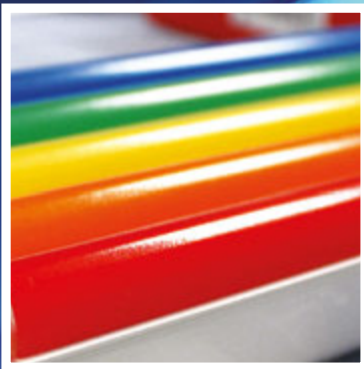


The Complete Solution

for all your
lighting needs

Product
Catalog

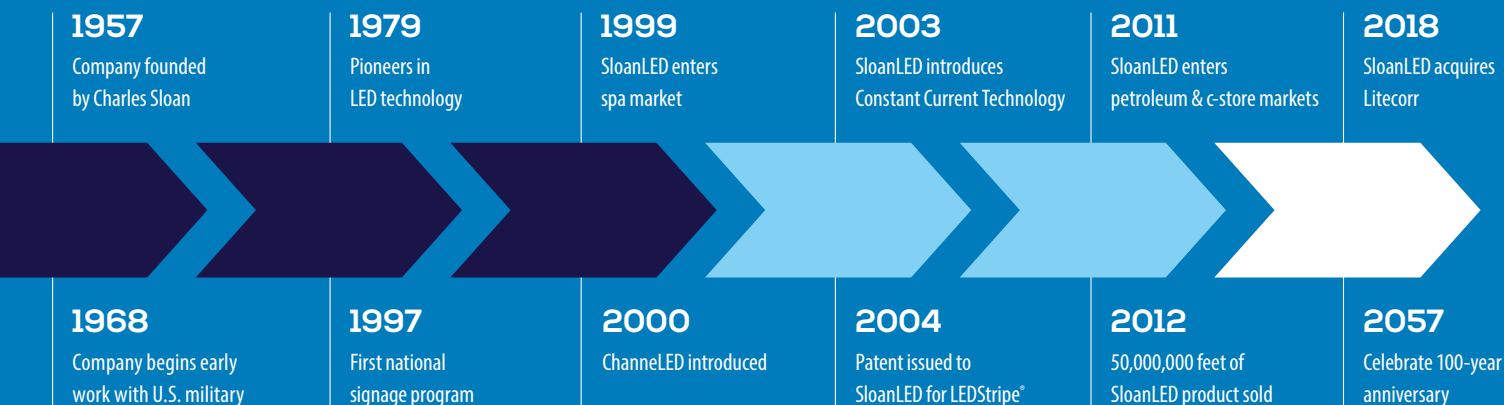
SUMMER
2019



Brightening Your Brands from the Beginning.

Founded in 1957 to design and develop high-reliability lighting products, SloanLED® quickly became a pioneer in LED technology. Our founder, Charles Sloan, was driven by two simple principles: employ the latest technologies to develop quality lighting products and take excellent care of our customers.

SloanLED has continued to deliver on these principles as a leading supplier of aircraft indicator lights for the last 60 years, and our commitment to producing safe, reliable, lighting solutions that withstand the elements and harshest weather conditions, keeps us at the forefront of the lighting market. Our high-efficiency, long lasting solutions don't just brighten your brands; they represent significant energy cost reductions, maintenance cost savings, easy installation, faster ROI, and deliver exceptional performance with consistent brightness and uniformity.



Innovation

We design, test, and deliver comprehensive solutions that factor in total cost of ownership, maximum ROI, and a positive customer experience.

- Reliable, dependable products
- Lowest total cost of ownership
- Reduced maintenance costs
- Fast, easy installation

Quality

We're a proven industry leader with more than 60 years experience producing safe, reliable lighting solutions.

- ISO 9001:2015 certification for quality management
- Superior product lifespans
- LM79 product testing
- Experienced and proven industry leader

Reliability

We use only the highest caliber components for long lasting lighting solutions that deliver exceptional performance.

- Extreme environmental and product-life testing
- Virtually maintenance free
- Long life products, up to 100,000 hours

Sustainability

Our lighting solutions represent significant energy cost reductions, easy installation, faster ROI, and unsurpassed value.

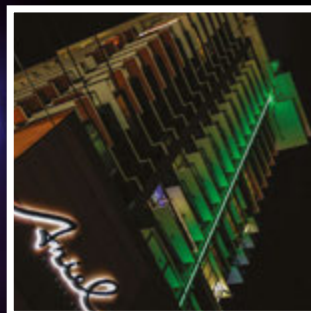
- Significant energy cost savings
- Recycled/recyclable packaging materials
- Mercury free illumination
- Standardized low-voltage systems

Quick Reference Guide

Border Tubing										Pg. 4-5
ColorLINE	Neon-inspired tubing								12 VDC	
FlexiBRITE	Flexible LED tubing								12 VDC	
LEDStripe	Large-profile LED tubing								24 VDC	
Channel Letter										Pg. 6-8
Desired can depth										<div><div></div>Optimal</div> <div><div></div>Acceptable</div>
Product	25 mm	50 mm	75 mm	100 mm	125 mm	150 mm	178 mm	200 mm	228 mm+	
SloanLED Prism ²⁴										24 VDC
SloanLED Prism										12 VDC
SloanLED Prism Mini										12 VDC
SloanLED Prism HO										12/24 VDC
SloanLED Prism Nano										12 VDC
VL Plus 3										12 VDC
VL Plus 3 Mini										12 VDC
VL Plus 3 HO										12 VDC
BendLUX										12 VDC
Sign Cabinet/Box										Pg. 9-11
SloanLED PrismBEAM 24V	Bright, uniform illumination at 8" optimum, up to 16" maximum from face (single and double-sided)								24 VDC	
SignBOX 3	Ideal for single or double-sided new cabinets or retrofits as close as 5" from sign face								24 VDC	
PosterBOX	Side illuminated lighting for shallow to standard cabinets 4" to 8" in depth								12 VDC	
PosterBOX Slim 2	Side illuminated lighting for slim or shallow cabinets as narrow as 2" in depth (single and double-sided)								12 VDC	
PosterBOX 3	Bright, even illumination in large cabinets with depths as shallow as 3" (single-sided), and 4" (double-sided)								24 VDC	
PosterBOX Mini	Cost effective, edge-lit cabinet lighting solution for applications as shallow as 2" deep								12 VDC	
Linear Lighting										Pg. 12
HighLINER 2	Natural white illumination for soffits, awnings, and wall washes								24 VDC	
SlimLINER	Natural white illumination for awnings, vinyl canopies, and accents in narrow applications								12 VDC	
Power Supplies										Pg. 13
Outdoor Commercial										Pg. 14-17
PDL3 MODUS	LED lighting system	Detroit		LED semi cutoff wall pack						
SurfLite 1	LED surface mounted canopy light	Portland		LED full cutoff wall pack						
Twilight	LED post top fixture	Solarta		LED flood lights						
Optimus	LED pole mount family for area lighting									
Indoor Commercial										Pg. 18-19
SloanLED Vista	Edge lit LED flat panel luminaire	Skyline		Linear vapor tight						
Area 51	LED die-cast UFO high bay	RD Series		Recessed downlights						
Refrigerated Display										Pg. 20-21
Cold Deck FIT	LED lighting system for multi-deck merchandisers	Cold Door 3		LED lighting system for cooler doors						

Border Tubing & Accent

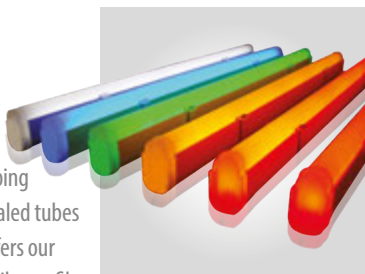
Border tubing and accent LED lighting allows for creative sign solutions. SloanLED proudly offers three LED tubing solutions to fit your application. We bring more than 20 years of experience in designing and manufacturing high performance, reliable, long-lasting LED border tube products. Successful brands, who mean business, choose SloanLED.



ColorLINE

Neon-inspired tubing

Add stunning neon-like appeal and increased awareness to any building with this patented LED-based rigid tubing system. Completely assembled and sealed tubes are ready for installation. ColorLINE offers our brightest tubing light output, a neon-like profile, and innovative lit, mitered corners.

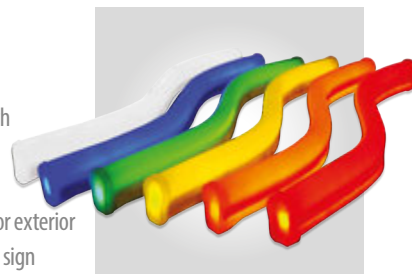


- Classic colors retain hue in daytime
- Standard colors revert to neutral, frosted white when non-illuminated
- Slim profile similar to standard neon
- High impact acrylic: UV stable, hydrocarbon insensitive, and non-fading

FlexiBRITE

Flexible LED tubing

Add a "neon look" to any LED-lit sign with FlexiBRITE field bendable LED tubing. Easily create an endless array of profiles, contours, and patterns on the fly. Ideal for exterior and interior lighting applications such as sign perimeters, letters, symbols, accent stripes, borders, and open-face channel letters.



- Colors retain hue in the daytime
- Optically modified silicone extrusion: UV stable, hydrocarbon insensitive, and non-fading
- Extremely flexible LED tubing
- Convenient mounting clips and mounting tracks

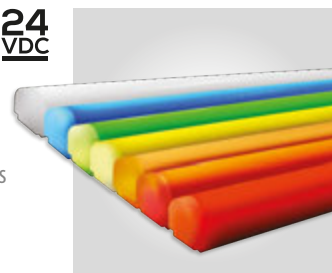
LEDStripe

Large-profile LED tubing

For 20 years LEDStripe® has added lighting elegance and distinction to buildings worldwide. This patented LED-based rigid tubing system, with its large profile and long runs, has become the border tube system of choice for many retail, restaurant, and lodging chains.

- Daytime color when non-illuminated
- High impact acrylic: UV stable, hydrocarbon insensitive, and non-fading
- Can be factory bent to minimum 305 mm (12") radius
- Product can be cut to custom lengths in the field

**24
VDC**



Colors		Part number*	Lengths	Length code	Approx. cut increments	Power per ft/m	Protection class	Power capacity	Mounting
ColorLINE									
Standard colors (X = desired length)	Red	701800-R- X	0.6-m (2-ft) Tube	2	60 mm (2.4 in)	2.28 W / 7.5 W	IP66	7.3 m (24 ft) per 60 W 12 VDC power supply	Dual-position mounting clips (400381-25) orient in two directions
	Orange	701800-O- X							
	Yellow	701800-Y- X							
	Green	701800A-G- X	1.2-m (4-ft) Tube	4					
	Blue	701800A-B- X							
	White	701800-W- X							
	Warm White	701800A-WW- X	1.8-m (6-ft) Tube	6					
Classic colors (X = desired length)	Ruby Red	701800C-R- X							
	Citrus Orange	701800C-O- X							
	Noviol Gold	701800C-Y- X	2.4-m (8-ft) Tube	8					
	Emerald Green	701800C-G- X							
	Bromo Blue	701800C-B- X							

FlexiBRITE								
Ruby Red	701499-R- X	0.6-m (2-ft)	2	50 mm (2")	2.8 W / 9.2 W	IP66	6 m (20 ft) per 60 W 12 VDC power supply	Mounting clips: (701572-25) Mounting track: (701456-10)
Citrus Orange	701499C-O- X							
Noviol Gold	701499C-Y- X							
Emerald Green	701499D-G- X	3.0-m (10-ft)	10	38 mm (1.5")				
Bromo Blue	701499D-B- X							
Snow White	701499D-W- X							

LEDStripe								
Red	701189- X H	0.3-m (1-ft) Tube [†]	1	25 mm (1 in)	1.5 W / 5.0 W (except 0.3-m [1-ft] piece at 3.0 W on average)	IP66	18.3 m (60 ft) per 100 W 24 VDC power supply	Round pre-mounting buttons: 701156 Slide and mount rectangle mounting buttons: 400775
Orange	701189-A- X D		0.6-m (2-ft) Tube	2				
Amber	701189-Y- X D	1.2-m (4-ft) Tube		4				
True Yellow	701189-YT- X		1.8-m (6-ft) Tube	6				
Green	701189D-G- X D	2.4-m (8-ft) Tube		8				
Blue	701189A-B- X D		3.0-m (10-ft) Tube	10				
White	701189E-W- X							
Lemon Yellow [†]	701189E-WY- X							

ColorLINE Accessories		
Snap-on, frosted joint covers (701807) for clean finish illuminated mitered corners:		
Red/Ruby Red, Orange/Citrus Orange, Yellow/Noviol Gold, Emerald Green, Bromo Blue, White	Inside corner	701800-IC-Color
	Outside corner	701800-OC-Color
	Step corner	701800-SC-Color
Green, Blue, Warm White	Inside corner	701800A-IC-Color
	Outside corner	701800A-OC-Color
	Step corner	701800A-SC-Color
Dual-position mounting clips		400381-25

FlexiBRITE Accessories	
Mounting clip	701572-25
Mounting track	701456-10



LEDStripe Accessories		
Snap-on, colored joint and corner covers for clean finish	Joint	701361-Color
	Outside corner	701362-Color
	Inside corner	701363-Color
	Step corner	701364-Color
Mounting buttons	Slide and mount rectangle mounting buttons	400775
	Round pre-mounting	701156



* "X" in part number denotes desired length. See length code column for length codes.
† Lemon Yellow illuminates lighter than its daytime color. Lemon Yellow daytime color is Amber.
‡ Available in U.S. and Canada only.
§ "Unlit product color charts" provided as a courtesy to give a general idea of product color. Colors in chart not printed using Pantone inks and may vary from actual Pantone number/color. For an accurate representation of product color, a Pantone Color Guide book should be used, or order a sample part. For more information on Pantone, visit Pantone.com.

Unlit product color charts[§]

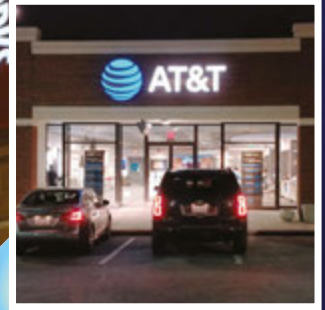
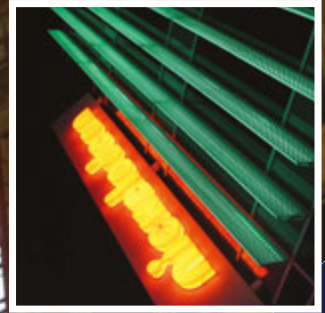
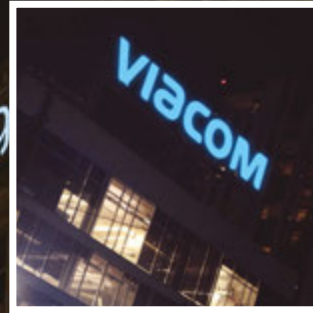
ColorLINE		
Ruby Red PANTONE 485 C	Citrus Orange PANTONE 151 C	Noviol Gold PANTONE 3975 C
Emerald Green PANTONE 355 C	Bromo Blue PANTONE 2935 C	

FlexiBRITE		
Ruby Red PANTONE 179 C	Citrus Orange PANTONE 1655 C	Noviol Gold PANTONE 3955 C
Emerald Green PANTONE 2242 C	Bromo Blue PANTONE 2184 C	

LEDStripe			
Red PANTONE 1797 C	Orange PANTONE 1665 C	Amber PANTONE 2012 C	True Yellow PANTONE 7405 C
Green PANTONE 355 C	Blue PANTONE 2935 C	Lemon Yellow PANTONE 138 C	

Channel Letter

SloanLED channel letter LED lighting products are designed for the whole spectrum of channel letter applications, including face and halo lit, shallow to deep can depths, and routed acrylic letters.



SloanLED Prism

Premium 12V LED channel letter lighting solution

SloanLED® Prism family is the complete solution for channel letter and sign box illumination. The combination of optical physics and decades of sign industry knowledge, these lens based modules are clearly on the spectrum of brilliance.



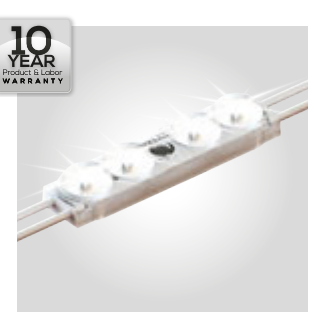
**12
VDC**

- Available in White (7100 K, 6500 K, 5700 K, 5000 K, 4000 K, 3000 K), Red, Orange, Yellow, Green, and Blue
- Ideal lens shape for illuminating channel letters
- Use fewer modules for faster installation and lower cost per sign

SloanLED Prism²⁴

Premium 24V LED channel letter lighting solution

SloanLED Prism²⁴ delivers the power of prism lens technology in a 24 VDC package with over double the square footage of illumination and 34% higher efficacy over the existing 12 VDC version.



**24
VDC**

- Available in White (7100 K, 6500 K, 5000 K, 4000 K, and 3000 K)
- Ideal lens shape for illuminating channel letters
- Use fewer modules for faster installation and lower cost per sign

SloanLED Prism Mini

Premium 12V LED lighting solution for small channel letters

SloanLED Prism Mini takes the big performance of SloanLED Prism modules, and packs it into a tiny but mighty package. Ideal for illuminating small channel letters 50-100 mm (2-4") deep, SloanLED Prism Mini features a micro prism lens that produces a wide, even light spread across a broader array of applications requiring a smaller form factor, making it the brightest and most consistent lighting option in its class. The result is nothing short of brilliance.



**12
VDC**

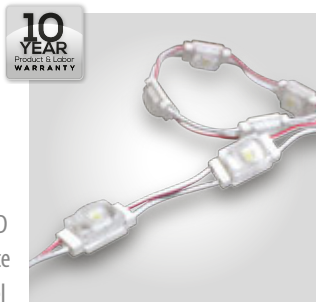
- Available in White (7100 K, 6500 K, 5000 K, 4000 K, 3000 K), Red, Green, and Blue
- Ideal for small channel letters 50-100 mm (2-4") deep
- Versatile mounting options

SloanLED Prism Nano

Premium 12V LED lighting solution for block acrylic signs and small channel letters

SloanLED Prism Nano is the revolutionary LED lighting system that delivers big performance in routed acrylic block letter, shallow channel letter, and backlit halo letter applications as shallow as 25 mm (1").

- Easy flat bends and connections without the need for soldering or PCB cutting
- Elliptical optics deliver bright, uniform illumination
- Easy to mount and install on any channel letter shape

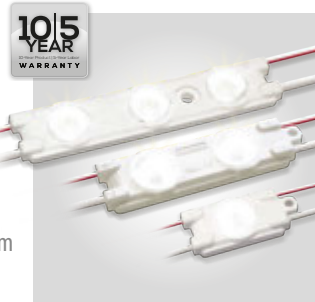


**12
VDC**

VL Plus 3

Everyday LED channel letter lighting solution

VL Plus 3, our cost-effective LED solution for illuminating standard face lit channel letters, surpasses its predecessors with an increased viewing angle, twice the maximum coverage per row, and class leading efficacy and light output.



**12
VDC**

- Standard (White [6500 K, 5000 K, 4000 K, 3000 K] and Red), Mini (White [6500 K, 5000 K, 4000 K]), and High Output (White [6500 K, 5000 K]) versions available
- Use fewer modules for faster installation and lower cost per sign
- Versatile mounting options

BendLUX

Low-profile, flexible strip lighting

BendLUX LED strip lighting system is a thin, flexible solution for illuminating routed acrylic block letter, shallow channel letter, and backlit halo letter applications. Slim and versatile, sign builders will quickly discover how easy BendLUX strips install to fit the contours of narrow or shallow letters.



**12
VDC**

- Bendable in both flat and radial directions
- Easy to mount and install on any channel letter shape
- Strips quickly and easily conform to any shape with "Snap-n-Stretch" 45 mm (1.7") sections for easy flat bends and connections without the need for soldering

Modules per ft/m	Description	Part number	Optimal can depth	Power / module	Lumens/ module	Efficacy	Protection class	Power capacity	Packaging
SloanLED Prism ²⁴									
3.9/m (1.2/ft)	White 7100 K	701269-7W24SJ1-MB	75-200 mm (3-8")	0.86 W	134	155 lm/W	IP66 & 68*	104 modules (26.4 m / 86.7 ft) per 100 W 24 VDC power supply	13.2 m / 43.3 ft (52 modules) per bag
	White 6500 K	701269-6W24SJ1-MB							
	White 5000 K	701269-5W24SJ1-MB							
	White 4000 K	701269-4W24SJ1-MB							
	White 3000 K	701269-3W24SJ1-MB							
SloanLED Prism Whites									
3.3/m (1/ft)	White 6500 K	701269-6WSJ2-MB	75-200 mm (3-8")	1.12 W	124	111 lm/W	IP66 & 68*	48 modules (14.6 m / 48.0 ft) per 60 W 12 VDC power supply	14.6 m / 48.0 ft (48 modules) per tray
4.9/m (1.5/ft)	White 7100 K	701269-7WSJ1-MB						48 modules (9.8 m / 32.0 ft) per 60 W 12 VDC power supply	9.8 m / 32.0 ft (48 modules) per tray
	White 6500 K	701269-6WSJ1-MB							
	White 5700 K	701269-57SJ1-MB							
	White 5000 K	701269-5WSJ1-MB							
	White 4000 K	701269-4WSJ1-MB							
	White 3000 K	701269-3WSJ1-MB							
SloanLED Prism Colors									
6.6/m (2/ft)	Red (628 nm)	701269-RDSJ3-MB	75-200 mm (3-8")	0.72 W	24	33.5 lm/W	IP66 & 68*	75 modules (11.4 m / 37.5 ft) per 60 W 12 VDC power supply	7.3 m / 24 ft (48 modules) per tray
4.9/m (1.5/ft)		701269-RDSJ1-MB						75 modules (15.2 m / 50 ft) per 60 W 12 VDC power supply	9.8 m / 32 ft (48 modules) per tray
	Orange (606 nm)	701269-ORSJ1-MB							
	Yellow (589 nm)	701269-YLSJ1-MB							
	Green (527 nm)	701269-GRSJ1-MB							
	Blue (471 nm)	701269-BLSJ1-MB							

* Prism IP68 test parameters are 1.3 m submersion for 30 minutes. Do not mount in submerged application or where module will be directly exposed to prolonged flowing or dripping water.

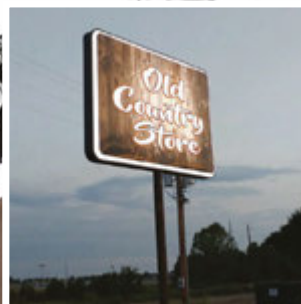
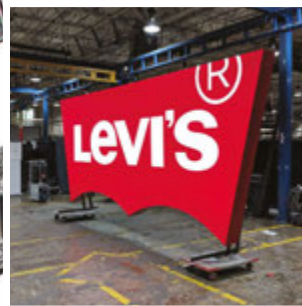
Modules per ft/m	Description	Part number	Optimal can depth	Power / module	Lumens/ module	Efficacy	Protection class	Power capacity	Packaging
SloanLED Prism High Output, 12 VDC									
2.6/m (0.8/ft)	White 6500 K	701269-6WHJ1-MB	125-300 mm (5-12")	1.68 W	180	107 lm/W	IP66 & 68*	32 module (12.2 m / 40.0 ft) per 60 W 12 VDC power supply	12.2 m / 40.0 ft (32 modules) per tray
	White 5000 K	701269-5WHJ1-MB							
SloanLED Prism High Output, 24 VDC									
2.6/m (0.8/ft)	White 6500 K	701269-6W24HJ1-MB	125-300 mm (5-12")	0.86 W	180	115 lm/W	IP66 & 68*	58 modules (22.1 m / 72.5 ft) per 100 W 24 VDC power supply	22.9 m / 75 ft (60 modules) per bag
4.9/m (1.5/ft)		701269-6W24HJ2-MB							
SloanLED Prism Mini Whites									
6.6/m (2/ft)	White 7100 K	701269-7WMJ2-MB	50-100 mm (2-4")	0.43 W	50	116 lm/W	IP66 & 68*	125 modules (19.1 m / 62.5 ft) per 60 W 12 VDC power supply	14.6 m / 48.0 ft (96 modules) per bag, 5 bags per carton
	White 6500 K	701269-6WMJ2-MB							
	White 5000 K	701269-5WMJ2-MB			45	105 lm/W			
	White 4000 K	701269-4WMJ2-MB							
	White 3000 K	701269-3WMJ2-MB							
SloanLED Prism Mini Colors									
6.6/m (2/ft)	Red (624 nm)	701269-RDMJ2-MB	50-100 mm (2-4")	0.30 W	12	40 lm/W	IP66 & 68*	180 modules (27.4 m / 90.0 ft) per 60 W 12 VDC power supply	14.6 m / 48.0 ft (96 modules) per bag, 5 bags per carton
	Green (535 nm)	701269-GRMJ2-MB			30	100 lm/W			
	Blue (470 nm)	701269-BLMJ2-MB			8	27 lm/W			
SloanLED Prism Nano									
25 m (7.6/ft)	White 7200 K	701269-7WNJ1-MB	25-75 mm (1-3")	0.31 W	33	106 lm/W	IP66	150 modules (6.0 m / 19.7 ft) per 60 W 12 VDC power supply	6.0 m / 19.7 ft (150 modules) per bag, 7 bags per carton
	White 6500 K	701269-6WNJ1-MB							
	White 5000 K	701269-5WNJ1-MB							
	White 4000 K	701269-4WNJ1-MB							
	White 3000 K	701269-3WNJ1-MB			25	83 lm/W			
VL Plus 3 Whites									
4.6/m (1.4/ft)	White 6500 K	701269-6WSA3-MB	75-125 mm (3-5")	1.04 W	107	103 lm/W	IP66	52 modules (11.3 m / 37.1 ft) per 60 W 12 VDC power supply	11.3 m / 37.1 ft (52 modules) per bag, 25 bags per carton
	White 5000 K	701269-5WSA3-MB			109	102 lm/W			
	White 4000 K	701269-4WSA3-MB			104	99 lm/W			
	White 3000 K	701269-3WSA3-MB			82	80 lm/W			
VL Plus 3 - Colors									
4.6/m (1.4/ft)	Red (623 nm)	701269-RDSA3-MB	75-125 mm (3-5")	0.63 W	20	32 lm/W	IP66	86 modules (18.7 m / 61.4 ft) per 60 W 12 VDC power supply	18.7 m / 61.4 ft (86 modules) per bag, 15 bags per carton
VL Plus 3 Mini Whites									
6.7/m (2.0/ft)	White 6500 K	701269-6WMA3-MB	50-125 mm (2-5")	0.49 W	50	102 lm/W	IP66	110 modules (16.8 m / 55.0 ft) per 60 W 12 VDC power supply	16.8 m / 55.0 ft (110 modules) per bag, 5 bags per carton
	White 5000 K	701269-5WMA3-MB							
	White 4000 K	701269-4WMA3-MB							
VL Plus 3 High Output									
4.6/m (1.4/ft)	White 6500 K	701269-6WHA3-MB	125-200 mm (5-8")	1.27 W	130	102 lm/W	IP66	42 modules (9.1 m / 30.0 ft) per 60 W 12 VDC power supply	9.1 m / 30.0 ft (42 modules) per bag, 10 bags per carton
	White 5000 K	701269-5WHA3-MB							
BendLUX									
3	White 6500 K	701960-6WS241	30 mm (1.2")	0.3 W per section	365	85 lm/W	N/A	12.5 strips per 60 W 12 VDC power supply	12 strips per box

* Prism IP68 test parameters are 1.3 m submersion for 30 minutes. Do not mount in submerged application or where module will be directly exposed to prolonged flowing or dripping water.

Sign Cabinet/Box

SloanLED offers brilliant sign lighting solutions for single and double-sided, narrow to large, new and retrofit, box and cloud signs. Our products are designed and engineered with sign makers in mind, to provide bright, even illumination, incredible ROI, and fast, easy installation.

We spend our time inside the box, to provide lighting solutions that go beyond the box to brighten your bottom line.

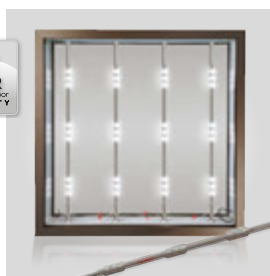


SloanLED PrismBEAM 24V

LED solution for retrofitting sign cabinets

10 YEAR
Product & Labor
WARRANTY

24
VDC



SloanLED extends the unparalleled, uniform illumination of our micro prism lens products to box sign lighting with SloanLED PrismBEAM 24V: a cost-effective, lens based LED lighting solution designed to replace existing T12 fluorescent lamps.

- Available in all standard lamp sizes
- Easy installation using existing sockets, requiring no connectors or adapters
- Available in single and double-sided options
- Uniform illumination at 125-200 mm (5-8") optimum, up to 400 mm (16") maximum from face
- High efficiency and long life

		Single-sided	Double-sided
Lengths	0.46 m (18 in)	701972-6WPS182	701972-6WPD182
	0.61 m (24 in)	701972-6WPS242	701972-(X)WPD242
	0.76 m (30 in)	701972-6WPS302	701972-(X)WPD302
	0.91 m (36 in)	701972-6WPS362	701972-(X)WPD362
	1.07 m (42 in)	701972-6WPS422	701972-(X)WPD422
	1.22 m (48 in)	701972-6WPS482	701972-(X)WPD482
	1.52 m (60 in)	701972-6WPS602	701972-(X)WPD602
	1.63 m (64 in)	701972-6WPS642	701972-(X)WPD642
	1.83 m (72 in)	701972-6WPS722	701972-(X)WPD722
	2.13 m (84 in)	701972-6WPS842	701972-(X)WPD842
	2.44 m (96 in)	701972-6WPS962	701972-(X)WPD962
	2.74 m (108 in)	701972-6WPS1082	701972-(X)WPD1082
	2.97 m (117 in)	701972-6WPS1172	701972-(X)WPD1172
	3.05 m (120 in)	701972-6WPS1202	701972-(X)WPD1202
Color temperatures		6500 K, 5000 K	
Efficacy		115 lm/W	
Optimum cabinet depth		127-203 mm (5-8")	254-406 mm (10-16")
Protection class		IP66 & IP68*	
Life rating		>60,000 hours	
Fastening		Fluorescent lampholders	

SloanLED PrismBEAM 24V Accessories

Bracket	
Optional – Sold in bags of 10	402297-10



* Prism IP68 test parameters are 1.3 m submersion for 30 minutes. Do not mount in submerged application or where module will be directly exposed to prolonged flowing or dripping water.

SignBOX 3

LED illumination for single or double-sided sign boxes

SignBOX 3, for single or double-sided sign cabinets, features micro prism lens technology engineered to deliver bright, uniform illumination and wider spacing in new or retrofit sign boxes.

- Illuminates 125 mm (5") from the face
- SignBOX 3 Module features a peel-and-stick adhesive back for fast, easy installation
- 24 VDC loading allows 48 single-sided modules or 24 double-sided modules per power supply for maximum efficiency and fewer power supplies

		Strapped single-sided	Strapped double-sided	Module
Part number	6500 K	701946-6WLSL1	701946-6WDLS1	701946-6WSLT1
	5000 K	701946-5WLSL1	701946-5WDLS1	701946-5WSLT1
Modules per ft (m)	1 (3.3)			
Coverage per row	305 mm (12")			
Optimal light throw	125 - 300 mm (5 - 12) from face			
Protection class	IP66 & IP68*			
Life rating	>60,000 hours			
Power per module	1.92 W	3.84 W	1.92 W	
Efficacy	156 lm/W			
Power capacity per SloanLED 100 W 24 VDC power supply	48	24	48	
Fastening	Clips with mechanical fasteners		Peel-n-stick	
Packaging	60 modules per carton, 40 clips included		3 trays, 48 modules per tray	
Lumens per module	300	600	300	

SignBOX 3 Accessories

Mounting hardware	
Bracket – Bag of 10	402107-10
Coupler – Bag of 10	402108-10
Clip – Bag of 20	402106-20



10 YEAR
Product & Labor
WARRANTY

24
VDC



PosterBOX

Side illumination for shallow or narrow cabinets

PosterBOX™ features FanFlare™ technology that directs the light across the sign face with bright, even illumination. Designed for single-sided and double-sided sign boxes, PosterBOX can be used for new or retrofitted signs replacing fluorescent.

- Easily illuminates double-sided cabinets with 10–15 cm (4–6") depths
- Side mounted module
- FanFlare lens technology projects light in a fan pattern to evenly illuminate sign face

Part number	701946-CWPBM	
Color temperatures	6500 K	
Module spacing	Cabinet depth: ≤10cm (4 in)	Center-to-center 30 cm (12 in)
	Cabinet depth: >10 cm (4 in) to ≤20 cm (8 in)	Center-to-center 45 cm (18 in)
Light coverage†	1.2 m (4 ft)	
Protection class	IP66	
Power per module	6.7 W	
Efficacy	82 lm/W	
Lumens per module	550	
Power capacity	8 modules per SloanLED 60 W 12 VDC power supply	
Fastening	Peel-n-stick and mechanical	
Packaging	10 modules and FlareShields™ per carton	

PosterBOX Accessories

Flare Shield Each carton of PosterBOX comes with 10 FlareShields	401059
--	--------



PosterBOX Slim 2

Side illumination for shallow light boxes

PosterBOX™ Slim 2 washes light across single and double-sided displays using FanFlare™ lens technology that optimizes the light inside the box. The result is uniform light without the stripes associated with fluorescent tubes.

- Excellent white light intensity and uniformity
- Optimal for applications as shallow as 50 mm (2"), e.g., indoor textile prints, movie posters, and cabinets using FlexFace®

* Prism IP68 test parameters are 1.3 m submersion for 30 minutes. Do not mount in submerged application or where module will be directly exposed to prolonged flowing or dripping water.
† Testing highly recommended as all substrates and graphics vary.

10 YEAR
Product & Labor
WARRANTY



Part number	701946-6WXL2	701946-5WXL2
Color temperatures	6500 K	5000 K
Light coverage†	0.6 m (2 ft)	
Modules per foot/meter	2 / 6.5	
Minimum box depth	50 mm (2 in), single or double-sided	
Protection class	IP66	
Viewing angle	15° × 43°	
Power per module	1.8 W	
Efficacy	100 lm/W	
Lumens per module	180	
Power capacity	30 modules per SloanLED 60 W 12 VDC power supply	
Fastening	Peel-n-stick and mechanical	
Packaging	38 modules per tray, 3 trays per carton	

PosterBOX 3

Large, shallow fabric-faced light box illumination

PosterBOX™ 3, engineered specifically for large, fabric-faced light box applications, is the bright and even lighting solution this unique application requires. With an output of 1700 lumens (Long) and a built-in LED module spacer, striping and spotting vanish.



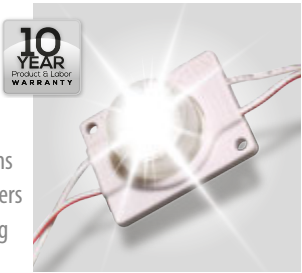
- Slim, edge mounted modules make installs fast and easy
- Bright, even illumination in large cabinets with shallow depths of 50 mm (2") for single-sided applications and 100 mm (4") for double-sided applications
- High efficiency and long life
- Built-in module spacer eliminates measuring and yields perfect LED pitch every time

Part number	Short	701946-6WSRP1
	Long	701946-6WLRP1
Viewing angle	12.2° × 44.8° illumination	
Color temperature (nominal)	6500 K	
Minimum cabinet depth	Single-sided	75 mm (3")
	Double-sided	100 mm (4")
Protection class	IP66	
Power per module	Short	7.2 W
	Long	14.0 W
Efficacy	Short	118 lm/W
	Long	121 lm/W
Lumens per assembly	Short	850
	Long	1700
Power capacity	6 modules per SloanLED 100 W 24 VDC power supply	
Fastening	Mechanical fasteners, Peel-n-stick (optional)	
Packaging	6 assemblies per tray, 5 trays per carton	

PosterBOX Mini

Side illumination for shallow or narrow light boxes

PosterBOX™ Mini is a cost-effective, edge-lit cabinet lighting solution for lightbox applications as shallow as 50 mm (2") deep, and gives installers unprecedented freedom with adjustable spacing and an innovative design that accommodates shallow light boxes of any shape making it the bright choice for a variety of applications.



- Cost effective, edge-lit cabinet lighting solution for applications as shallow as 50 mm (2") deep
- Innovative design and adjustable spacing make installation easy for a variety of light boxes of different depths and shapes
- FanFlare™ technology projects light in a fan pattern to evenly illuminate sign face

Part number	701946-6WMLP1
Viewing angle	15 × 40°
Module spacing	188 mm (7.4") center-to-center
Protection class	IP66
Power per module	1.2 W
Efficacy	87 lm/W
Lumens per module	104
Power capacity	45 modules per SloanLED 60 W 12 VDC power supply
Fastening	Peel-n-stick and mechanical
Packaging	60 modules per bag, 10 bags per carton

Linear Lighting

Linear Lighting from SloanLED is a great solution for illuminating cove, awning, and wall wash applications or to highlight non-illuminated signs.



HighLINER 2



Outdoor and indoor linear lighting

- Easy installation for both new construction and retrofit
- Improves walkway and aisle visibility and building aesthetics
- Fits easily into new or existing interior and exterior spaces
- Illuminates soffits evenly
- **Saves up to 64% energy compared with typical fluorescent fixtures**



		1.2 m (4')		0.3 m (1')	
Color temperatures (CCT)		5000 K	3500 K	5000 K	3500 K
Part number		701912-C1175	701912-35C2175	701912-L1C1175	701912-L135C2175
Input power	System*	17 W		4 W	
	Luminaire†	14.4 W		3.6 W	
System efficacy		105 lm/W	93 lm/W	105 lm/W	93 lm/W
Light output (Lumens)‡		1792	1582	448	395
Color rendering (CRI)		80	>70	80	>70
Protection class		IP66 & IP68§			
UL location rating		Dry, damp, and wet locations			
Dimming		Optional Motion Sensing			

HighLINER 2 Accessories

Mounting Clip: Three (3) included with 1.2 m (4 ft) assembly. Two (2) included with 0.3 m (1 ft) assembly.		400686
Wire Nut Housing: Two (2) included with 1.2 m (4 ft) assembly. Two (2) included with 0.3 m (1 ft) assembly.		400860

SlimLINER

Low-profile outdoor and indoor linear lighting

- Fast, easy installation with versatile mounting options
- Can be cut in the field to custom lengths
- Slim, lightweight, low-profile fixture
- 305 mm (12") bend radius
- Illuminates awnings evenly
- Constant Current Technology (CCT)



Part number	701956-SWL461	701956-3WL461
Color temperatures (CCT)	5000 K	3500 K
Lumens per fixture	970	825
Color rendering (CRI)	70 (nominal)	82 (nominal)
In-field bends	Radial bend: 305 mm (12 in)	
Protection class	IP66 & IP68	
Fastening	Peel-n-stick or mounting clips (401203), 4 included with each unit	
Power capacity	6 units per SloanLED 60 W 12 VDC power supply	

* For calculating the maximum number of luminaires that can be connected to the branch circuit, use the SYSTEM INPUT POWER.
 † For calculating the maximum number of luminaires that can be connected to a power supply, use the LUMINAIRE INPUT POWER.
 ‡ Tolerance range for optical and electrical data: ±15%.
 § IP68 test parameters are 1.3 m submersion for 30 minutes. Do not mount in submerged application or where fixture will be directly exposed to prolonged flowing or dripping water.

Power Supplies

SloanLED power supplies are engineered to last and are among the most rugged in their class.



12 VDC* – Compatible with SloanLED 12 VDC products

Model	Part number	Dimensions	Nominal input voltage	Max. input current	Power output	Location rating	Operating temperature	Protection class
Compact 12/25 W	410174	148 mm × 40 mm × 32 mm (5.83 in × 1.58 in × 1.26 in)	100-240 VAC, 50-60 Hz	0.40 A	25 W @ 12 VDC, Class 2 output	Dry and damp locations	-40° C to +70° C	IP67
60C1 60 W	701507-60C1	142 mm × 46 mm × 33 mm (5.6 in × 1.8 in × 1.3 in)	100-277 VAC, 50-60 Hz	0.70 A	60 W @ 12 VDC, Class 2 output	Dry and damp locations	-40° C to +60° C, natural convection cooling	IP54
60W2 60 W	701507-60W2	268 mm × 58 mm × 50 mm (10.55 in × 2.28 in × 1.98 in)	100-277 VAC, 50-60 Hz	0.70 A	60 W @ 12 VDC, Class 2 output	Dry, damp, and wet locations	-40° C to +60° C, Derate to 50% of max load at +70° C	IP68
120D1 120 W	701507-120D1	244 mm × 56 mm × 43 mm (9.6 in × 2.2 in × 1.7 in)	100-277 VAC, 50-60 Hz	1.70 A	120 W @ 12 VDC, two (2) Class 2 outputs	Dry and damp locations	-40° C to +60° C, natural convection cooling	IP54

24 VDC* – Compatible with SloanLED 24 VDC products

Model	Part number	Dimensions	Nominal input voltage	Max. input current	Power output	Location rating	Operating temperature	Protection class
Compact 24/40 W	410175	163 mm × 43 mm × 32 mm (6.40 in × 1.70 in × 1.26 in)	100-277 VAC, 50-60 Hz	0.6 A	40 W @ 24 VDC, Class 2 output	Dry and damp locations	-40° C to +60° C ambient (Derate to 80% of max load at +60°)	IP67
24 VDC 100 W <i>Dry, damp, and wet</i>	701895-24C1	236 mm × 62 mm × 39 mm (9.29 in × 2.44 in × 1.55 in)	100-277 VAC, 50-60 Hz	1.3 A	100 W @ 24 VDC, Class 2 output	Dry, damp, and wet locations	-40° C to +60° C, Derate to 50% of max load at +70° C	IP68
24S1 100 W	701895-24S1	193 mm × 63 mm × 40 mm (7.60 in × 2.48 in × 1.59 in)	100-277 VAC, 50-60 Hz	1.40 A	96 W @ 24 VDC, Class 2 output	Dry and damp locations	-40° C to +60° C	IP64

* Configured for Class 2 Output.

† Compatible with 701507-60C1, 701507-120D1, and 701936.

Accessories



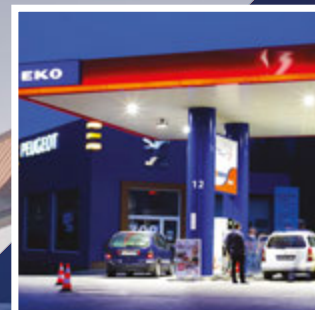
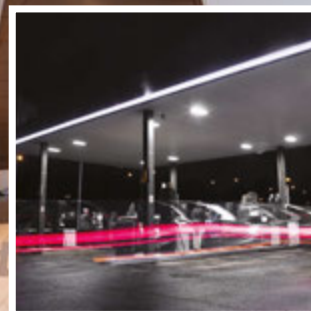
Universal Primary Wire Enclosure†
402218



Universal LED Bluetooth Dimmer
601115

Outdoor Commercial

SloanLED outdoor commercial LED lighting systems capture customer attention with consistent and bright illumination, in addition to providing sizable energy savings over non-LED fixtures.



Revolutionary design for powerful solutions.

PDL3 MODUS

LED lighting system

1 Select a fixture

PDL3 MODUS	5000 K	701948-SWTWT3-M
	4000 K	701948-4WTWT3-M
PDL3 MODUS High Output	White	701948-SWTWT3-MH
	Bronze	701948-SWTBZ3-MH

PDL3 MODUS is a universal 1-for-1 upgrade of existing 400 W HID downlights, featuring application-based high (200 W), medium (150 W), and low (75 W) driver solutions that make it the ideal luminaire replacement for petroleum canopies, parking structures/ surface mount, and walk-in coolers.

- Designed for fast, one person installation, without the need for site surveys
- Power Module allows each driver solution to have three lumen settings without hardware replacement
- Faster ROI, industry leading warranty, and virtually no maintenance
- **Energy savings up to 250% over typical HID fixtures**



Standard



High Output

	PDL3 MODUS						PDL3 MODUS High Output		
	75 W MOD			150 W MOD			200 W MOD		
System power settings	36 W	51 W	66 W	88 W	105 W	125 W	123 W	141 W	164 W
System efficacy	165 lm/W	158 lm/W	153 lm/W	147 lm/W	141 lm/W	136 lm/W	165 lm/W	162 lm/W	159 lm/W
Input voltage	100-277 VAC, 50-60 Hz						100-277 VAC, 50-60 Hz		
Light output (lm/W)	5,970 Lumens	8,272 Lumens	10,371 Lumens	12,818 Lumens	15,039 Lumens	17,112 Lumens	21,062 Lumens	23,828 Lumens	27,006 Lumens
Light distribution	Symmetric (Type 5)						Symmetric (Type 5)		
Color temperature (CCT)	4000 K, 5000 K						5000 K		
Ingress protection	IP68 (highest dust and water protection)						IP68 (highest dust and water protection)		
UL location rating	Suitable for wet locations						Suitable for wet locations		
Life rating	100,000 hours (L ₇₀) [*] at maximum operating conditions						60,000 hours (L ₇₀) [*] at maximum operating conditions		
Dimming	1-10 VDC control on power supply [†]						1-10 VDC control on power supply [†]		

* Based on LED component manufacturer data.

† Requires 1-10 V connector cable (P/N 410168).

MOD1 Global Petroleum Canopy



Included in kit: Driver and Power Module with VDE compliant cable – for EU/AUS applications.

- Fixture connects to IP68-rated driver and Power Module
- Installer adds own junction box or plug to hook up primary power

MOD4 Parking Garage/Surface Mount



Included in kit: Driver, Power Module, and SloanLED Surface Mounting Box.

- Fixture connects to SloanLED surface mounting box, and IP68-rated driver and Power Module
- Mounts to: Solid flat surface, reinforced J-box, Aircraft cable suspension, and pendant drop
- Driver comes mounted to surface mounting box

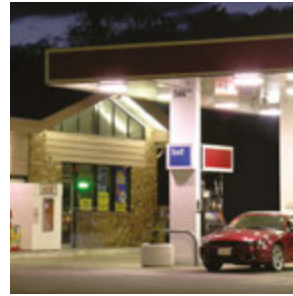
MOD2 North American Petroleum Canopy



Included in kit: Driver, Power Module, Power Supply Enclosure, Gasket, and Hardware.

- Fixture connects to IP68-rated driver and Power Module
- Power supply enclosure allows water to pass through and out
- Driver comes mounted to enclosure lid
- Gasket seals against canopy – Eliminates need to seal installation with tar/roofing material

MOD5 North American Shoebox Retrofit



Included in kit: Driver, Power Module, and UL compliant cable.

- Fixture connects to IP68-rated driver and Power Module
- Installs into existing shoebox or retrofit

MOD3 North American Walk-in Cooler



Included in kit: Driver, Power Module, Power Supply Enclosure, Extension Nipple, and Hardware.

- Fixture connects to IP68-rated driver and Power Module
- Driver comes mounted to enclosure lid
- Extension Nipple protects cable as it passes through 4" (102 mm) foam insulation of cooler, and threads into fixture in waterproof fitting

2 Select a power supply solution

Desc.	For use with	Code	Wattage	Part number
MOD1 Global Petroleum Canopy	PDL3 MODUS Standard	MOD 1.1	75 W	601071
		MOD 1.2	150 W	601072
	PDL3 MODUS HO	MOD 1.3	200 W	601073
MOD2 North American Petroleum Canopy	PDL3 MODUS Standard	MOD 2.1	75 W	601074
		MOD 2.2	150 W	601075
	PDL3 MODUS HO	MOD 2.3	200 W	601076
MOD3 North American Walk-In Cooler	PDL3 MODUS Standard	MOD 3.1	75 W	601077
		MOD 3.2	150 W	601078
	PDL3 MODUS HO	MOD 3.3	200 W	601079
MOD4 North American Parking Garage/Surface Mount	PDL3 MODUS Standard	MOD 4.1	75 W	601080
		MOD 4.2	150 W	601081
	PDL3 MODUS HO	MOD 4.3	200 W	601082
MOD4 Global Parking Garage/Surface Mount	PDL3 MODUS Standard	MOD 4.4	75 W	601088
		MOD 4.5	150 W	601089
	PDL3 MODUS HO	MOD 4.6	200 W	601090
MOD5 North American Shoebox Retrofit	PDL3 MODUS Standard	MOD 5.1	75 W	601083
		MOD 5.2	150 W	601084
	PDL3 MODUS HO	MOD 5.3	200 W	601085

3 Select Accessories

PDL3 MODUS Accessories

Mounting Plate, 700 mm	401568-700
Mounting Plate, Bronze, 700 mm	401568-700MH
Shoebox Mounting Plate	401397
Shoebox Mounting Plate (Bronze)	401397-BZ
Blank Plate (De-lamping)	401219
Blank Plate, Bronze (De-lamping)	401219-BZ
Install Template [†]	401398
1-10 V Connector Cable	410168
EU Waterproof Junction Box	701952-EU

Dimming Accessories*

Dimming Controller for 75 W Power Supply	601092
Dimming Controller for 150 W Power Supply	601093
Dimming Controller for 200 W Power Supply	601094
Occupancy Sensor	701953

* Power supply solution not included.

† Dimming controller replaces the Power Module.

Dimming controller box fits inside housings of MOD 2, MOD 3, and MOD 4. To install dimming controller on MOD 1, a plastic enclosure must be used (P/N 701952-EU).

SurfLite 1

LED surface mounted canopy light
LCG-CP

SurfLite 1 is a slim, surface mounting canopy fixture for parking structures, car washes, building soffits, and walkways.

- Slim design fits more applications with low overhead clearance
- Superior optic design for low glare and even light distribution



System power	35 W	45 W	65 W
Input voltage	100-277 VAC, 50-60 Hz		
System efficacy	131 lm/W	130 lm/W	130 lm/W
Power factor	>0.95		
Light output	4,600 Lumens	5,850 Lumens	8,450 Lumens
Color temperatures (CCT)	3000 K*, 4000 K, 5000 K		
Color rendering (CRI)	>70		
Dimming	1-10 VDC control on power supply		
Ingress protection	IP65		
UL location rating	Suitable for wet locations		
Life rating	>50,000 hours at maximum operating conditions		
Finish	Bronze and White ¹ powder paint		

Ordering Information

Part number

Example: LCG-CP-35W-U-40K-BZ-D1

LCG-CP- -U- - -D1

Wattage		Kelvin temperature		Finish	
Code	Description	Code	Description	Code	Description
35W	35 W	30K	3000 K*	BZ	Bronze
45W	45 W	40K	4000 K	WT	White ¹
65W	65 W	50K	5000 K		

Twilight

LED post top fixture
LCG-PT

The Twilight LED post top area light beautifies parking areas, pedestrian walkways, and outdoor hospitality areas.

- Tier 1 LED for high luminous efficiency and long life
- High-crystalline optical glass lens for reduced glare
- Type II optic for path or area lighting



System power	30 W	40 W	50 W
Input voltage	100-277 VAC and 277-480 VAC		
System efficacy	96 lm/W		
Power factor	>0.90		
Light output	2,880 Lumens	3,840 Lumens	4,800 Lumens
Color temperatures (CCT)	3000 K, 4000 K, 5000 K		
Color rendering (CRI)	>70		
Dimming	Non-dimming		
Ingress protection	IP65		
UL location rating	Suitable for wet locations		
Life rating	>50,000 hours (L ₇₀)		
Finish	Black, Bronze, or White polyester powder coat		

Ordering Information

Part number

Example: LCG-PT-30W-U-40K-T5-BZ

LCG-PT- - - -T5-

Power		Voltage		Kelvin temp.		Finish	
Code	Desc.	Code	Desc.	Code	Desc.	Code	Desc.
30W	30 W	U	100-277 VAC	30K	3000 K	BK	Black
40W	40 W	H	277-480 VAC	40K	4000 K	BZ	Bronze
50W	50 W			50K	5000 K	WT	White

Optimus

LED pole mount lights
LCG-SB

Optimus pole mount light family is the perfect choice for commercial and retail area, and parking and street lighting. Designed to replace from 250 W to 1000 W HID fixtures, this family can be installed on poles up to 12.2 m (40') with brilliant illumination. Flexible arm designs allow for use as a wall wash or uplight for architectural lighting.

- Tier 1 LED for high luminous efficiency and long life
- Die cast aluminum design for better cooling and durability
- Excellent optical design

Size	300 W	200 W	150 W	100 W	60 W
System efficacy	130 lm/W	135 lm/W	140 lm/W	130 lm/W	145 lm/W
Light output (nominal)	39,000 Lumens	27,000 Lumens	21,000 Lumens	13,000 Lumens	8,700 Lumens
Light distribution	Type II, Type III, Type IV ¹ , and Type V				
Color temperatures (CCT)	3000 K, 4000 K, 5000 K				
Color rendering (CRI)	>70				
Dimming	1-10 V dimmable driver				
Ingress protection	IP66				
Life rating	>50,000 hours (L ₇₀)*				
Body colors	Black, Bronze, Grey ¹ , and White ¹				



Ordering Information

Part number

Example: LCG-SB-100W-U-50K-T3-BZ-S-D1

LCG-SB- - - - - -D1

Power		Voltage		Kelvin temp.		Light dist.		Body color		Mounting	
Code	Desc.	Code	Desc.	Code	Desc.	Code	Desc.	Code	Desc.	Code	Desc.
300W	300 W	U	100-277 VAC	50K	5000 K	T5	Type V	BK	Black	A	Straight Arm
200W	200 W	H	347-480 VAC [†]	40K	4000 K	T4	Type IV ¹	BZ	Bronze	K	Adjustable Arm [‡]
150W	150 W			30K	3000 K	T3	Type III	GY	Grey ¹	S	Slipfitter
100W	100 W					T2	Type II	WT	White ¹	T	Trunnion
60W	60 W										

Optimus Accessories

60 mm (2.375") Tenon Kit	Square poles	Black	601102-BK
		Bronze	601102-BZ
		Silver	601102-CC-SL [§]
		White	601102-CC-WH [¶]
	Round poles	Black	601017-BK-3.0
		Bronze	601017-BZ-3.0
		Silver	601017-SL-3.0 [§]
		White	601017-WT-3.0 [¶]
Photocell Socket ^Δ		601053	
Universal Voltage Photocell ^Δ		401762	

* Based on LED component manufacturer data.

† Available by special order, please contact SloanLED for lead times.

‡ 347-480 VAC only available on 150 W, 200 W, and 300 W, special order.

§ Matches Grey (GY) finish.

¶ Matches White (WH) finish.

Δ 100 - 277 VAC

Detroit

LED semi cutoff wall pack LCG-WPSC

Detroit semi-cutoff wall pack fixtures provide great security or broad area lighting in alleyways, commercial parks, and commercial/manufacturing facilities. Designed with lumen outputs of 5000 lm to 16,000 lm, they are a perfect retrofit for 250 W to 400 W HID fixtures.

- Die cast aluminum provides efficient cooling and durability
- Excellent optics design
- Easy to install with hinged base
- Mounts over J-box or wire with conduit by knockouts on three sides



System power	45 W	70 W	100 W	150 W
Input voltage	100-277 VAC or 200-480 VAC†			
Power factor	>0.95			
Light output	4,950 Lumens	7,750 Lumens	11,000 Lumens	16,000 Lumens
Color temperatures (CCT)	3000 K¹, 4000 K, 5000 K			
Color rendering (CRI)	>70		>80	
Dimming	Non-dimming			
Ingress protection	IP65			
UL location rating	Suitable for wet locations			
Life rating	>50,000 hours (L₇₀)*			
Finish	Bronze or White¹ polyester powder coat			

Ordering Information

Part number

Example: LCG-WPSC-70W-U-50K-BZ

LCG-WPSC- - - -

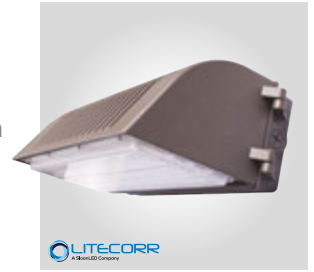
Nominal wattage		Voltage		Kelvin temperature		Finish	
Code	Desc.	Code	Desc.	Code	Desc.	Code	Desc.
45W	45 W	U	100-277 VAC	30K	3000 K‡	BZ	Bronze
70W	70 W	H	200-480 VAC†	40K	4000 K	WT	White‡
100W	100 W			50K	5000 K		
150W	150 W						

Portland

LED full cutoff wall pack LCG-WPFC

Portland full-cutoff wall pack fixtures provide a glare-free pathway and architectural wall light in retail malls, condominiums and apartments, business parks, and educational facilities. Designed for Dark Sky compliance, they are the first choice for public areas that are light sensitive.

- Die cast aluminum provides efficient cooling and durability
- Excellent optics design with zero light above 90°
- Easy to install with hinged base
- Mounts over J-box or wire with conduit by knockouts on three sides of base



System power	45 W	70 W
Input voltage	100-277 VAC or 347-480 VAC†	
Power factor	>0.95	
Light output‡	5,940 Lumens	8,460 Lumens
Color temperatures (CCT)	4000 K, 5000 K	
Color rendering (CRI)	>70	
Dimming	Non-dimming	
Ingress protection	IP65	
UL location rating	Suitable for wet locations	
Life rating	>50,000 hours (L ₇₀)§ at maximum operating conditions	
Finish	Bronze or White‡ polyester powder coat	

Ordering Information

Part number

Example: LCG-WPFC-70W-U-50K-BZ

LCG-WPFC- - - -

Nominal wattage		Voltage		Kelvin temperature		Finish	
Code	Desc.	Code	Desc.	Code	Desc.	Code	Desc.
45W	45 W	U	100-277 VAC	40K	4000 K	BZ	Bronze
70W	70 W	H	347-480 VAC†	50K	5000 K	WT	White‡

* Based on LED component manufacturer data.

† Available by special order, please contact SloanLED for lead times.

‡ Based on 5000 K data.

§ Based on 4000 K data.

Solarta

LED flood lights LCG-FL

Solarta floodlights are designed as a replacement for 100 W HID fixtures in landscape, architectural wall wash, and signage lighting. Their versatile design makes them a great solution where you need task or accent lighting in your outdoor application.

- Medium range floodlights for outdoor foliage, sign, and accent lighting
- Tier 1 LED for high efficiency and long life
- Trunnion mounting bracket is adjustable 180°



System power	45 W	70 W
Input voltage	110-277 VAC or 200-480 VAC†	
Power factor	>0.95	
Light output§	5,400 Lumens	8,400 Lumens
Color temperatures (CCT)	3000 K‡, 4000 K, 5000 K	
Color rendering (CRI)	>70	
Driver efficiency	>90%	
Ingress protection	IP65	
UL location rating	Suitable for wet locations	
Life rating	>50,000 hours (L ₇₀) at maximum operating conditions	
Finish	Bronze or White‡ polyester powder coat	

Ordering Information

Part number

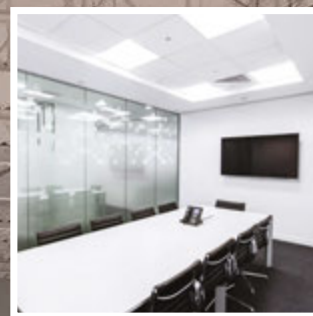
Example: LCG-FL-45W-U-30K-BZ-T

LCG-FL- - - - -T

Nominal wattage		Voltage		Kelvin temperature		Finish	
Code	Desc.	Code	Desc.	Code	Desc.	Code	Desc.
45W	45 W	U	100-277 VAC	30K	3000 K‡	BZ	Bronze
70W	70 W	H	200-480 VAC†	40K	4000 K	WT	White‡
				50K	5000 K		

Indoor Commercial

SloanLED indoor commercial LED lighting systems use cutting edge LED technology to combine class-leading efficiency, performance, and value to create aesthetically pleasing retail interiors.



SloanLED Vista

Edge lit LED flat panel luminaire

SloanLED Vista is designed to replace fluorescent fixtures with a fresh, modern look in commercial, retail, and business environments, and features suspension and surface mounting options for easy, secure installation in a wide range of applications. The smooth light output, quality construction, dimming options, and superior efficacy make SloanLED Vista a bright choice.

- Maximum efficacy and minimum glare
- Suspension and surface mounting for convenient installation
- Superior heat dissipation
- Impact resistant PMMA light guide for lasting quality

Battery Backup



Surface Mount Box



Suspension Kit



600 × 600 mm
625 × 625 mm

600 × 1200 mm

300 × 1200 mm

SloanLED Vista Accessories

8 W Battery backup

AXEMB1-8W-CE

1.5 m cord and Wieland plug

AXWCP-15-CE

Surface Mount Box

AXSMT-6060-WH (600 × 600 mm)

AXSMT-6262-WH (625 × 625 mm)

AXSMT-3012-WH (300 × 1200 mm)

AXSMT-6012-WH (600 × 1200 mm)

Suspension Kit

AXSUS-4WA (300 × 1200 mm)

AXSUS-4WB (600 × 600 mm, 625 × 625 mm, and 600 × 1200 mm)

* Based on LED component manufacturer data.

	300 × 1200 mm	600 × 600 mm	625 × 625 mm	600 × 1200 mm
System power	40 W	40 W	40 W	50 W
Light output	5,300 Lumens	5,230 Lumens	5,230 Lumens	6,100 Lumens
Input voltage	220-230 VAC, 50-60 Hz			
System efficacy	129 lm/W			
Power factor	>0.9			
THD	<20%			
Beam angle	110°			
Color temperatures (CCT)	4000 K			
Color rendering (CRI)	80			
Ingress protection	IP40 (damp location rated)			
Life rating	60,000 hours (L ₇₀)*			

Ordering Information

Part number

Sample: FP10-3012-4040V

FP10- 40

Size	
Code	Desc.
3012-40	300 × 1200 mm (40 W)
6012-50	600 × 1200 mm (50 W)
6060-40	600 × 600 mm (40 W)
6262-40	625 × 625 mm (40 W)

Dimming	
Code	Desc.
X	Non-dimming
V	1-10 V dimming
D	DALI dimming

Area 51

LED die-cast UFO high bay LCG-UFO

The Area 51 high bay fixture is designed for the high-performance lighting of warehouse, manufacturing, and indoor and outdoor area lighting. The weatherproof design allows it to be used as an outdoor catenary light fixture supported by cables.

- Die-cast high-performance magnesium body is more lightweight and runs cooler than aluminum
- Three lumen outputs from 15,000 lm to 28,000 lm to meet the requirements of most applications
- Spun aluminum shade option can be used to guard against glare in lower height installations
- 1-10 V dimming driver is standard
- Optional occupancy sensor available



System power	100 W	150 W	200 W
Input voltage	120-277 VAC and 200-480 VAC*		
System efficacy	150 lm/W	140 lm/W	140 lm/W
Power factor	>0.95		
Light output	15,000 Lumens	21,000 Lumens	28,000 Lumens
Color temperatures (CCT)	4000 K, 5000 K		
Color rendering (CRI)	>70		
Dimming	1-10 VDC control on power supply		
Ingress protection	IP65		
UL location rating	Suitable for wet locations		
Life rating	>50,000 hours (L ₇₀)		
Finish	Black and White* polyester powder coat		

Area 51 Accessories

Shade accessory†

LCG-UFO-AL

Ordering Information

Part number

Example: LCG-UFO-150W-U-40K-BK-D1

LCG-UFO- - - - -D1

Wattage		Voltage		Kelvin temperature		Finish	
Code	Desc.	Code	Desc.	Code	Desc.	Code	Desc.
100W	100 W	U	120-277 VAC	40K	4000 K	BK	Black
150W	150 W	H	200-480 VAC*	50K	5000 K	WT	White*
200W	200 W						

* Available by special order, please contact SloanLED for lead times.

† Shade fits 100 W unit only.

Skyline

Linear vapor tight LCG-2T & LCG-4T

Skyline linear vapor tight fixtures are designed to replace linear fluorescent lighting or for new construction where ceiling or pendant mounting in a weatherproof environment is required.

- Tri-proof LED fixture for IP65 waterproof, dust, corrosion, and pressure-proof
- Pendant and surface mounting for convenient installation
- 1200 mm fixture can be daisy-chained end-to-end, up to 15 fixtures



	600 mm	1200 mm	
System power	20 W	40 W	50 W
Input voltage	100-277 VAC, 50-60 Hz; MS option=180-264 VAC, 50-60 Hz		
Lumens	2,600	5,200	6,500
Color temperatures (CCT)	3000 K, 4000 K, 5000 K		
Color rendering (CRI)	80		
Beam angle	120°		
Ingress protection	IP65		
Dimming	0-10 V and PWM/Triac dimming		
Finish	Frame: Clear, anodized aluminum End caps: White		

Ordering Information

Part number

Example: LCG-4T-40W-U-40K-DC-EM

LCG- - -U- -DC-

Body size		Wattage		Kelvin temp		Options	
Code	Desc.	Code	Desc.	Code	Desc.	Code	Desc.
2T	600 mm	20W	20 W	30K	3000 K	(blank)	None/Non-dimming
4T	1200 mm	40W	40 W	40K	4000 K	EM	30% Emergency battery
		50W	50 W	50K	5000 K	D1	0-10 V dimmable
						MS	Motion sensor

RD Series

Recessed downlights

The SloanLED® RD Series of LED downlights offer exceptional performance and quality for spot, task, and wall washing in retail and commercial applications.

- Long life LED reduces maintenance costs
- Sealed lens keeps bugs out
- Easy to install spring clip mounting allows for quick retrofits or remodels
- Energy savings of more than 60% over CFL



	Adjustable (RDA)	Small (RDS)	Large (RDL)
System power	21 W	15 W	21 W
Input voltage	220-240 VAC		
Light output	2,037 Lumens	1,410 Lumens	2,000 Lumens
Color temperatures (CCT)	4000 K		
Color rendering (CRI)	>80		
Beam angle	20°	90°	
Ingress protection	IP20		
Life rating	>50,000 hours (L ₇₀)†		
Mounting	Spring clamps		

Ordering Information

Part number

Example: 701977-4SDTW1

701977-4 1

Model	
Code	Desc.
SDTW	Small
LDTW	Large
ACCW	Adjustable

Refrigerated Display

Cold Series™ refrigerated display LED lighting systems use cutting edge LED technology to combine efficiency, performance, and value for state of the art merchandising.



Cold Deck FIT

LED lighting system for multi-deck merchandisers

Cold Deck FIT lighting system is designed to optimize visual appeal of produce, meat, and dairy cases (multi-deck merchandisers). Extends shelf life of perishables through reduced heat output.



- Illuminates product facings with crisp, uniform light dispersion
- Optimize visual appeal and color accuracy of meat products with new "Prime" meat-tuned LED chip
- Waterproof (IP68) for produce "wet zones" or spray down maintenance of display cases
- **Up to 77% energy savings compared with typical fluorescent fixtures**

Cold Door 3

LED lighting system for cooler doors

Cold Door 3 LED lighting system provides crisp, uniform illumination across doors for walk-in coolers/freezers, and remote glass door reach-ins. Highly adaptable for varying case styles and shelf depths, this complete suite of options includes 4000 K and 5000 K color temperatures, and comes in lengths for 1.2, 1.5, 1.8, and 2.1-m doors.



- Delivers bright, uniform light, vibrant color, and reduced glare to product facings at depths as shallow as 50 mm (2")
- High efficacy at 109 lm/W powers up to 5-door frames on a single power supply
- Optional wing accessories conceal light source from consumers
- **Up to 85% energy savings compared with typical fluorescent fixtures**

Cold Deck FIT			0.3 m (1')	0.9 m (3')	1.2 m (4')
Input voltage			100-240 VAC, 50-60 Hz		
Output voltage			24 VDC, Class 2 low voltage		
Fixture power	Canopy		2.3 W	9.0 W	11.3 W
	Shelf		1.1 W	3.4 W	4.5 W
Illuminance	2700 K	Canopy	241	963	1204
		Shelf	137	410	547
	3500 K	Canopy	266	1063	1329
		Shelf	153	797	611
	4000 K	Canopy	276	1104	1380
		Shelf	158	472	630
	Prime	Canopy	N/A	N/A	630
		Shelf			313
Color temperatures (CCT)			2700 K, 3500 K, 4000 K, Prime (meat-tuned)*		
Color rendering (CRI)			>80		
Dimming			Optional Motion Sensing†		
Ingress protection			IP68 (highest dust and water protection)		
Life rating			>60,000 hours (L ₉₀) [§]		
Body color			Smooth white		

Cold Deck FIT Accessories⁴

Stand-off clip	401091
5 clip spanner wrenches	401368-5
Small terminal block	401350
Large terminal block	401351

Cold Deck FIT Dimming

Dimming controller	701890-PWR
Occupancy sensor, Standard⁴	400661
Occupancy sensor, Wide⁴	400964

Ordering Information

Part number

Example: 701940-4WC4F1

701940---F1

Kelvin temperature		Type		Length	
Code	Desc.	Code	Desc.	Code	Desc.
MW	Prime (meat-tuned)*	C	Canopy	1	0.3-m (1-ft)
2W	2700 K	S	Shelf	3	0.9-m (3-ft)
3W	3500 K			4	1.2-m (4-ft)
4W	4000 K				

Cold Door 3, Performance		1.2 m (4')	1.5 m (5')	1.8 m (6')	2.1 m (7')
Input voltage		100-240 VAC (to power supply)			
Fixture voltage		24 VDC			
Total lumens⁴	Center	1280	1547	1813	1947
	End	880	1063	1247	1338
System power	Center	12.4	15.5	18.1	19.3
	End	8.1	10.5	11.6	12.6
Calculated system efficacy	Center	103	100	100	101
	End	109	102	108	106
Lumens/ft (nominal)	Center	320			
	End	220			
Color temperatures (CCT)		3500 K, 4000 K, 5000 K			
Color rendering (CRI)		>80			
Life rating		>60,000 hours (L ₉₀) at maximum operating conditions⁵			
Dimming		Optional Motion Sensing†			
Body color		Black			

Cold Door 3 Accessories⁴	Two pack	Bulk
Snap-in clip⁶	401943-2	401943-24
1.2-m (4') Invisibility Light Guard⁴	402074-46-2	402074-46-12
1.5-m (5') Invisibility Light Guard⁴	402074-56-2	402074-56-12
1.8-m (6') Invisibility Light Guard⁴	402074-66-2	402074-66-12
2.1 m (7') Invisibility Light Guard⁴	402074-71-2	402074-71-12
1.2-m (4') End Reflector⁴	402074-46-EC-2	402074-46-EC-12
1.5-m (5') End Reflector⁴	402074-56-EC-2	402074-56-EC-12
1.8-m (6') End Reflector⁴	402074-66-EC-2	402074-66-EC-12
2.1 m (7') End Reflector⁴	402074-71-EC-2	402074-71-EC-12

Cold Door 3 Dimming

Dimming controller⁹	701890-PWR
Occupancy sensor, Standard	400661
Occupancy sensor, Wide⁴	400964

* Prime available in 1.2 m (4') length only.
† Based on LED component manufacturer data.
‡ See Cold Series Dimming Control data sheet.
§ 6 Six (6) clips included with each canopy light to space by 13 mm (1/2") or angle by 10°. Additional clips may be used to increase spacing and/or angle (see install guide). Additional clips may also be used to angle shelf lights if desired. Screws not included for fastening to non-magnetic shelves.
¶ May require an L-bracket (not included) for mounting.
Δ Alternative for 400661. Cat 5 cabling to the sensor not included.
◇ Calculated from LM80 data.
¥ Bulk package includes 24 clips
⌘ Bulk package includes 12 pieces.
Ⓢ Also functions as a power controller, replacing P/N 701929 when dimming is specified. Use with 701895-24W power supply.

Notes

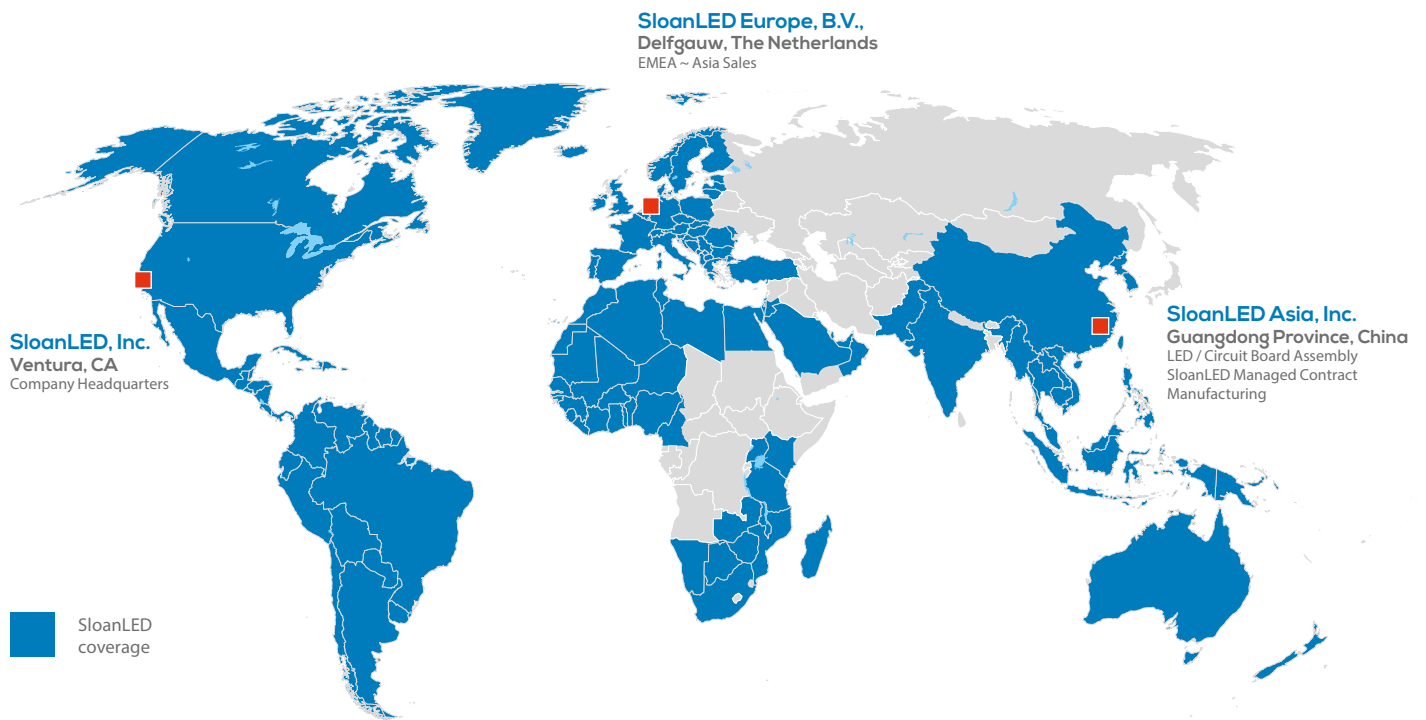
[illegible]

Notes

[illegible]

No matter where you are. **We've got you covered.**

From Alaska to Australia, with 150+ employees, and the best global coverage in the industry, we've got you covered.



SloanLED Headquarters
805.676.3200 • info@SloanLED.com

SloanLED Europe b.v.
+31 88 12 44 900 • Europe@SloanLED.com



SloanLED.com

Trade names, marks and logos shown are the property of their respective owners. Specifications may change without notice.

© 2019 SloanLED Rev B 2019-08-29

