

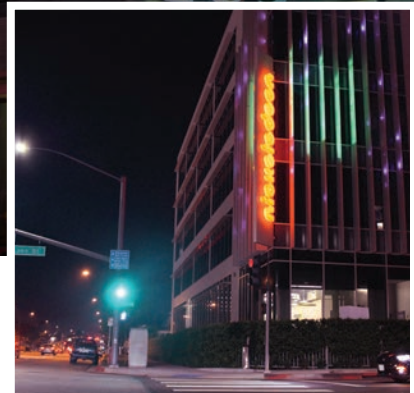


We Brighten Your Brands

We Brighten Your Brands

What does that mean? To SloanLED® it means our lights will bring your signs to life. Whether you're looking to illuminate a pylon, wayfinding system, or a 10 ft. tall, fabric-faced lightbox, we have the LED lighting solution to brighten your brand.

Channel Letter





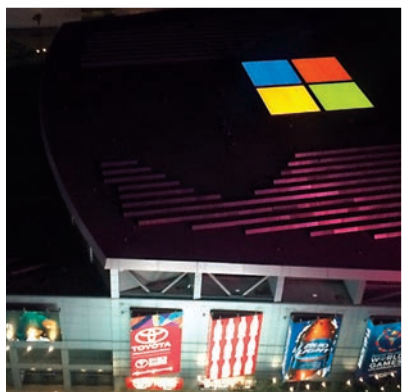
Founded in 1957 to design and develop high-reliability lighting products, SloanLED quickly became a pioneer in LED technology. Our founder, Charles Sloan, was driven by two simple principles: employ the latest

technologies to develop quality lighting products and take really good care of the customers. SloanLED continues to deliver on those principles as we brighten your brands, night and day.

Sign Cabinet/Box

Border Tubing & Accent

Fluorescent Alternative



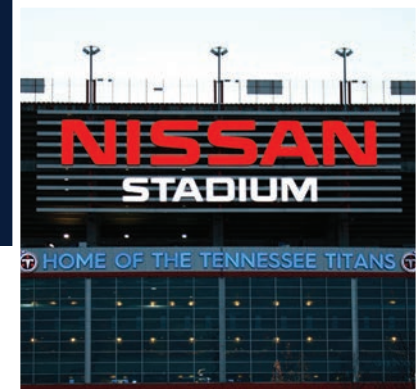
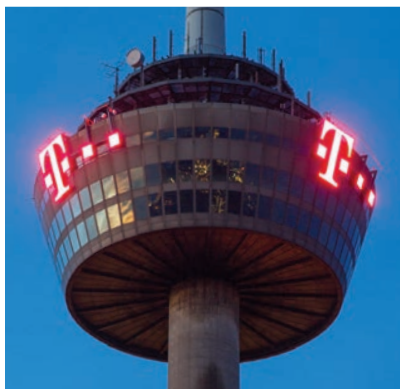
From A to Z and every number,
character, and symbol you need,
SloanLED channel letter
lighting is best in class.

Channel Letter



CHANNEL LETTER

- White, face lit signage
SloanLED Prism, SloanLED Prism Enlighten, and VL Plus families
- Color, face lit signage
SloanLED Prism and VL Plus families
- Block acrylic signage
BendLUX and SloanLED Prism Nano



New or retrofit.

Acrylic or fabric.

Single or double-sided.

SloanLED cabinet/box lighting
is the industry standard.

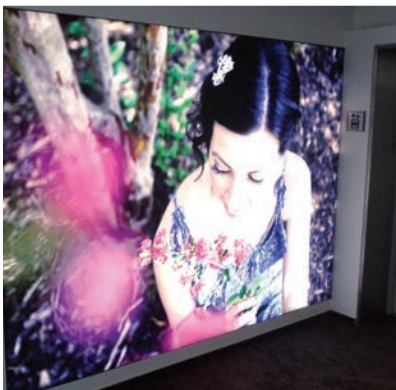
Its efficiency, evenness,
and ease of installation
can't be beat.

Sign Cabinet/Box



SIGN CABINET/BOX

- Single-sided boxes
SloanLED Prism, SloanLED Prism Enlighten, and VL Plus families
- Single or double-sided boxes
SloanLED PrismBEAM, PosterBOX and SignBOX families
- Shallow or narrow boxes
PosterBOX family



SloanLED's border tubing and accent lighting comes in an array of brilliant colors that highlight your brand and deliver the lasting impact it deserves.

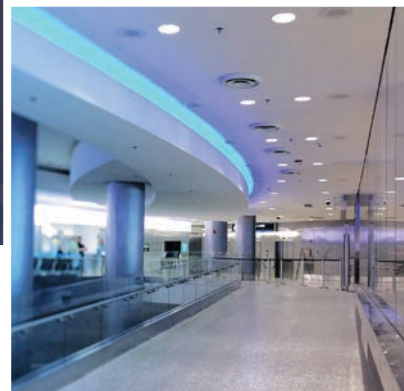
Border Tubing & Accent





BORDER TUBING & ACCENT

- Neon-inspired tubing
ColorLINE
- Flexible LED tubing
FlexiBRITE
- Large-profile tubing
LEDStripe




Upgrading your cove,
awning, and wall wash
lighting to a SloanLED
fluorescent alternative is the
ideal solution for saving energy
and maintenance costs.

Fluorescent Alternative

FLUORESCENT ALTERNATIVE

- Standard linear outdoor/indoor lighting
HighLINER 2
- Low-profile linear outdoor/indoor lighting
SlimLINER





Rugged, reliable, and rigorously tested:
The SloanLED power supply line-up.
Our 12 and 24 VDC versions are
engineered specifically for the sign
industry in dry, damp, and wet locations.

Power Supplies

POWER SUPPLIES

- 12 VDC Power Supplies
20 W, 60 W, 60 W for wet locations, and 120 W
- 24 VDC Power Supply
100 W and 40 W

24 VDC 100 W

60C1 60 W

Compact 12/25 W

Compact 24/40 W

MOD277 60 W

MODW(E) 60 W

Self-Contained 20 W

- *Auto-resetting – No fuses to replace or circuit breaker to reset – Short circuit protection automatically resets when short condition is corrected*
- *Simple secondary hook-ups – No minimum load or load balancing required*

60W1 60 W

60W2 60 W

120D1 120 W

- *Auto-resetting – No fuses to replace or circuit breaker to reset – Short circuit and over-current protection circuit automatically resets when condition is corrected*
- *Rugged and compact*

THE COMPLETE

SOLUTION

A SPECTRUM OF

POSSIBILITIES

SloanLED Prism Family

LEDs per module	SloanLED Prism, Colors & HO	3
	Mini	1
Protection class	IP66 & IP68 ¹	



Whites

Model	Modules per meter (foot)	Color temperature	Lumens per module (nominal)	Efficacy	Optimal can depth
SloanLED Prism	3.3/m (1/ft)	6500 K	124	111 lm/W	75-200 mm (3-8")
	4.9/m (1.5/ft)	7100 K, 6500 K, 5700 K, 5000 K			
		4000 K			
		3000 K			
Mini	7.4/m (2.25/ft)	6500 K	44	95 lm/W	50-100 mm (2-4")
HO	2.6/m (0.8/ft)	6500 K	180	107 lm/W	127-305 mm (5-12")
		5000 K			

Colors

Color	Nominal wavelength	Modules per meter (foot)	Lumens per module (nominal)	Efficacy	Optimal can depth
Red	628	6.6/m (2/ft)	24	33.5 lm/W	75-200 mm (3-8")
Orange	606	4.9/m (1.5/ft)	11	15 lm/W	
Yellow	589		60	83 lm/W	
Green	527		18	25 lm/W	
Blue	471				

¹ Prism IP68 test parameters are 1.3 m submersion for 30 minutes. Do not mount in submerged application or where module will be directly exposed to prolonged flowing or dripping water.

SloanLED NEW Prism Enlighten

- Low power for lower operating costs, up-front labor, and material expenses, and lower environmental impact
- Longer lifespan – 3X the life of a typical LED (150,000+ hours)
- Industry leading 9-year part/5-year limited labor warranty



Color temperatures	7100 K, 6500 K, 5700 K, 5000 K, 4000 K, 3000 K	
Efficacy	7100 K, 6500 K, 5700 K, 5000 K	120 lm/W
	4000 K	113 lm/W
	3000 K	107 lm/W
	Lumens per module (nominal)	7100 K, 6500 K, 5700 K, 5000 K
Power capacity	4000 K	85
	3000 K	80
	72 modules (14.6 m / 48.0 ft) per SloanLED 60 W 12 VDC power supply	

SloanLED Prism Nano NEW

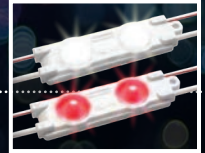
- Elliptical optics for bright, uniform illumination in routed acrylic block letter, shallow channel letter, and backlit halo letter applications as shallow as 25 mm (1")
- Quickly and easily conforms to any shape for easy flat bends and connections without the need for soldering or PCB cutting



Optimal can depth	25-75 mm (1-3")	
Color temperatures	7200 K, 6500 K, 5000 K, 4000 K, 3000 K	
Efficacy	7200 K, 6500 K, 5000 K, 4000 K	106 lm/W
	3000 K	83 lm/W

VL Plus 3 NEW

Viewing angle	160°	
Efficacy	White (6500 K)	103 lm/W
	Red	32 lm/W
Power capacity per 60 W 12 VDC power supply	White (6500 K)	52 modules
	Red	86 modules
Modules per m (ft)	4.6 (1.4)	
Lumens per module	White (6500 K)	107
	Red	20



PosterBOX 3

Viewing angle	12.2° × 44.8°	
Efficacy	Short	118 lm/W
	Long	121 lm/W
Color temperature	6500 K	
Lumens per assembly	Short	850
	Long	1700
Power capacity ¹	Per 100 W 24 VDC power supply:	
	Short	6 modules
	Long	6 modules



¹ Any combination thereof not to exceed power rating of power supply.

PosterBOX

Light throw	1.2 m (4 ft)	
Efficacy	82 lm/W	
Color temperatures	6500 K, 5000 K	
Lumens per module	550	
Power capacity	8 modules per 60 W 12 VDC power supply	



SignBOX 3 NEW

Optimal light throw	5-12 in (125-300 mm) from face	
Efficacy	156 lm/W	
Color temperatures	6500 K, 5000 K	
Lumens per module	Strapped single-sided/ Module	300
	Strapped double-sided	600
Power capacity	Per 100 W 24 VDC power supply:	
	Strapped single-sided/ Module	48 modules
	Strapped double-sided	24 modules



PosterBOX Slim 2

Viewing angle	15° × 43°	
Efficacy	94 lm/W	
Color temperatures	6500 K, 5000 K	
Lumens per module	170	
Power capacity	30 modules per 60 W 12 VDC power supply	



SloanLED **NEW** PrismBEAM

Color temperature 6500 K
Cabinet depth 203 mm (8 in) optimum
Protection class IP66 & IP68¹



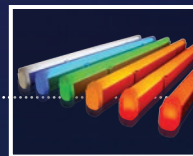
Size (nominal)	Modules per assembly		Lumens per assembly	
	Single-sided	Double-sided	Single-sided	Double-sided
0.46 m (18 in)	2	4	360	720
0.61 m (24 in)	3	6	540	1080
0.76 m (30 in)	3	6	540	1080
0.91 m (36 in)	4	8	720	1440
1.07 m (42 in)	5	10	900	1800
1.22 m (48 in)	6	12	1080	2160
1.52 m (60 in)	7	14	1260	2520
1.63 m (64 in)	8	16	1440	2880
1.83 m (72 in)	9	18	1620	3240
2.13 m (84 in)	10	20	1800	3600
2.44 m (96 in)	12	24	2160	4320
2.74 m (108 in)	13	26	2340	4680
2.97 m (117 in)	14	28	2520	5040
3.05 m (120 in)	14	28	2520	5040

¹ Prism IP68 test parameters are 1.3 m submersion for 30 minutes. Do not mount in submerged application or where module will be directly exposed to prolonged flowing or dripping water.

BORDER TUBING & ACCENT

ColorLINE **NEW COLORS**

Factory bends 245 mm (9.75 in) radius
In-field bends Radial bend 5.8 m (19 ft)
Flat bend 1.8 m (6 ft)
Power per meter (foot) 5.0 W (2.28 W)



Colors Standard Red, Orange, Yellow, Green, Blue, White (6500 K), Warm White (3200 K)
NEW Classic Ruby Red, Citrus Orange, Noviol Gold, Emerald Green, Bromo Blue
Power capacity 7 m (24 ft) per 60 W 12 VDC power supply

FlexiBRITE **NEW COLORS**

In-field bends Radial bend 305 mm (12 in)
Flat bend 25 mm (1 in)
Power per meter (foot) 9.2 W (2.8 W)

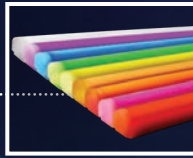


Colors **NEW** Classic Ruby Red, Citrus Orange, Noviol Gold, Emerald Green, Bromo Blue, Snow White
Power capacity 6 m (20 ft) per 60 W 12 VDC power supply

LEDStripe

NEW COLORS

Factory bends	305 mm (12 in) radius
In-field bends	Radial bend 4.25 m (14 ft)
	Flat bend 5.8 m (19 ft)
Power per meter (foot)	5.0 W (1.5 W)
Colors	Red, Pink, Orange, Amber, True Yellow, Green, Blue, Purple, White (6500 K), Lemon Yellow
Power capacity	18.3 m (60 ft) per 100 W 24 VDC power supply



FLUORESCENT ALTERNATIVE

SlimLINER

Lumens per fixture	5000 K	970
	3500 K	825
Color temperatures	5000 K, 3500 K	
Color rendering (CRI)	5000 K	70 (nominal)
	3500 K	82 (nominal)
Efficacy	5000 K	108 lm/W
	3500 K	92 lm/W
Power capacity	6 units per 60 W 12 VDC power supply	



HighLINER 2

Input power	System ¹	Luminaire ²	
	1.2 m (4')	17 W	14.4 W
	0.3 m (1')	4 W	3.6 W
Light output ³ (lumens)	5000 K	3500 K	
	1.2 m (4')	1792	1582
	0.3 m (1')	448	395
Color temperatures	5000 K, 3500 K		
Color rendering (CRI)	5000 K	80	
	3500 K	>70	
Power capacity	7 m (24 ft) per 100 W 24 VDC power supply		



The SPECIFICS

1 For calculating maximum number of luminaires connected to a power supply, use LUMINAIRE INPUT POWER.
 2 For calculating maximum number of luminaires connected to branch circuit, use SYSTEM INPUT POWER.
 3 Tolerance range for optical and electrical data: ±15%.

For part numbers and detailed specifications, visit SloanLED.com

12 VDC Power Supplies

Compatible with SloanLED 12 VDC products

Model	Nominal input voltage	Max. input current	Power output	Location rating
Self-contained 20 W	100-240 VAC, 50-60 Hz	0.55 A	20 W @ 12 VDC, Class 2 output ¹	Dry and damp locations
Compact 12/25 W ³	100-277 VAC, 50-60 Hz	0.40 A	25 W @ 12 VDC, Class 2 output ¹	Dry and damp locations
60C1 60 W	100-277 VAC, 50-60 Hz	0.80 A	60 W @ 12 VDC, Class 2 output ¹	Dry and damp locations
60W1 60 W	100-240 VAC, 50-60 Hz	0.85 A	60 W @ 12 VDC, Class 2 output ¹	Dry, damp, and wet locations
60W2 60 W	100-277 VAC, 50-60 Hz	0.80 A	60 W @ 12 VDC, Class 2 output ¹	Dry, damp, and wet locations
MOD277 60 W	277-347 VAC, 50-60 Hz	0.50 A	60 W @ 12 VDC, Class 2 output ¹	Dry, damp, and wet locations
MODW(E) ² 60 W	100-240 VAC, 50-60 Hz	1.00 A	60 W @ 12 VDC, Class 2 output ¹	Dry, damp, and wet locations
120D1 120 W	100-277 VAC, 50-60 Hz	1.70 A	120 W @ 12 VDC, two (2) Class 2 outputs ¹	Dry and damp locations

24 VDC Power Supplies

Compatible with SloanLED 24 VDC products

Model	Nominal input voltage	Max. input current	Power output	Location rating
24 VDC 100 W	100-240 VAC, 50-60 Hz	2.0 A	100 W @ 24 VDC, Class 2 output ¹	Dry, damp, and wet locations
Compact 24/40 W ³	100-277 VAC, 50-60 Hz	0.6 A	40 W @ 24 VDC, Class 2 output ¹	Dry and damp locations

¹ North America only.

² 3rd party independent testing: Approved thermal shock, approved underwater thermal cycling.

³ For sign applications, only certified for use outside of U.S. and Canada.



Trade names, marks and logos shown are the property of their respective owners. Specifications may change without notice.

SloanLED Headquarters SloanLED Europe
888.747.4LED +31 88 12 44 900

SloanLED.com

© 2018 SloanLED Rev Q Web 2018-06-20

