

PML3 Paladin

LED pole mount family
for area lighting



We Brighten
Your Brands.

Dazzling design and illumination.

PML3 Paladin is designed to replace up to 400 W HID fixtures mounted on poles and walls in parking areas, and features Type III and Type V distribution patterns, superior efficacy, and a brilliant self-contained fixture design – allowing all light engine and power supply components to be housed inside the body, for fast, easy installation and maintenance.



- Increases visibility at entrances, in the parking area, and along the property perimeter
- Complete family of options, providing the ideal solution for your area lighting needs, regardless of project scale
- 5-year limited warranty
- **Saves up to 80% energy compared with typical HID fixtures**



Features

Benefits

Available in full family of wattages/output, from 30 to 200 W	Complete suite of options, providing the ideal solution for your area lighting needs, regardless of project scale
Optics in Type III and Type V distribution patterns	Optimal distribution for perimeter and center lot applications at any pole height
Superior efficacy up to 122 lm/W	Saves up to 80% energy compared with typical HID fixtures
IP66 weather proof and IK09 impact ratings	Superior weather and impact proof durability for years of reliable service
Durable die-cast aluminum construction with adjustable slipfitter	Superior materials and slipfitter construction allow incremental adjustments 15° up and down from vertical or horizontal mounting
Power disconnect plug on input cable easily unplugs body from base	Fixture body can be safely and easily removed from base for ease of serviceability
Two-piece, tool-less fixture design allows lightweight base to be wired and mounted separately from body	Fast, easy, one-person installation and maintenance
Available with integrated photocell socket and shorting cap	Turns fixtures on/off without the use of a site control circuit

For more information on our Outdoor Area collection of products, visit SloanLED.com.

Increased comfort, security, and safety.

PML3 Paladin does more than just illuminate outdoor areas, it creates a safe, inviting area for visitors with an increased sense of security, and enhances safety by helping security cameras to operate more efficiently with diminished shadows and higher visibility, for enhanced CCTV through better facial recognition.

Maximum versatility.

Outdoor lighting means different things to different people, and PML3 Paladin offers a complete suite of options, providing the ideal solution for your area lighting needs, regardless of project scale:

- 30 to 200 W wattages/output
- Large, Medium and Small versions
- Silver and White body colors
- Type III and Type V photometric options to meet your precise requirements

There's no substitute for quality.

Other LED manufacturers use cheaper components and maximize the potential brightness of their products at the expense of longevity; overdriving the LEDs for instant gratification while sacrificing sustainability and endurance. SloanLED uses the highest caliber components in order to offer you a superior product with the longest lifespan, maximum reliability, and the lowest maintenance requirements, for top performance, and incredible ROI.



PML3 Paladin

Specifications

Electrical

Input voltage 100-240 VAC, 50-60 Hz

Size	System power	System efficacy	Inrush current
200 W	212.3 W	99.3 lm/W	30 A
160 W	153.5 W	107.3 lm/W	65 A
120 W	116.9 W	105.6 lm/W	60 A
90 W	89.5 W	103.7 lm/W	60 A
60 W	55 W	110.3 lm/W	55 A
40 W	37 W	120.0 lm/W	50 A
30 W	32 W	122.0 lm/W	50 A

Lighting

Size	Light output (nominal)	Pole height & Lux correlation						
		3.6 m (12')	4.5 m (15')	6.0 m (20')	7.6 m (25')	9.0 m (30')	10.5 m (35')	12 m (40')
200 W	21,074 Lumens	414	271	156	105	70	66	61
160 W	16,464 Lumens	330	212	123	82	55	51	46
120 W	12,347 Lumens	253	165	97	64	43	47	41
90 W	9,283 Lumens	195	128	74	49	33	41	32
60 W	6,064 Lumens	93	70	49	34	20	23	15
40 W	4,443 Lumens	68	51	36	25	15	20	14
30 W	3,901 Lumens	59	44	31	22	13	13	9

Light distribution Type III and Type V

Color temperature (CCT) 5000 K

Color rendering (CRI) >75

Performance

Ingress protection IP66

IK Code IK09

Operating temperature -35° C to 50° C

Life rating 70,000 hours (L₇₀)¹

1 Based on LED component manufacturer data.



Construction

Body Die cast aluminum

Body colors Silver and White

Dimensions L x W x H **Large** 878 mm x 402 mm x 182 mm (34.5" x 15.8" x 7.15")

Medium 758 mm x 332 mm x 167 mm (29.8" x 13.1" x 6.6")

Small 628 mm x 266 mm x 160 mm (24.7" x 10.5" x 6.3")

Weight **Large** 15.6 kg

Medium 10.5 kg

Small 10.1 kg

Mounting

Adjustable slipfitter Die cast aluminum fitter adjusts incrementally 15° up from horizontal and 15° down from horizontal

Pole top **Large** Fitter mates to nominal Ø 76 mm (3.0") round pole

Medium, Small Fitter mates to nominal Ø 60 mm (2.4") round pole

Documentation

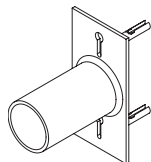
Warranty 5-year limited

Agency listings cULus, CE, ENEC

Files available LM-79, LM-80, IES

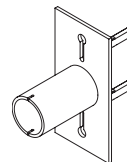


Accessories



76 mm Tenon Kit

Square poles and surface mount.
601100-SL (Silver)
601100-WH (White)



60 mm Tenon Kit

Square poles
601102-CC-SL (Silver)
601102-CC-WH (White)
Round poles
601017-CC-SL (Silver)
601017-CC-WH (White)



20 kVA Surge Protector

410186



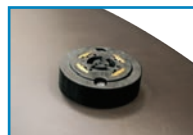
Universal Photocell

401762



Photocell Socket

601053



Photocell Socket option²

Includes shorting cap

Ordering information

Part number

Example: PML3-90M-53-WH-CE

PML3 - [] - 5 [] - [] - CE - []

Power/Size

Code	Desc.
200L	200 W, Large
160L	160 W, Large
120L	120 W, Large
90M	90 W, Medium
60S	60 W, Small
40S	40 W, Small
30S	30 W, Small

Light distribution

Code	Desc.
5	Type V
3	Type III

Body color

Code	Desc.
SL	Silver
WH	White

Photocell Socket

Code	Desc.
PS	Photocell Socket
(Blank)	No Photocell Socket

2 installer must purchase photocell separately, for specific application.

SloanLED Headquarters
805.676.3200 • info@SloanLED.com

SloanLED Europe b.v.
+31 88 12 44 900 • Europe@SloanLED.com

SloanLED.com

