

HighLINER 2

Outdoor and indoor linear lighting



We Brighten
Your Brands.



SloanLED[®]
Leaders in LED Technology

We set the bar high.

Designed to replace fluorescent lighting, HighLINER 2 is a versatile product for soffits, awnings, and wall washes, that offers natural, white, outdoor and indoor linear illumination for both new construction and retrofit projects, while saving energy, and reducing maintenance costs, for a brilliant bottom line.

Sealed to lock out moisture for even the most challenging applications

Top tier LED offers industry leading performance and efficiency with 100,000 hours L₇₀ life

Wire Nut Housing accessory (P/N 400860) snaps onto the ends of HighLINER 2 to cover wire connections and/or bridge distances between lights

Co-extruded impact modified acrylic housing diffuses light and protects luminaire to provide long operating life

Easily daisy chain up to six 1.2 m (4 ft) luminaires using lead wires located on both sides of the fixture

- Easy installation for both new construction and retrofit
- Improves walkway and aisle visibility and building aesthetics
- Fits easily into new or existing interior and exterior spaces
- Saves up to 64% energy compared with typical fluorescent fixtures
- Illuminates soffits evenly
- Lightweight fixture



A beacon of change.

Fluorescent alternative LED lighting from SloanLED is a brilliant, energy efficient, solution for illuminating cove, awning, and wall wash applications or highlighting non-illuminated signs.

Product	Description
HighLINER 2	Natural white illumination for soffits, awnings, and wall washes.
SlimLINER	Natural white illumination for awnings, vinyl canopies, and accents in narrow applications.

For more information on our Fluorescent Alternative collection of products, visit SloanLED.com.

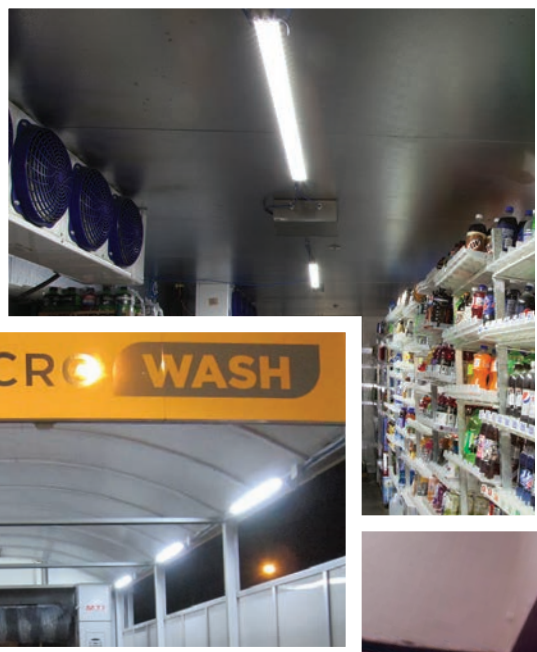
We're on a power trip.

Constant Current Technology (CCT) is at the heart of SloanLED's product offering, and forms the backbone of SloanLED channel letter products. We introduced CCT to the industry to maintain consistent current levels, eliminating the line loss and voltage drop issues common in many LED lighting systems. CCT provides uniform light output throughout the entire installation, while also preventing damage from overdriving of the LEDs.

Multiple needs. One simple solution.

HighLINER 2 is a unique product that walks the line between sign and indoor/outdoor ambient lighting. Easy installation, high energy savings, and low maintenance, make it perfect for:

- Restaurants
- C-stores
- Parking structures
- Stock rooms
- Coolers
- Car washes



There's no substitute for quality.

Other LED manufacturers use cheaper components and maximize the potential brightness of their products at the expense of longevity; overdriving the LEDs for instant gratification while sacrificing sustainability and endurance. SloanLED uses the highest caliber components in order to offer you a superior product with the longest lifespan.

HighLINER 2

Specifications

Part number	1.2 m (4').....5000 K	701912-C1I75
	1.2 m (4').....3500 K	701912-35C2I75
	0.3 m (1').....5000 K	701912-L1C1I75
	0.3 m (1').....3500 K	701912-L135C2I75

Dimensions L × W × H	1.2 m (4').....1160 mm × 60 mm × 28 mm	
	(45.70 in × 2.38 in × 1.12 in)	
0.3 m (1').....304 mm × 60 mm × 28 mm		
(11.98 in × 2.38 in × 1.12 in)		

Electrical

Input voltage 24 VDC

Input power	System ¹	Luminaire ²
	1.2 m (4').....17 W	14.4 W
	0.3 m (1').....4 W	3.6 W

System Efficacy	5000 K.....105 lm/W
	3500 K.....93 lm/W

Lighting

Light output (lumens)³	5000 K	3500 K
	1.2 m (4').....1792.....	1582
	0.3 m (1').....448	395

Light distribution..... Linear

Color temperatures 5000 K, 3500 K

Color rendering (CRI) 5000 K.....80
3500 K.....>70

Performance

Ingress protection IP66 & IP68⁴

UL location rating..... Dry, damp, and wet locations

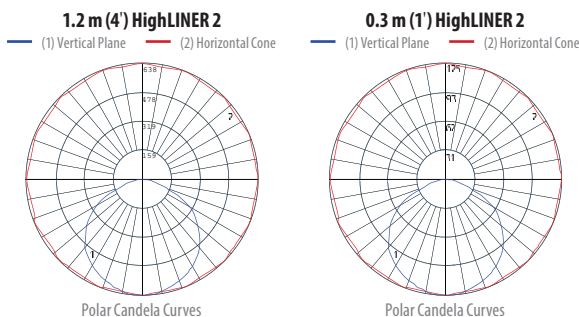
Operating temperature -25° C to 50° C

Life rating 100,000 hours (L₇₀)⁵

Dimming Optional Motion Sensing
(see Cold Series Dimming Control data sheet)

Construction

Photometrics



SloanLED Headquarters
805.676.3200 • info@SloanLED.com

SloanLED Europe b.v.
+31 88 12 44 900 • Europe@SloanLED.com

SloanLED.com



Housing Acrylic, impact modified with UV stabilization

Body color White

Mounting

Mounting	1.2 m (4').....Mounting clips (3 incl.),
	Wire nut housing (2 incl.)
0.3 m (1').....Mounting clips (2 incl.),	
Wire nut housing (2 incl.)	

Documentation

Warranty..... 5-year limited

Agency listings..... UL, NSF/ANSI 2, ETL, CE,
DesignLights Consortium® (DLC), RoHS

Files available LM-79, LM-80, IES



Power Supplies⁶

Item description	Part number
100 W	701895-24C

Dimming

Item description	Part number
Dimming Controller	701890-PWR
Occupancy Sensor, Standard ⁷	400661
Occupancy Sensor, Wide Angle ⁸	400964

- For calculating the maximum number of luminaires that can be connected to the branch circuit, use the SYSTEM INPUT POWER.
- For calculating the maximum number of luminaires that can be connected to a power supply, use the LUMINAIRE INPUT POWER.
- Tolerance range for optical and electrical data: ±15%.
- IP66 & IP68 ratings provide protection for extreme outdoor and wet applications (e.g., car wash) or harsh weather exposure. Do not mount in a submerged application.
- Based on LED component manufacturer data.
- 1.2 m (4 ft): 6 units per SloanLED 100 W 24 VDC power supply. 0.3 m (1 ft): 24 units per SloanLED 100 W 24 VDC power supply.
- May require an L-bracket (not included) for mounting.
- Alternative for 400661. Cat 5 cabling to the sensor not included.

Power Supply Capacity

Item description (Part number)	Power output	HighLINER 2
24 VDC Power Supply [701895-24C]	100 W	7 m (24 ft)
Compact 24/40 Power Supply [410175]	40 W	3 m (10 ft)
Watts per meter/foot		11.8 W / 3.6 W

Accessories



Mounting Clip

400686
Three (3) included with 1.2 m (4 ft) assembly
Two (2) included with 0.3 m (1 ft) assembly



Wire Nut Housing

400860
Two (2) included with 1.2 m (4 ft) assembly
Two (2) included with 0.3 m (1 ft) assembly